



Curriculum Guide 2021



LONG BAY COLLEGE
Care, create, excel

CONTENTS

GENERAL INFORMATION **3**

SELECTING YOUR LEARNING PROGRAMME FOR 2021	3
PEOPLE TO SEE FOR SUBJECT ADVICE	3
NATIONAL CERTIFICATE OF EDUCATIONAL ACHIEVEMENT	3
UNIVERSITY ENTRANCE	4
CAREERS	6
GATEWAY	6
YEAR LEVEL PROGRAMMES IN 2021	6
STUDENTS WITH ADDITIONAL LEARNING NEEDS	8
ENGLISH FOR ACADEMIC PURPOSES	8
SCHOLARSHIP	9

COURSE DESCRIPTIONS **9**

COURSES AVAILABLE	10
BUSINESS	13
ENGLISH	18
HEALTH & PHYSICAL EDUCATION	22
GLOBAL STUDIES - LANGUAGES	26
GLOBAL STUDIES – ENGLISH FOR ACADEMIC PURPOSES	31
MATHEMATICS	33
PERFORMING ARTS	36
SCIENCE	41
SOCIAL SCIENCES	46
TECHNOLOGY	51
VISUAL ARTS	60
END OF DOCUMENT – CLICK TO RETURN TO CONTENTS	65

Click on a title above to be taken to that section

Version number	4.1
Last amended	10 August 2020

GENERAL INFORMATION

The information in this guide is designed to help you carefully choose your subjects for 2021. The courses you select are crucial for your future, so it is important that you think carefully about your course direction. The further you go in the senior school, the more difficult it becomes to change that direction. That is why the best advice is to keep as broad a range of subjects for as long as possible.

SELECTING YOUR LEARNING PROGRAMME FOR 2021

There are recommended pathways as prior experience of a subject is a strong indicator of future success. Note the progress of subjects from Year 11 through to Year 13 in the subject pathways. Some subjects are difficult to take up again if dropped early or may not go to Year 13.

Students will be selecting their options for 2021 in term 3 via the web portal. This will follow discussions with their Atawhai leader.

All students should consider the following for each course:

- ✓ Will I enjoy the course?
- ✓ Can I succeed at the subject?
- ✓ Where does it lead?

Senior students should also consider:

- ✓ What qualifications and future learning do my courses lead to
 - while at school?
 - once I've left?
- ✓ Does my learning programme help me meet the literacy and numeracy requirements
 - for NCEA?
 - For University Entrance?
- ✓ Do all my courses together give me enough credits or grades for the qualifications that I want?
- ✓ Do all my courses together make up a manageable workload for me?

PEOPLE TO SEE FOR SUBJECT ADVICE

People you can see for advice about your course selection here at school are your Atawhai leader, subject teachers and Deans. Mrs Thomas (KThomas@lbc.school.nz), our Careers Counsellor, has information on a huge variety of careers and tertiary courses. She is available on 477 9009 ext 839 and is happy to talk with parents. The Long Bay College Careers Centre website has useful information, links to relevant sites and is a good place to start – [Link to Careers Centre website](#).

Students studying English for Academic Purposes (EAP) should also seek advice from the Head of Global Studies, Mrs Laura Curwood (LCurwood@lbc.school.nz), Ext 812, for pathway advice.

NATIONAL CERTIFICATE OF EDUCATIONAL ACHIEVEMENT

New Zealand's qualification for school learners is the National Certificate of Educational Achievement – NCEA. NCEA is a qualification on New Zealand's National Qualifications Framework (NQF).

- NCEA is achievement based. Standards have been set in each area of learning. When students achieve these standards, they earn credits towards their NCEA qualification.
- The NQF contains assessment standards: Credits from all achievement standards and unit standards count towards NCEA.
- Achievement standards (AS) allow students to show the quality of their achievement in a standard – students can just achieve the standard, or achieve it with Merit or with Excellence.
- For Unit standards (US), students can either achieve the standard by meeting the criteria or not achieve the standard. There are no merit or excellence grades.

- Some standards are assessed in school during the year (internally); other achievement standards are assessed externally (usually in end-of-year exams).
- All unit standards are internally assessed.

NCEA RESULTS

In January, the New Zealand Qualifications Authority (NZQA) issues students with a full profile of their achievement in each subject online. This interim results notice shows:

- The student's credits and grades for each standard.
- Endorsements (course or certificate level).
- NZQA will also provide each student with a record of achievement which summarises all standards, credits and qualifications gained to date.

NCEA candidates can also access personal performance information themselves via <https://www.nzqa.govt.nz/login/> using their NZQA learner log in.

HOW DO STUDENTS COMPLETE A QUALIFICATION?

There are three NCEA qualifications. The requirements for each level are shown below:

Level 1 - 80 credits from any level (including 10 literacy and 10 numeracy credits).

Level 2 - 80 credits, with at least 60 credits from Level 2 or above (including 10 literacy and 10 numeracy credits from Level 1).

Level 3 - 80 credits, with at least 60 credits from Level 3 or above (including 10 literacy and 10 numeracy credits from Level 1).

Once the 10 literacy and 10 numeracy credit requirement is completed it will count for subsequent levels.

NCEA LEVEL 1-3 CERTIFICATE ENDORSEMENTS

Students can achieve their certificate with Merit or Excellence endorsement. The requirements for the qualification must also be met.

Endorsement with Merit: 50 credits at Merit or Excellence at the same level or higher.

Endorsement with Excellence: 50 credits at Excellence at the same level or higher.

Credits counting towards endorsement may be gained over more than one year and more than one level, but must be gained at the level of the certificate or above. For example, Level 2 credits will count towards endorsement of a Level 1 NCEA, but Level 1 credits will not count towards endorsement of a Level 2 NCEA.

NCEA LEVEL 1-3 COURSE ENDORSEMENT

To attain a course endorsement a student will need to achieve 14 or more credits at Merit and Excellence level with at least 3 credits from externally assessed standards and 3 credits from internally assessed standards in a single course in a single year. This endorsement will be recorded on the student's Result Notice.

UNIVERSITY ENTRANCE

Students who want to study at university must ensure that the courses they select at school allow them to qualify for university entry. You will be qualified for entrance to a university in New Zealand in 2021 if you have obtained all of the following:

NCEA Level 3 – 80 credits (including minimum of 60 Level 3 credits with remaining 20 credits from Level 2 or above)

L3 approved subjects – At least 14 credits in each of three Level 3 university approved subjects

Literacy – At least 10 credits at Level 2 or higher in English or Te Reo Maori or Level 4 English for Academic Purposes (EAP) or from other approved standards; 5 credits must be in reading and 5 credits must be in writing. Course descriptions use R for reading, W for writing, B for credits that can count as either reading or writing

Numeracy – At least 10 credits at Level 1 or higher from relevant standards

ENTRY REQUIREMENTS FOR UNIVERSITY COURSES

The entry criteria for any tertiary course should be checked with the university – the same course at different universities can have different entry criteria.

University Entrance will NOT give you entrance into all universities and/or all courses (UE is necessary but many courses/universities require more). Therefore, students should be gaining 80 Level 3 credits from university approved subjects.

Students intending to apply for

- University of Auckland should have FIVE university approved subjects. This should include 17 English credits at level 2 or 3 (or students will need to do a compulsory Academic English paper at university). This differs from the UE literacy requirement and must come from taking L2/L3 ENG or L2/3ENE. Students studying English for Academic Purposes (EAP) should also seek advice from their EAP teachers on how they can meet requirements for University of Auckland
- All other universities, should have a minimum of FOUR university approved subjects in their programme (five is preferable)

Some courses require a specific Rank Score. This is calculated as follows:

- Take your top 80 Level 3 credits
- For each Excellence apply 4 points, each Merit apply 3 points and each Achieved apply 2 points
- Use credits from 5 or fewer university approved subjects only
- Use a maximum of 24 credits per subject

This example has a rank score of 210 points (48 + 78 + 84)

The University of Auckland has a rank score calculator - <https://www.rankscorecalculator.auckland.ac.nz/>

The following are examples of the current requirements for NZ universities. These are subject to change and students should check the relevant university website for up to date information. Please be aware that this can change at any time.

Subject	Excellence credits	Merit credits	Achieved credits
English	8	6	10
History	-	6	16
Statistics	4	4	16
Geography	-	10	7
French			24
Subtotals	12	26	73
Best 80 credits	12	26	42 (only up to 80 credits in total)
Calculate points	48 points (12x4)	78 points (26x3)	84 points (42x2)

University	Requirement/recommendation	Website	
The University of Auckland	Arts	150 points	https://www.auckland.ac.nz/
	Science	165 points	
	Commerce	180 points (3 subjects Table A/B)	
	Bio-medical Science	280 points	
	Engineering	260 points (Physics/Calculus externals)	
AUT	UE, but check specific requirements for each course - AUT has higher guaranteed scores. They will take the top applicants for all courses	https://www.aut.ac.nz/	
University of Canterbury	UE (but check special degree requirements)	https://www.canterbury.ac.nz/	
Massey University	140 points (preferred)	http://www.massey.ac.nz/	
University of Otago	140 points (preferred)	https://www.otago.ac.nz/	
The University of Waikato	UE but look for extra criteria	https://www.waikato.ac.nz/	

Victoria University of Wellington	150 points Architecture and Building Science (180 points)	https://www.victoria.ac.nz/
UNITEC	UE for some courses; check each course for subject requirements	https://www.unitec.ac.nz/

CAREERS

Careers Guidance and Counselling is available to students, who can make appointments to see the Careers Advisor. Our Careers Room has a wide range of information available. During the year, students can attend university liaison visits, trade ITO visits, lunchtime presentations, the Careers Expo, and STAR & Gateway courses as well as participating in a number of out-of-school trips and attending a wide variety of open days and information sessions. Students at risk of leaving school unprepared for the work-place or future education/training will be identified by teachers, Deans and the Guidance Counsellors and referred to the Careers Advisor. Students leaving school have their career plans checked by the Careers Advisor before a Leaver's Form is issued.

GATEWAY

The Gateway programme assists students to transition from school into work or a tertiary course. Students are given the opportunity to work in a structured workplace environment 1 day per week for 5-10 weeks in an industry of their choice. The programme allows students to explore the practical aspects of specific career options and gives them the opportunity to gain new skills and knowledge. As part of the course, students will complete First Aid, OSH and Interview Skills courses which will give them 20 Level 2 and 3 credits.

YEAR LEVEL PROGRAMMES IN 2021

ASPIRING SCHOLARS

A programme supportive of academically excellent students and their engagement with our Junior Curriculum. It is not a "gifted" programme but one with academic extension that will be of benefit to gifted students as well. It is a programme that covers five junior curriculum classes within the same class grouping and is supportive of students in working toward NZQA Scholarship as they work through Years 9 to 13.

Being selected for the Aspiring Scholars programme is not seen as a reward but as a response to an educational need. Students selected have the right to choose not to enter the programme, without repercussions. Students not initially selected, who indicate through high performance the ability required, will be offered the opportunity to move into the programme in Year 10. Where appropriate the programme provides curriculum enrichment and encourages differentiated tasks.

Entry to our Aspiring Scholars Programme in Year 9 is determined by identification in the enrolment process, feedback from prior school, educational psychologist report (if evident), performance in entrance testing and prior scholastic performance.

ACCELERATION COURSES

Junior students identified as likely to benefit from acceleration in English and Maths are targeted for additional timetabled support for a semester.

This acceleration occurs through targeted classes running in parallel to their timetabled English or Maths class.

Entrance to the class determined in Semester 1 in Year 9 by identification in the enrolment process, feedback from prior school, educational psychologist report (if evident), performance in entrance testing and prior scholastic performance. Subsequent entry is based on the feedback of classroom teachers, a student's progress to date and in discussion with the Heads of Maths and English.

If a student's family are interested in being considered for Junior Acceleration Courses they should identify this in the enrolment process.

*Please note that all new entrant student testing data is reviewed and where the College perceives a student would benefit from engaging with Junior Acceleration Courses further discussion with parents will occur ahead of a potential placing in our course.

YEAR 9

Core subjects – all Year 9 students study English, Mathematics, Science, Social Science and Health & Physical Education. In addition, students will choose 4 modules from the list. One module must come from each table.

Modules run for ONE semester. There are two semesters in each academic year.

Table A	Table B	Table C
Art	Design & Visual	Chinese
Dance	Communication	French
Digital Art	Digital Technology	Maori
Drama	Studies	Media Studies
Music	Fabric Technology	Sales & Marketing
Digital Music	Food Technology	Sports Science & Athletic Development
	Design & Technology	

YEAR 10

Core subjects – all Year 10 students study English, Mathematics, Science, Social Science and Health & Physical Education. In addition, students will choose modules.

Languages run for TWO semesters, all other modules run for ONE semester. There are two semesters in each academic year.

Table A	Table B	Table C
Art	Design & Visual	Commerce
Dance	Communication	Media Studies
Digital Art	Digital Technology	Sports Science & Athletic Development
Drama	Studies	
Music	Fabric Technology	CHINESE
	Food Technology	FRENCH
	Design & Technology	MAORI

Students will choose **either**

- a language plus TWO other modules (one module from Table A and one from Table B)
- **OR** FOUR modules from the list above. At least one module must come from each table

Projects

In Term 4 2021, Year 9 and Year 10 students at Long Bay College will be engaged in Projects.

The students will have the opportunity to develop their own learning and explore and engage with topics that go beyond the limits of the New Zealand Curriculum. A full list of projects will be made available to students in Years 9 and 10 in Term 2, 2021 to support them in making informed choices.

YEAR 11

Students study six Level 1 NCEA subjects including English and Mathematics. Studying a Science subject is highly recommended. Students should aim for a broad range of subjects and avoid taking more than 2 from one faculty.

It is recommended that students select a manageable group of subjects. Selecting six 24-credit courses may result in too big a workload for some students. A maximum of two portfolio subjects is strongly recommended (Portfolio subjects are indicated with an λ in the subject title).

YEAR 12

Students study six NCEA subjects. Studying English is strongly recommended, especially for those who may be considering university.

There are situations where students may be studying at more than one level. If choosing portfolio subjects, students are recommended to choose a maximum of two (Portfolio subjects are indicated with an λ in the subject title).

YEAR 13

Students study six NCEA subjects **or five** NCEA subjects with an independent learning period (ILP).

Students intending to study at university should read the [UNIVERSITY ENTRANCE](#) section of this guide and check that their chosen subjects will enable them to meet the recommended entry requirements.

Students studying a mix of Level 1, 2, and 3 subjects are working towards the NCEA qualification at the appropriate level for them. If choosing portfolio subjects, students are recommended to choose a maximum of two (Portfolio subjects are indicated with an λ in the subject title).

STUDENTS WITH ADDITIONAL LEARNING NEEDS

Learning Support offers two programmes as an alternative to NCEA for our lower ability learners.

New Zealand Certificate in Skills for Living for Supported Learners Level 1 Qualification

This is a NZQA approved programme for students working at the beginning of the NZ Curriculum and who are unable to access and experience success in the NCEA system. The programme provides real opportunities for inclusion and personalized learning based on a student's strengths and interests. There is a focus on developing confidence, personal growth, self-esteem and independence.

Students (years 9 to 13) will work for 2 to 4 years on this programme, depending on their learning needs. Successful completion of this programme may lead on to the following programme:

New Zealand Certificate in Foundation Skills Level 1 Qualification

This programme is for students who are not reaching their full potential and are struggling with a full NCEA programme. It offers a flexible framework that gives students a choice of topics. Within the programme there are opportunities to generate evidence towards the 10 literacy credits and some of the numeracy credits required for NCEA Literacy & Numeracy.

Students (years 10 to 13) will work on this programme for 18 months to 2 years, depending on their learning needs. Successful completion of this programme may lead on to New Zealand Certificate in Foundation Skills Level 2 Qualification; NCEA Level 2; employment or vocational training/apprenticeships.

Special Assessment Conditions

Learning Support also supports students with Special Assessment Conditions (SAC), through making Special Assessment Condition applications to NZQA, providing advice to teachers and students, and providing SAC for some assessments.

Please contact Glenda Keith, SENCo: gkeith@lbc.school.nz for further information.

ENGLISH FOR ACADEMIC PURPOSES

Long Bay College provides cutting-edge courses for all English language learners, based on individual needs and chosen pathways.

Effective and relevant programmes help students to become confident and proficient in English. By studying at Long Bay College, students are not only supported in everyday life in New Zealand, but are also able to access the entire curriculum at the school and be successful in their academic studies.

EAP courses have been carefully designed to provide the framework for language learning, as well as the skills required to achieve at NCEA. All levels of English are catered for, from Beginners to Advanced. Many courses are also NCEA accredited and provide a pathway to University Entrance literacy.

All students will be assessed for English levels on arrival. Progress will then be carefully monitored, and the EAP teacher, along with the Head of EAP, will regularly review language levels.

All EAP classes are taught in a positive, inclusive learning environment.

The English for Academic Purposes curriculum is designed to assist students in acquiring the language skills they need to function effectively in a highly literate, often multi-lingual society.

Please see [English for Academic Purposes](#) (EAP) in the Global Studies section of this guide. This is the most relevant and effective pathway for English language learners.

SCHOLARSHIP

NZQA Scholarship is the premier academic award a secondary school student in New Zealand can achieve. It is separate to NCEA Levels 1, 2 or 3. Programmes and tutorials outside of class support students working towards NZQA Scholarship exams. For more information about Scholarship subjects, please see our Scholarship prospectus.

COURSE DESCRIPTIONS

The courses are grouped in learning areas. For each course, you need to check:

- The course it follows on from
- where the subject leads to
- the number and type of credits offered

Each learning area will include a pathway chart & descriptions of the courses. The descriptions include:

- an outline of the course
- the number of credits available (Int = internally assessed, ext = externally assessed)
- the contribution to Level 1 literacy, numeracy or University Entrance literacy (R = reading, W = writing, B = can count as either reading or writing)
- whether an endorsement is possible for the course
- staff member in charge of the course

On pathway charts

- Lines between subjects indicate recommended pathways.
- Prior experience and success in a subject is a strong predictor of future success.
- If a student is likely to study a subject in later levels early specialisation is recommended.

COURSES AVAILABLE

Some subjects stop at Level 1, some at Level 2 and some lead into two or three other subjects. Compulsory courses are in **BOLD**. Courses in CAPITALS are full year, *others* are one semester. Senior courses are (or lead to) university approved courses unless they are UNDERLINED. Courses that are in *ITALICS* are taught twice per week after school.

	Year 9	Year 10	Year 11	Year 12	Year 13
Business	Sales & Marketing	Commerce	ACCOUNTING BUSINESS STUDIES ECONOMICS ACCOUNTING & ECONOMICS TRANSITION (English language learners)	ACCOUNTING BUSINESS STUDIES or BUSINESS STUDIES EXTENSION ECONOMICS	ACCOUNTING BUSINESS STUDIES or BUSINESS STUDIES EXTENSION ECONOMICS
English	ENGLISH Or ENGLISH ENRICHMENT Targeted Literacy	ENGLISH Or ENGLISH ENRICHMENT Targeted Literacy	ENGLISH Or ENGLISH ENRICHMENT Or <u>ENGLISH FOR LITERACY</u>	ENGLISH Or ENGLISH ENRICHMENT Or <u>ENGLISH FOR LITERACY</u>	ENGLISH Or ENGLISH ENRICHMENT Or <u>ENGLISH FOR LITERACY</u>
Health & Physical Education	HEALTH & PHYSICAL EDUCATION Sports Science & Athletic Development	HEALTH & PHYSICAL EDUCATION Sports Science & Athletic Development	HEALTH PHYSICAL EDUCATION HEALTH & PE	HEALTH PHYSICAL EDUCATION <u>PRACTICAL PE & SPORTS LEADERSHIP</u>	HEALTH PHYSICAL EDUCATION <u>PRACTICAL PE & SPORTS LEADERSHIP</u> <u>FITNESS STUDIES</u>
Global Studies	ENGLISH FOR ACADEMIC PURPOSES (EAP) (English language learners) Chinese French Maori	EAP (English language learners) CHINESE FRENCH MAORI	<u>EAP</u> (English language learners) CHINESE FRENCH MAORI	<u>EAP</u> (English language learners) CHINESE FRENCH MAORI <i>CHINESE FOR NATIVE SPEAKERS</i>	<u>EAP</u> (English language learners) <u>EAF</u> (English language learners foundation studies) CHINESE FRENCH MAORI <u>IELTS PREPARATION COURSE</u> <i>CHINESE FOR NATIVE SPEAKERS</i> <i>LANGUAGES FOR NATIVE SPEAKERS</i>

Mathematics	MATHEMATICS Targeted Numeracy	MATHEMATICS Or MATHEMATICS ENRICHMENT Targeted Numeracy	MATHEMATICS Or MATHEMATICS ENRICHMENT MATHEMATICS TRANSITION (English language learners)	MATHEMATICS STATISTICS CALCULUS	MATHEMATICS STATISTICS CALCULUS
Performing Arts	Dance Drama Music Digital Music	Dance Drama Music	DANCE DRAMA MUSIC	DANCE DRAMA MUSIC	DANCE DRAMA MUSIC
Science	SCIENCE	SCIENCE	BIOLOGY CHEMISTRY EARTH & SPACE SCIENCE PHYSICS <u>GENERAL SCIENCE</u> SCIENCE TRANSITION (English language learners)	BIOLOGY CHEMISTRY EARTH & SPACE SCIENCE PHYSICS	BIOLOGY CHEMISTRY EARTH & SPACE SCIENCE PHYSICS
Social Science	SOCIAL SCIENCE Media Studies	SOCIAL SCIENCE Media Studies	GEOGRAPHY HISTORY MEDIA STUDIES	CLASSICS GEOGRAPHY HISTORY MEDIA STUDIES PSYCHOLOGY <u>TOURISM</u>	CLASSICS GEOGRAPHY HISTORY MEDIA STUDIES <u>TOURISM</u>

Technology	Design & Visual Communication	Design & Visual Communication	DESIGN & VISUAL COMMUNICATION	DESIGN & VISUAL COMMUNICATION	DESIGN & VISUAL COMMUNICATION
	Digital Technology Studies	Digital Technology Studies	DIGITAL TECHNOLOGY STUDIES	DIGITAL TECHNOLOGY STUDIES	DIGITAL TECHNOLOGY STUDIES
	Fabric Technology	Fabric Technology	DESIGN & TECHNOLOGY	ELECTRONICS <u>ENGINEERING</u>	ELECTRONICS <u>ENGINEERING</u>
	Food Technology	Food Technology	<u>ENGINEERING</u> FABRIC TECHNOLOGY	FABRIC TECHNOLOGY	FABRIC TECHNOLOGY
	Design & Technology	Design & Technology Foundation Technology (English language learners)	<u>HOSPITALITY</u> <u>WOOD TECHNOLOGY</u>	<u>HOSPITALITY</u> <u>WOOD TECHNOLOGY</u>	<u>HOSPITALITY</u> <u>WOOD TECHNOLOGY</u>
Visual Arts	Art Digital Art	Art Digital Art	ART	DESIGN PAINTING PHOTOGRAPHY SCULPTURE ART HISTORY	DESIGN PAINTING PHOTOGRAPHY SCULPTURE ART HISTORY

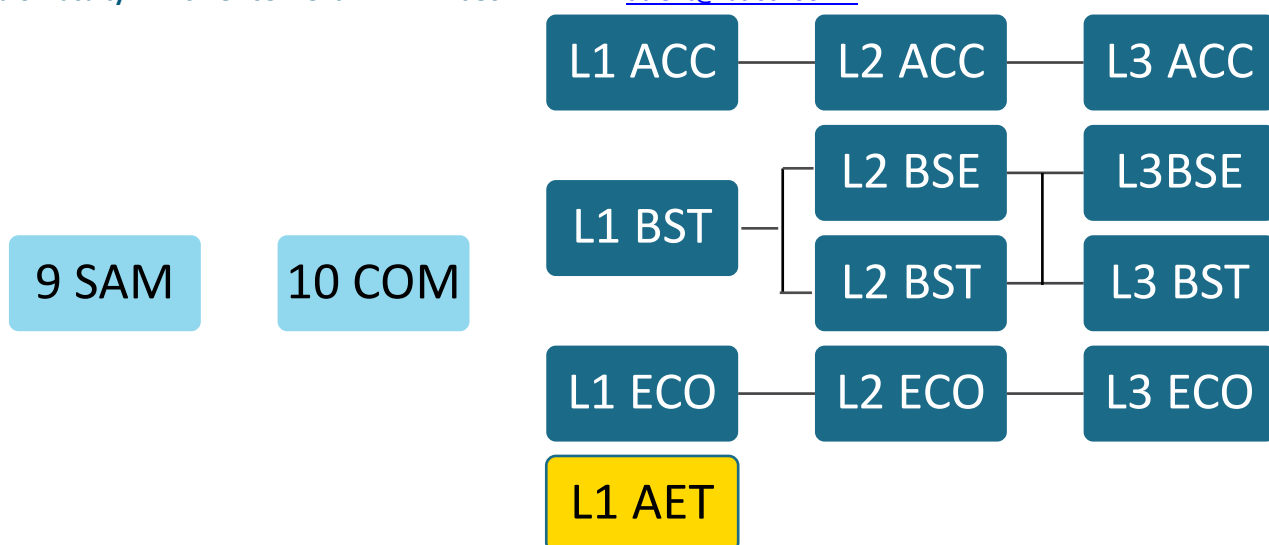
All courses offered will be run subject to student numbers and staffing availability at the Principal's discretion.

BUSINESS

Head of Faculty – Mrs Denise Trent

Ext 862

dtrent@lbc.school.nz



Y9 SALES AND MARKETING (9SAM)

This course leads to 10COM

The course challenges students to think about different aspects of marketing, and how this influences how a business might make decisions about their product development, or their advertising. During the course students will also have the opportunity to design a product and develop their own skills using print and on-line or film media to advertise their product.

Teacher in charge - Mrs Denise Trent

Y10 COMMERCE (10COM)

This course leads to L1ACC, L1BST, L1ECO

This course aims to develop students financial capability and gain some knowledge and skills in Accounting, Business and Economics. The emphasis at this level is on individual students, their whanau and small business. It will enable students to understand how the individual makes economic and financial decisions. It is aimed at helping them gain the skills needed to manage their personal limited means. This will allow students to participate more effectively in their daily lives as consumers and workers. Students will learn basic accounting concepts, how households behave in a collective way and discover that enterprise and entrepreneurship exist in many forms in their own community.

Teacher in charge - Mrs Denise Trent

L1 ACCOUNTING & ECONOMICS TRANSITION (L1AET)

This course leads to L2ACC, L2BST, L2ECO

This course is designed for English language learners. It develops a student's understanding of how the individual makes economic and financial decisions. It is aimed at helping them gain the skills needed to manage their personal limited means; understand economic terminology; supply and demand; basic accounting concepts; processing of transactions and the preparation of financial statements. This transition course helps to develop a student's use of business language and apply it in business settings. It provides a pathway for Accounting, Economics and Business Studies in our senior school and for future tertiary study. Students will attempt various achievement standards at NCEA level 1 according to their individual development.

Teacher in charge – Mrs Denise Trent

This course leads to a university approved course

L1 ACCOUNTING (L1ACC)

This course follows on from 10COM and leads to L2ACC

This course gives students an understanding of the business world as it affects the individual. The aim is to provide students with knowledge and skills in Accounting. The skills learnt include the conceptual basis of accounting, processing financial transactions for a small entity, preparation and understanding of financial statements, making a financial decision and preparing financial information for a community organisation. This course will benefit students in any career they choose as well as in managing their own financial affairs.

Teacher in charge - Mrs Denise Trent

Students in this course will be working towards

12 credits that are internally assessed and 8 credits that are externally assessed

10 credits towards Level 1 Literacy

Course endorsement is possible in L1 Accounting

This course leads to a university approved course

L1 BUSINESS STUDIES (L1BST)

This course follows on from 10COM and leads to L2BST, L2BSE

This is a foundation course that will help students gain business knowledge and understand the way businesses operate. Students will gain real life experience carrying out a business. It will set students up for further study in Business.

Teacher in charge - Mrs Denise Trent

Students in this course will be working towards

12 credits that are internally assessed and 8 credits that are externally assessed

20 credits towards Level 1 Literacy

Course endorsement is possible in L1 Business Studies

This course leads to a university approved course

L1 ECONOMICS (L1ECO)

This course follows on from 10COM and leads to L2ECO

Whether it's scarcity (limited resources), opportunity cost (what must be given up obtaining something else), or equilibrium (the price at which demand equals supply), this course gives students a fluency in fundamental terms needed to understand how markets work. L1 Economics gives students tools that allow them to decode their own behaviour and enable students to make economically sound decisions.

Teacher in charge - Mrs Denise Trent

Students in this course will be working towards

12 credits that are internally assessed and 9 credits that are externally assessed

21 credits towards Level 1 Literacy

Course endorsement is possible in L1 Economics

This course leads to a university approved course

L2 ACCOUNTING (L2ACC)

This course follows on from L1ACC and leads to L3ACC

The aim of this course is to introduce students to manual and computer methods of recording accounting data and to provide them with a clear basic understanding of financial reports and their components. The course will assist students to understand the accounting principles and processes involved in designing an accounting system, accounting for cash, accounts receivable, accounts payable, inventory and property, plant and equipment. Students will prepare and analyse financial statements. This course will benefit students in any career they choose.

Teacher in charge - Mrs Denise Trent

Students in this course will be working towards

10 credits that are internally assessed and 9 credits that are externally assessed

10 credits towards Level 1 Literacy

19 credits towards Numeracy

Course endorsement is possible in L2 Accounting

This course leads to a university approved course

L2 BUSINESS STUDIES (L2BST)

This course follows on from L1ACC, L1BST, L1ECO and leads to L3BST, L3BSE

This course introduces students to the practical aspects of running their own business and being self-employed. They will experience first-hand what it is like to operate a business. The subject delivers both theory and academic content related to business (e.g. market research, motivation theory, budgeting) and the practical and technical skill sets, as well as interpersonal skill sets of working within a team, and running a business.

Teacher in charge - Mrs Denise Trent

Students in this course will be working towards

18 credits that are internally assessed and 0 credits that are externally assessed

15 credits towards Level 1 Literacy

3 credits towards Numeracy

Course endorsement is not possible in L2 Business Studies

This course leads to a university approved course

L2 BUSINESS STUDIES EXTENSION (L2BSE)

This course follows on from L1ACC, L1BST, L1ECO and leads to L3BSE, L3BST

This subject gives students a chance to learn and apply skills related to Business Studies. Students will look at the internal operations of a large business and how a large business responds to external factors. They will also undertake a practical investigation by running a social enterprise in the local community. The subject delivers both theory and academic content related to business e.g. market research and the practical and technical skill sets, as well as interpersonal skill sets of working within a team, and running a business. Additionally, students are stretched to apply their academic and theoretical understanding in the exams, as they need to apply their understanding in business situations, to produce realistic solutions in a business setting.

Teacher in charge - Mrs Denise Trent

Students in this course will be working towards

12 credits that are internally assessed and 8 credits that are externally assessed

20 credits towards Level 1 Literacy

Course endorsement is possible in L2 Business Studies Extension

This course leads to a university approved course

L2 ECONOMICS (L2ECO)

This course follows on from L1ECO and leads to L3ECO

Economics provides excellent insight into the real world. The course covers macroeconomics which plays a key role in all aspects of life and especially the politics part of the aggregate Aotearoa economy. Economics students will be well equipped with analytical and problem-solving skills, numerical and computer skills, as well as the ability to work well either alone or within a team. All of these skills are very transferable allowing students to branch into anything from stock investment, money exchange, business start-ups, to becoming a wise voter in the coming general election.

Teacher in charge - Mrs Denise Trent

Students in this course will be working towards

14 credits that are internally assessed and 8 credits that are externally assessed

22 credits towards Level 1 Literacy

10R, 8W credits to UE literacy (R/W/B)

Course endorsement is possible in L2 Economics

This course leads to a university approved course

L3 ACCOUNTING (L3ACC)

This course follows on from L2ACC

The aim of the course is to provide a foundation for the study of Accounting at University and other tertiary institutions. The course covers accounting for Partnerships, Companies and Manufacturing organisations. Students will develop their understanding of the conceptual basis of accounting, process transactions, prepare financial statements and explain information for management decision making. This course will benefit students in any career they choose.

Teacher in charge - Mrs Denise Trent

Students in this course will be working towards

13 credits that are internally assessed and 9 credits that are externally assessed

13 credits towards Level 1 Literacy

22 credits towards Numeracy

Course endorsement is possible in L3 Accounting

5B credits to UE literacy (R/W/B)

This course is university approved

L3 BUSINESS STUDIES (L3BST)

This course follows on from L2BST, L2BSE

This subject gives students a chance to learn and apply skills related to Business Studies. The highlight of this course is a practical business experience which sees students develop, outsource production, market, and sell an innovative and sustainable product. Students will gain valuable experience in leadership, business operations, human resource, finance and collaborating with others. The subject delivers both theory and academic content related to business and the practical and technical skill sets, as well as interpersonal skill sets of working within a team, and running a business. This course is internally assessed and does not offer subject endorsement.

Teacher in charge - Mrs Denise Trent

Students in this course will be working towards

18 credits that are internally assessed and 0 credits that are externally assessed

18 credits towards Level 1 Literacy

18R credits to UE literacy (R/W/B)

Course endorsement is not possible in L3 Business Studies

This course is university approved

L3 BUSINESS STUDIES EXTENSION (L3BSE)

This course follows on from L2BSE, L2BST

During this course, students will investigate the global business environment and how businesses compete on the world stage. They will also undertake a complex business activity: developing, marketing, and producing a product for market through the YES Programme. The subject delivers both theory and academic content related to business (e.g. market research, report writing, understanding organisational issues) and the practical and technical skill sets, as well as interpersonal skill sets of working within a team, and running a business. Students of many diverse backgrounds enjoy the subject as it has wide ranging applications, and report that their learning feels tangible and immediately applicable.

Teacher in charge - Mrs Denise Trent

Students in this course will be working towards

18 credits that are internally assessed and 8 credits that are externally assessed

23 credits towards Level 1 Literacy

15R, 8B credits to UE literacy (R/W/B)

Course endorsement is possible in L3 Business Studies Extension

This course is university approved

L3 ECONOMICS (L3ECO)

This course follows on from L2ECO

Economics is the perfect combination of numbers and words, problems, essays, calculations and interpretations. It is both an art and a science subject. Students will have the opportunity to learn and build microeconomic models which give insights into the real world, and then to critique these models on the basis of their assumptions. There is rarely a right answer in Economics but any argument put forward must be backed up by quantitative evidence. Students will ultimately enjoy Economics because it allows them to employ and develop analytical and evaluative skills.

Teacher in charge - Mrs Denise Trent

Students in this course will be working towards

10 credits that are internally assessed and 10 credits that are externally assessed

20 credits towards Level 1 Literacy

10R, 10B credits to UE literacy (R/W/B)

Course endorsement is possible in L3 Economics

This course is university approved

ENGLISH

Head of Faculty - Mrs Jennie Taylor

Ext 867

jtaylor@lbc.school.nz

The relevant and effective pathway for English language learners is English for Academic Purposes (EAP) Please see the [course descriptions](#) in the Global Studies section of this guide.



Y9 ENGLISH (9ENG)

This course leads to 10ENE/10ENG

Students will gain a deeper understanding of the English language by having a variety of opportunities for language to be used. There are two broad language streams: creating meaning and making meaning. The course itself will consist of comprehending a variety of texts, responding to texts, writing creatively and formally, presenting visually and orally, using research skills and reading widely and independently. Grammar and spelling are emphasised.

Teacher in charge - Ms Jennie Taylor

Y9 ENGLISH ENRICHMENT (9ENE)

This course leads to 10ENE/10ENG

This course is aimed at our very able and gifted students. Students will gain a deeper understanding of the English language by having a variety of opportunities for language to be used. There are two broad language streams: creating meaning and making meaning. The course itself will consist of comprehending a variety of texts, responding to texts, writing creatively and formally, presenting visually and orally, using research skills and reading widely and independently. Grammar and spelling are emphasised.

Teacher in charge - Ms Jennie Taylor

Y9 ENGLISH TARGETED (9ENL)

This course is in response to students' needs and teacher recommendations. This course offers additional literacy support to students who are struggling to achieve in mainstream classes.

Teacher in charge - Ms Jennie Taylor

Y10 ENGLISH (10ENG)

This course leads to L1ENE/L1ENG/L1ENL

Students will gain a deeper understanding of the English language by having a variety of opportunities for language to be used. There are two broad language streams: creating meaning and making meaning. The course itself will consist of exploring a variety of texts, writing creatively and formally, presenting visually and orally, using research skills and reading widely and independently. There is a focus on developing the skills needed for a high level of reading and writing competency. Specific language features and vocabulary are emphasised.

Teacher in charge - Ms Jennie Taylor

Y10 ENGLISH ENRICHMENT (10ENE)

This course leads to L1ENE/L1ENG/L1ENL

This programme is designed to challenge and extend students who are highly capable in English. Students will gain a deeper understanding of the English language by having a variety of opportunities for language to be used. There are two broad language streams: creating meaning and making meaning. The course itself will consist of comprehending a variety of texts, responding to texts, writing creatively and formally, presenting visually and orally, using research skills and reading widely and independently. In this course, there is an increasing focus on the requirements for achieving Excellence in Level 1 NCEA, especially in Literature Studies and Writing. Specific language features and vocabulary are emphasised.

Teacher in charge - Ms Jennie Taylor

Y10 ENGLISH TARGETED (10ENL)

This course is in response to students' needs and teacher recommendations. This course offers additional literacy support to students who are struggling to achieve in mainstream classes.

Teacher in charge - Ms Jennie Taylor

L1 ENGLISH (L1ENG)

This course follows on from 10ENG/10ENE and leads to L2ENE/L2ENG/L2ENL

This course will provide the English component of Level 1 NCEA. It will be a combination of internal and external standards.

Teacher in charge - Ms Jennie Taylor

Students in this course will be working towards

12 credits that are internally assessed and 4 credits that are externally assessed

16 credits towards Level 1 Literacy

Course endorsement is possible in L1 English

This course leads to a university approved course

L1 ENGLISH ENRICHMENT (L1ENE)

This course follows on from 10ENG/10ENE and leads to L2ENG/L2ENE

Texts studied will be of a more academic nature and students will be encouraged to engage with the English curriculum at a much more advanced level.

Teacher in charge - Ms Jennie Taylor

Students in this course will be working towards

9 credits that are internally assessed and 8 credits that are externally assessed

17 credits towards Level 1 Literacy

Course endorsement is possible in L1 English Enrichment

This course leads to a university approved course

L1 ENGLISH FOR LITERACY (L1ENL)

This course follows on from 10ENG/10ENE and leads to L2ENG/L2ENL

This course will focus on the reading and writing skills necessary for competent, functional literacy in the future workplace and the wider world. Basic skills will be emphasised. This course will provide students with the opportunity to complete their NCEA Level 1 Literacy requirements.

Teacher in charge - Ms Jennie Taylor

Students in this course will be working towards

16 credits that are internally assessed and 0 credits that are externally assessed

Course endorsement is not possible in L1 English for Literacy

This course can lead to a university approved course

16 credits towards Level 1 Literacy

L2 ENGLISH (L2ENG)

This course follows on from L1ENE/L1ENG/L1ENL and leads to L3ENE/L3ENG/L3ENL

This course will consist of a combination of internal and external standards. The course is aimed at students who enjoy and value the English language as an effective means of communication. It will not have literature as a focus, although there will be opportunities to experience this aspect. This is an academic course and students will be encouraged to aim high. All ability levels will be catered for within each class. Students will have the opportunity to gain their UE Literacy and will explore topics and texts that interest them. It will make use of 'real world' situations in the development of reading and writing skills.

Teacher in charge - Ms Jennie Taylor

Students in this course will be working towards

16 credits that are internally assessed and 4 credits that are externally assessed

Course endorsement is possible in L2 English

This course leads to a university approved course

20 credits towards Level 1 Literacy

4R, 9W, 4B credits to UE literacy (R/W/B)

L2 ENGLISH LITERATURE (L2ENE)

This course follows on from L1ENE/L1ENG and leads to L3ENE/L3ENG

This course will consist of a combination of internal and external standards. It is aimed at all students who enjoy experiencing texts that challenge and interest them. It is for students who love writing - in all forms. It will be strongly based on a wide range of 'literature' and will focus on extending reading and writing skills. The course is open to students of all levels of ability and will provide the opportunity to gain UE Literacy.

Teacher in charge - Ms Jennie Taylor

Students in this course will be working towards

13 credits that are internally assessed and 8 credits that are externally assessed

Course endorsement is possible in L2 English Literature

This course leads to a university approved course

21 credits towards Level 1 Literacy

4R, 6W, 8B credits to UE literacy (R/W/B)

L2 ENGLISH FOR LITERACY (L2ENL)

This course follows on from L1ENG/L1ENL and leads to L3ENL

This Unit Standards course will focus on the reading and writing skills necessary for competent, functional literacy in the future workplace and the wider world. Basic skills will be emphasised. This course will provide students with the opportunity to work towards their NCEA Level 2 Literacy requirements. Individual Learning programmes are put in place to meet the needs of each student.

Teacher in charge - Ms Jennie Taylor

Students in this course will be working towards

21 credits that are internally assessed and 0 credits that are externally assessed

Course endorsement is not possible in L2 English for Literacy

This course does not lead to a university approved course

3 credits towards Level 1 Literacy

L3 ENGLISH (L3ENG)

This course follows on from L2ENE/L2ENG

This is an academically challenging course, aimed at students who enjoy and value the English language as an effective means of communication. Film analysis is a large focus, with additional opportunities to study other forms of literature. Students will be encouraged to challenge themselves as readers and writers. Students will have the opportunity to gain their UE Literacy and will explore topics and texts that interest them.

Teacher in charge - Ms Jennie Taylor

Students in this course will be working towards

16 credits that are internally assessed and 4 credits that are externally assessed

Course endorsement is possible in L3 English

This course is university approved

20 credits towards Level 1 Literacy

6W, 4B credits to UE literacy (R/W/B)

L3 ENGLISH LITERATURE (L3ENE)

This course follows on from L2ENE/L2ENG

This course will consist of a combination of internal and external standards and is aimed at all students who enjoy experiencing texts that challenge and interest them. It is for students who love writing - in all forms. It will be strongly based on a wide range of literature and will focus on extending reading and writing skills. The course will provide the opportunity to gain UE Literacy.

Teacher in charge - Ms Jennie Taylor

Students in this course will be working towards

16 credits that are internally assessed and 8 credits that are externally assessed

Course endorsement is possible in L3 English Literature

This course is university approved

24 credits towards Level 1 Literacy

4R, 6W, 8B, credits to UE literacy (R/W/B)

L3 ENGLISH FOR LITERACY (L3ENL)

This course follows on from L2ENG/L2ENL

This course will focus on the reading and writing skills necessary for competent, functional literacy in the future workplace and the wider world. Basic skills will be emphasised. This course will provide students with the opportunity to gain Level 3 credits while developing their communication skills.

Teacher in charge - Ms Jennie Taylor

Students in this course will be working towards

18 credits that are internally assessed and 0 credits that are externally assessed

Course endorsement is not possible in L3 English for Literacy

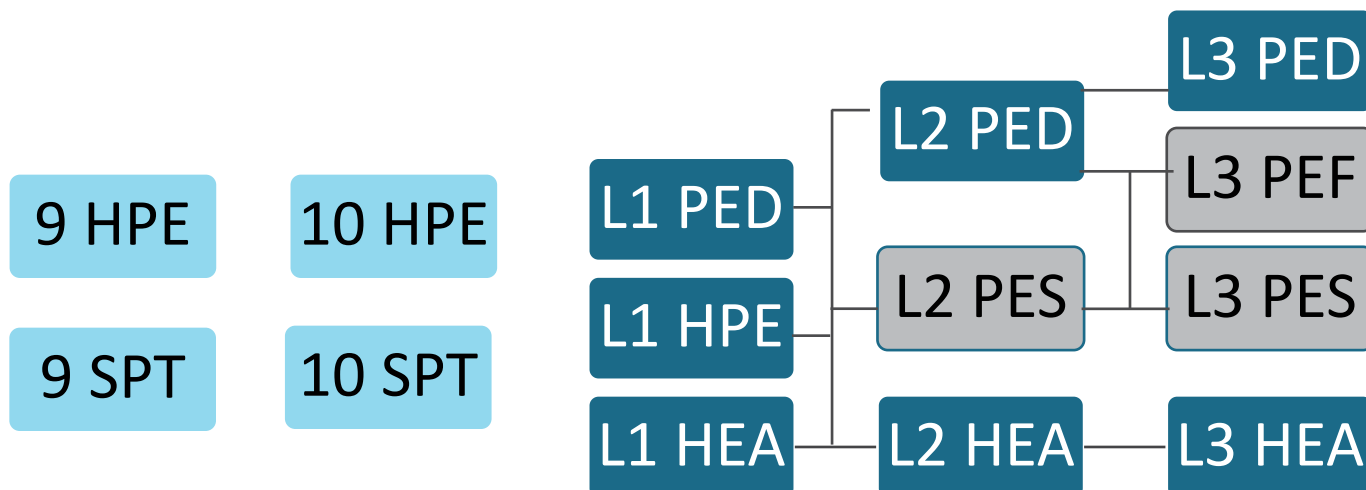
This course is not university approved

3 credits towards Level 1 Literacy

HEALTH & PHYSICAL EDUCATION

Head of Faculty –Mrs Mo Gleeson Ext 813

mgleeson@lbc.school.nz



Y9 HEALTH AND PHYSICAL EDUCATION (9HPE)

This course leads to 10HPE

Health and Physical Education (HPE) is a practical and theoretical based subject. In Physical Education, students gain an appreciation of participating in team and individual activities, as well as developing and mastering physical and social skills. Students will also be given the opportunity to learn the skills necessary to work safely in our Latitude 36 Fitness hub. Health Education covers: healthy lifestyles, friendships and bullying, sexuality and relationship education and alcohol and drug education.

Teacher in charge - Mrs Mo Gleeson

Y9 SPORTS SCIENCE AND ATHLETIC DEVELOPMENT (9SPT)

This course leads to 10SPT

Students will use the context of sport and physical education to develop their understanding of basic sport science and athletic development.

Areas of study will include: • Anatomy • Biomechanics • Physiology • Sports Psychology • Socio-cultural perspectives • Well-being

Teacher in charge - Mrs Mo Gleeson

Y10 HEALTH AND PHYSICAL EDUCATION (10HPE)

This course leads to L1HEA, L1PED, L1HPE

Year 10 Health and Physical Education focuses on developing physical skills, thinking processes and aspects of Health Education. This course will have both practical and theoretical units of learning across the full year.

There will be a focus on developing students understanding of the key concepts from the Health and Physical Education curriculum as well as developing mental and physical skills from year 9.

Areas of study will include: Well-being, challenging attitudes and values, sexuality education, health promotion and mental health awareness.

Teacher in charge - Mrs Mo Gleeson

Y10 SPORTS SCIENCE AND ATHLETIC DEVELOPMENT (10SPT)

This course leads to L1PED, L1HPE

Students will use the context of sport and physical education to develop their understanding of sports science and athletic development. Areas of study will include: • Biomechanics and performance analysis • Exercise Physiology • Sports Psychology and performance improvement • Methods and principles of training.

Teacher in charge - Mrs Mo Gleeson

L1 HEALTH AND PHYSICAL EDUCATION (L1HPE)

This course follows on from 10HPE and leads to L2HEA, L2PED, L2PES

This course is a combined Health and Physical Education course which allows a breadth of choice at year 11. This course may also benefit students who don't consider themselves to be highly sport focused, but enjoy the practical side of physical education and the underlying concepts.

Areas of study include:

- Interpersonal skills
- Managing well being
- Safe and responsible behaviours in the outdoors

Students will also have the opportunity to experience a range of practical activities as well as develop a deeper level of understanding of the underlying concepts of Health and Physical Education.

Teacher in charge - Mrs Mo Gleeson

Students in this course will be working towards

23 credits that are internally assessed and 0 credits that are externally assessed

12 credits towards Level 1 Literacy

Course endorsement is possible in L1 Health and Physical Education

This course leads to a university approved course

L1 HEALTH (L1HEA)

This course follows on from 10HPE and leads to L2HEA

This course is made up of internal and external Achievement Standards and aims to look at current health issues.

Areas of study include:

- Adolescent eating patterns
- Changing states of health and management of eating patterns
- Understanding sexuality and sexual well-being
- Issues relating to drug use

Teacher in charge - Miss Lucy Doran

Students in this course will be working towards

16 credits that are internally assessed and 4 credits that are externally assessed

20 credits towards Level 1 Literacy

Course endorsement is possible in L1 Health

This course leads to a university approved course

L1 PHYSICAL EDUCATION (L1PED)

This course follows on from 10HPE and leads to L2PED, L2PES

The course is both theoretical and practical. Students will cover, in greater detail, biomechanical and physiological aspects of the body, technique analysis, interpersonal skills within a team or group and participation in a range of physical activities. Students will also be given an opportunity to complete a performance improvement programme through the practical context of futsal.

Teacher in charge - Mrs Mo Gleeson

Students in this course will be working towards

18 credits that are internally assessed and 0 credits that are externally assessed

7 credits towards Level 1 Literacy

Course endorsement is possible in L1 Physical Education

This course leads to a university approved course

L2 HEALTH (L2HEA)

This course follows on from L1HEA, L1HPE and leads to L3 HEA

The NCEA Level 2 course builds on skills developed at Level 1. Students will learn how to analyse current adolescent health issues and look at their impact on New Zealand society. They will work within the school and wider community to enhance the well-being of a selected group. Students will develop strategies to address issues around sexuality, gender and identity.

Teacher in charge – Miss Lucy Doran

Students in this course will be working towards

15 credits that are internally assessed and 5 credits that are externally assessed

20 credits towards Level 1 Literacy

Course endorsement is possible in L2 Health

This course leads to a university approved course

L2 PHYSICAL EDUCATION (L2PED)

This course follows on from L1PED, L1HPE and leads to L3 PED, L3PES, L3PEF

This course focuses on developing the knowledge and skills related to physical activity. Students will study theoretical and practical aspects of physical education related to: personal performance, knowledge of anatomy, biomechanics and skill learning, leadership roles, safety management, the significance of participation in physical activity and principles and methods of training. A three-day outdoor education trip to Shakespear Regional Park is the highlight of the year.

Teacher in charge - Mrs Mo Gleeson

Students in this course will be working towards

20 credits that are internally assessed and 0 credits that are externally assessed

16 credits towards Level 1 Literacy

Course endorsement is possible in L2 Physical Education

This course leads to a university approved course

L2 PRACTICAL PHYSICAL EDUCATION AND SPORTS LEADERSHIP (L2PES)

This course follows on from L1PED, L1HPE and leads to L3 PES

This course is both practical and theoretical. It encompasses adventure based learning, leadership and safety, social responsibility and practical performance. Students will learn the traditional game of Ki-O-Rahi, as well as being given the opportunity to develop their leadership, safety and coaching skills. This course is targeted for students who are not considering future university study and cannot be taken with L2PED.

Teacher in charge - Mrs Mo Gleeson

Students in this course will be working towards

22 credits that are internally assessed and 0 credits that are externally assessed

7 credits towards Level 1 Literacy

Course endorsement is possible in L2 Practical Physical Education and Leadership

This course does not lead to a university approved course

L3 HEALTH (L3HEA)

This course follows on from L2HEA

Level 3 Health is designed to look at current issues relevant to NZ and other countries. This course is made up of both internal and external Achievement Standards. It covers New Zealand current health issues such as family violence, evaluating New Zealand health practices in relation to treating a current illness such as cancer or depression, international health issues; focusing on the Asia/Pacific region, current ethical issues relating to well-being looking at topics such as euthanasia or abortion. This course could be of interest to students who are thinking of further study in any areas of health science, psychology or social work.

Teacher in charge - Miss Lucy Doran

Students in this course will be working towards

14 credits that are internally assessed and 5 credits that are externally assessed

19 credits towards Level 1 Literacy

14R, 5B credits to UE literacy (R/W/B)

Course endorsement is possible in L3 Health

This course is university approved

L3 PHYSICAL EDUCATION (L3PED)

This course follows on from L2PED

This course provides 18 Level 3 achievement standard credits all internally assessed. The course aims to develop and apply the knowledge base developed in Level 1 and 2 Physical Education. This includes strategies to improve performance, biomechanics, anatomy and physiology. This course also covers applying safety management strategies, which takes students on a 1-day outdoor education trip. A research assignment on current issues in NZ Sport and physical education is also offered. Students can choose to participate in the 'Tough Guy' challenge as part of their practical assessment.

Teacher in charge - Mrs Mo Gleeson

Students in this course will be working towards

18 credits that are internally assessed and 0 credits that are externally assessed

10 credits towards Level 1 Literacy

4 credits towards Numeracy

Course endorsement is possible in L3 Physical Education

4R credits to UE literacy (R/W/B)

This course is university approved

L3 PRACTICAL PHYSICAL EDUCATION AND SPORTS LEADERSHIP (L3PES)

This course follows on from L2PES, L2PED

This course aims to develop the leaderships skills learnt in both Level 2 Physical Education courses. Students will be given the opportunity to develop their coaching skills through the completion of the Growing Coaches PLUS Award. Students will also look at how to identify and manage risks and injuries in sporting situations as well as complete their own practical performance assessment. This course is targeted for students who are not considering further study at University. Students cannot study L3PED with this course.

Teacher in charge - Mrs Mo Gleeson

Students in this course will be working towards

23 credits that are internally assessed and 0 credits that are externally assessed

4 credits towards Numeracy

Course endorsement is not possible in L3 Practical Physical Education and Sports Leadership

This course is not university approved

L3 FITNESS STUDIES (L3PEF)

This course follows on from L2PED, L2PES

The course will have a mixture of theoretical and practical components, as well as some work placement in the schools Latitude 36 fitness hub to support usage with the junior students. The course and standards can be designed/modified to suit needs of the students, especially if some students have an interest in furthering their ambitions for the fitness industry as a career.

This course will support students who wish to consider careers in sport and recreation, coaching, and personal training.

Students in this course will be working towards

18 credits that are internally assessed and 0 credits that are externally assessed

Course endorsement is not possible in L3 Fitness Studies

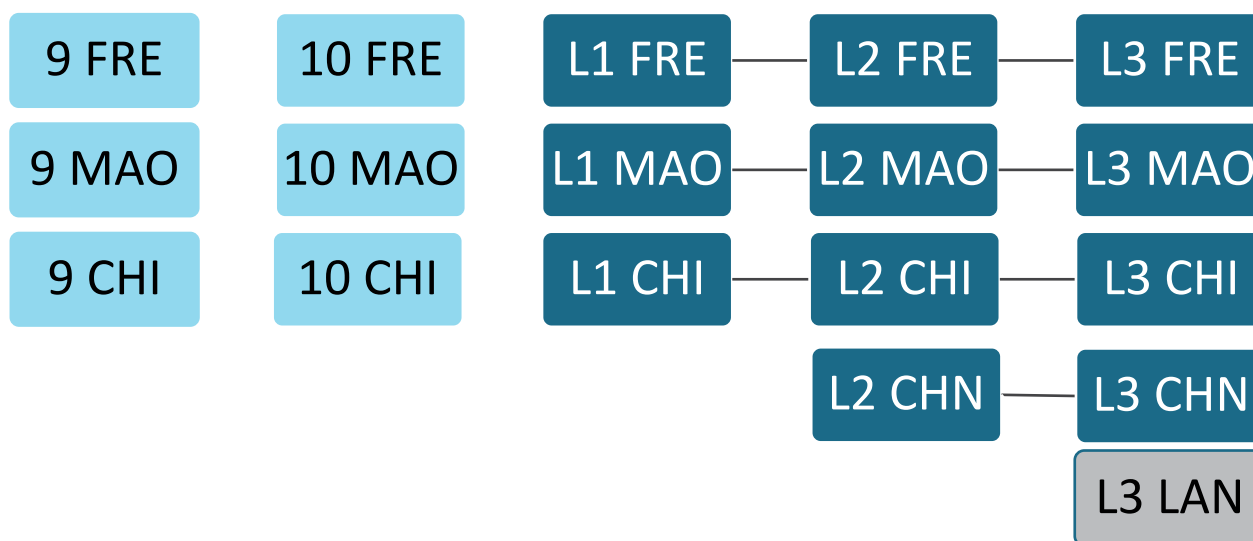
This course is not university approved

GLOBAL STUDIES - LANGUAGES

Head of Faculty – Ms Laura Curwood

Ext 879

lcurwood@lbc.school.nz



Y9 MĀORI (9MAO)

This course leads to 10MAO

This is an introductory course in the Māori language for all students, no matter their previous study. Students will learn how to introduce themselves and communicate about their family and school in everyday conversations. Students will experience Maori culture and customs both in the classroom and the community.

Teacher in charge – Ms Laura Curwood

Y9 FRENCH (9FRE)

This course leads to 10FRE

This course is an introduction to French language, for those with little or no previous study in the subject. It is based around the AIM method of second language acquisition and uses stories, music and gestures to develop fluency and confidence in communication. During the course students will learn to present simple plays and to perform their own productions entirely in French. There is a strong initial emphasis on listening and speaking, but written literacy is also an important element of the programme.

Teacher in charge - Ms Heather Jenkins

Y9 CHINESE (9CHI)

This course leads to 10CHI

This is an introduction to Chinese language, culture and customs. Topics will be based on familiar, everyday situations. The emphasis initially will be on speaking and listening, but students will also be introduced to written characters. There is an additional opportunity to take **HSK test** (an international standardized test of Chinese language proficiency) towards the end of the year.

Teacher in charge - Ms Xiaoman Shao

Y10 MĀORI (10MAO)

This course leads to L1MAO

This course builds on the oral and written skills introduced in Year 9. The focus is on building students' knowledge of vocabulary and sentence structures, and confidently using them in conversations. Topics covered include Home Life, Going to Town and Sport and Leisure. Involvement in Kapa Haka is expected.

Teacher in charge - Ms Laura Curwood

Y10 FRENCH (10FRE)

This course leads to L1FRE

This course continues with the AIM method of second language acquisition introduced at Year 9 and integrates a programme of gestures, music and drama to support the development of French language skills. The focus is on extending students' vocabulary and confidence in using French exclusively (both orally and in written form) to communicate within the classroom.

Teacher in charge - Ms Heather Jenkins

Y10 CHINESE (10CHI)

This course leads to L1CHI

This course builds on the oral and listening skills introduced in Year 9. The focus is to improve and extend students' language skills of listening, speaking, reading and writing. Students will learn to understand and construct simple texts in Chinese. Knowledge of daily life and culture in China is also integrated into the language content of the course. There is an additional opportunity to take **HSK test**(an international standardized test of Chinese language proficiency)towards the end of the year.

Teacher in charge - Ms Xiaoman Shao

L1 MĀORI (L1MAO)

This course follows on from 10MAO and leads to L2MAO

Students will continue to develop all language skills in different contexts. There is a focus on being able to converse in Te Reo Māori, using basic language. Students' knowledge of Māori culture will develop. Completion of this course is essential for students wishing to study Te Reo Maori at Level 2 and 3. Involvement in Kapa Haka is expected.

Teacher in charge - Ms Laura Curwood

Students in this course will be working towards

18 credits that are internally assessed and 6 credits that are externally assessed

Course endorsement is possible in L1 Māori

This course leads to a university approved course

L1 FRENCH (L1FRE)

This course follows on from 10FRE and leads to L2FRE

This course continues the development of linguistic skills in French with equal focus on listening, speaking, reading and writing. Preparation for assessment against NCEA Level 1 standards is an important aspect of this year. Evaluation of students' skills in speaking and writing French will be based on the development of portfolios of work. Students wishing to do Level 1 French must have studied it in Year 10.

Teacher in charge - Ms Heather Jenkins

Students in this course will be working towards

10 credits that are internally assessed and 10 credits that are externally assessed

Course endorsement is possible in L1 French

This course leads to a university approved course

L1 CHINESE (L1CHI)

This course follows on from 10CHI and leads to L2CHI

This course is aimed at non native speakers of Chinese who already have a prior knowledge of basic Chinese. The focus is on extending students' ability to communicate effectively in Chinese, with equal emphasis on reading, writing, speaking and listening. Students will also study more about Chinese culture and customs as an integral part of the course.

Teacher in charge - Ms Xiaoman Shao

Students in this course will be working towards

14 credits that are internally assessed and 10 credits that are externally assessed. Course endorsement is possible in L1 Chinese

This course leads to a university approved course

L2 MĀORI (L2MAO)

This course follows on from L1MAO and leads to L3MAO

This course focuses on being able to express more in-depth ideas and opinions in Te Reo Māori. Knowledge of grammar and vocabulary is also extended. Students will be expected to use spoken Te Reo more often in the classroom. Completion of this course is essential for students wishing to study Te Reo Māori at Level 3. Involvement in Kapa Haka is expected.

Teacher in charge - Ms Laura Curwood

Students in this course will be working towards

16 credits that are internally assessed and 6 credits that are externally assessed

Course endorsement is possible in L2 Māori

This course leads to a university approved course

L2 FRENCH (L2FRE)

This course follows on from L1FRE and leads to L3FRE

This course focuses on further improving students' fluency in spoken French and their ability to understand and express more sophisticated ideas in written French. Knowledge of grammar and vocabulary is also extended. We continue to include the immersion approach to create a lively, creative and, above all, totally French environment. Preparation for assessment against NCEA Level 2 standards is an important aspect of this year. Evaluation of students' skills in speaking and writing French will be based on the development of portfolios of work. Students will also have the opportunity to research and write two reports on a global issue of interest, and gain an extra 9 credits at NCEA Level 2.

Teacher in charge - Ms Heather Jenkins

Students in this course will be working towards

14 credits that are internally assessed and 10 credits that are externally assessed

9 extra optional credits that are internally assessed

Course endorsement is possible in L2 French

L2 CHINESE (L2CHI)

This course follows on from L1CHI and leads to L3CHI

This course is aimed at non native speakers of chinese. This course further develops students' fluency in spoken Chinese whilst extending their ability to understand and express themselves at a higher level in written Chinese. Grammar and vocabulary extension will also be an integral part of the course to enable students to develop ideas at a more sophisticated level.

Teacher in charge - Ms Xiaoman Shao

Students in this course will be working towards

10 credits that are internally assessed and 14 credits that are externally assessed

Course endorsement is possible in L2 Chinese

This course leads to a university approved course.

L2 CHINESE FOR NATIVE SPEAKERS (L2CHN)

This course leads to L3CHN

The course is designed for Chinese native speaking students who can benefit from further development of Chinese language competency and culture. It will also focus on critical thinking and question-answering strategies aimed at high achievement in NCEA. Classes will be taught twice in a six-day cycle after school.

Teacher in charge - Ms Xiaoman Shao

Students in this course will be working towards

10 credits that are internally assessed and 14 credits that are externally assessed

Course endorsement is possible in L2 Chinese for Native Speakers

This course leads to a university approved course

L3 MĀORI (L3MAO)

This course follows on from L2MAO

This course covers a wide range of Māori political and social issues, as well as Māori performing arts. At this level students should be confidently writing and speaking in Te Reo Māori. Students will be involved in leading activities both in the school and the community. Involvement in Kapa Haka is expected.

Teacher in charge - Ms Laura Curwood

Students in this course will be working towards

16 credits that are internally assessed and 6 credits that are externally assessed

Course endorsement is possible in L3 Māori

This course is university approved

L3 FRENCH (L3FRE)

This course follows on from L2FRE

Further development of competency in reading, listening to, writing and speaking French is the goal of this whole year's course. Students are introduced to complex language and grammatical structures in a variety of media, including an example of French literature. They also focus on skills that will assist them to communicate spontaneously, such as how to debate an issue, deliver a critique, negotiate, relate an event and outline a point of view. Deepening student understanding of French culture is also an aim of the course. Preparation for assessment against NCEA Level 3 standards is an important aspect of this year. Evaluation of students' skills in speaking and writing French will be based on the development of portfolios of work. Students will also have the opportunity to research and write two reports on a global issue of interest, and gain an extra 9 credits (at NCEA Level 2).

Teacher in charge - Ms Heather Jenkins

Students in this course will be working towards

14 credits that are internally assessed and 10 credits that are externally assessed

9 optional Level 2 credits that are internally assessed

Course endorsement is possible in L3French

This course is university approved.

L3 CHINESE (L3CHI)

This course follows on from L2CHI

This course aims to increase fluency, comprehension and confidence in authentic language situations, as well as understanding of the culture differences. Students learn to communicate sophisticated information and opinions through more complex text types and authentic materials based on current social issues and popular topics among young people in China.

Teacher in charge - Ms Xiaoman Shao

Students in this course will be working towards

14 credits that are internally assessed and 10 credits that are externally assessed

Course endorsement is possible in L3 Chinese

This course is university approved.

L3 CHINESE FOR NATIVE SPEAKERS (L3CHN)

This course follows on from L2CHN

This course is designed for Chinese native speaking students who can benefit from further development of Chinese language competency and culture. It will also focus on higher level critical thinking and question-answering strategies aimed at high achievement in NCEA. Classes will be taught twice in a six-day cycle after school.

Teacher in charge - Ms Xiaoman Shao

Students in this course will be working towards

14 credits that are internally assessed and 10 credits that are externally assessed

Course endorsement is possible in L3 Chinese Native for Native Speakers

This course is university approved

L3 LANGUAGES FOR NATIVE SPEAKERS (L3LAN)

This course is intended for native speakers of languages that are assessed as part of L3 NCEA (German, Japanese, Korean, Samoan, Spanish). It will prepare students with the necessary skills to succeed in the external exam. This course is once per week after school and is taken as a co-curricular opportunity.

Teacher in charge – Mrs Jayne Jones

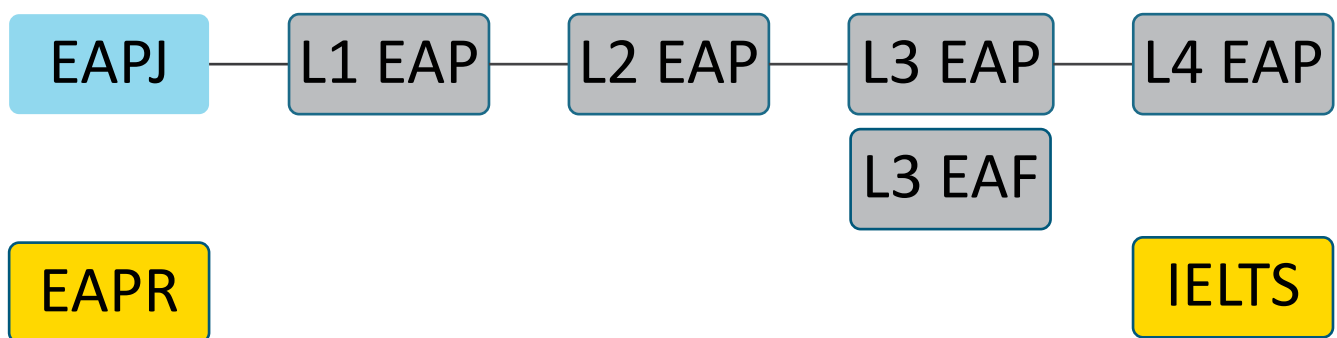
Students in this course will be working towards

10 credits that are externally assessed (internal assessments may be offered at the discretion of the teacher)

Course endorsement is only possible in L3 Languages for Native Speakers if additional discretionary credits are gained.

This course is university approved

GLOBAL STUDIES – ENGLISH FOR ACADEMIC PURPOSES



NOTE: The EAP courses are designed for English language learners, to develop their general language skills and prepare students for the increased demands of academic English. Courses will be tailored to suit individuals' needs to maximise students' progress. All students will be assessed internally throughout the year.

RECEPTION ENGLISH FOR ACADEMIC PURPOSES (EAPR)

This course leads to higher levels of EAP and access to mainstream subjects

This course is a transition course designed for English language learners who have Beginners' / post-Beginners' English skills on arrival to LBC. The focus is on developing students' English language skills, as well as their confidence in language use, so that they can go on to access what is taught in mainstream subjects. The course has a strong focus on building general vocabulary and simple grammatical structures required for further studies at LBC.

Teacher in charge - Ms Laura Curwood

JUNIOR ENGLISH FOR ACADEMIC PURPOSES (EAPJ)

This course leads to senior EAP courses

This course is a multi-level course designed for junior English language learners (Year 9 and 10). The focus is on developing students' English language skills for general and academic purposes. The course is topic-based with an emphasis on learning about a range of global issues and their effects on New Zealand the students' home countries.

Teacher in charge - Ms Laura Curwood

L1 ENGLISH FOR ACADEMIC PURPOSES (L1EAP)

This course follows on from EAPJ and leads to L2EAP

This course is designed for English language learners at Pre-Intermediate level. The focus is on developing students' reading, writing, speaking, listening and vocabulary skills for academic purposes. The course aims to support students' work in other subjects across the curriculum.

Teacher in charge - Ms Laura Curwood

Students in this course will be working towards

25 credits that are internally assessed and 0 credits that are externally assessed

Course endorsement is not possible in L1 English for Academic Purposes

This course does not lead to a university approved course

L2 ENGLISH FOR ACADEMIC PURPOSES (L2EAP)

This course follows on from L1EAP and leads to L3EAP

This course is designed for English language learners at intermediate level. The focus is on extending students' academic English by using topics, text and task types they will encounter in other subjects. The course will also continue to develop students' general English language skills. For those that require it, successful completion of this course can meet the requirements of Literacy Level 1 (NCEA).

Teacher in charge - Ms Laura Curwood

Students in this course will be working towards

25 credits that are internally assessed and 0 credits that are externally assessed

12 credits towards Level 1 Literacy

Course endorsement is not possible in L2 English for Academic Purposes

This course does not lead to a university approved course

L3 ENGLISH FOR ACADEMIC PURPOSES (L3EAP)

This course follows on from L2EAP and leads to L4EAP

This course aims to equip students with the English skills necessary for academic study at senior school level. The focus is on developing more advanced language skills required for academic writing, information-seeking and formal speaking.

Teacher in charge - Ms Laura Curwood

Students in this course will be working towards

20 credits that are internally assessed and 0 credits that are externally assessed

12 credits towards Level 1 Literacy

Course endorsement is not possible in L3 English for Academic Purposes.

L3 ENGLISH FOR ACADEMIC FOUNDATION (L3EAF)

This course can follow on from L2 or L3 EAP.

This course focuses on practical and relevant university preparation topics and skills to prepare students for the transition to a foundation course or other chosen further study.

Teacher in charge - Ms Laura Curwood

Students in this course will be working towards

Course endorsement is not possible in L3 English for Academic Foundation

This course does not lead to a university approved course.

L4 ENGLISH FOR ACADEMIC PURPOSES (L4EAP)

Successful completion of the Advanced Reading and Writing (NCEA) components of this course will meet the literacy requirements for New Zealand University Entrance. The focus of this course is to equip students with the Advanced level of academic English required by those aiming to go on to university. Areas of study include research projects and analysis of academic texts based on global issues.

Teacher in charge - Ms Laura Curwood

Students in this course will be working towards

22 credits that are internally assessed and 0 credits that are externally assessed

Course endorsement is not possible in L4 English for Academic Purposes

IELTS PREPARATION COURSE (IELTS)

This course is designed for English language learners who are studying short term at Long Bay College. It will prepare students for all four skills assessed in the International English Language Testing System (IELTS). Students who wish to take the exam can do so at the local IELTS centre.

Teacher in charge – Mrs Jayne Jones

Course endorsement is not possible in IELTS

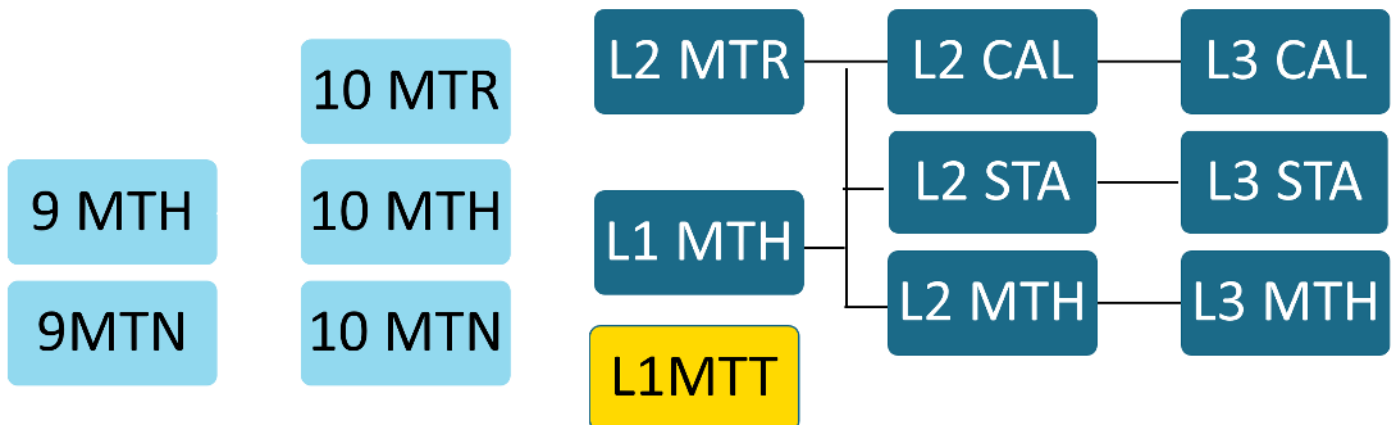
This course is not university approved

MATHEMATICS

Head of Faculty – Mr Matthew Gleeson

Ext 873

mgleeson@lbc.school.nz



Y9 MATHEMATICS (9MTH)

This course leads to 10MTH

Using entrance data as a baseline, students will progress through subsequent national curriculum levels.

Teacher in charge - Mr Matthew Gleeson

Y9 MATHEMATICS TARGETED (9MTN)

This course leads to 10MTH

This course is in response to students' needs and teacher recommendations. This course offers additional numeracy support to students who are struggling to achieve in mainstream classes.

Teacher in charge - Mr Matthew Gleeson

Y10 MATHEMATICS (10MTH)

This course leads to L1MTH

Students will engage in thinking mathematically and statistically in a range of meaningful contexts, across all strands of the New Zealand Curriculum, at an appropriate level.

Teacher in charge - Mr Matthew Gleeson

Y10 MATHEMATICS ENRICHMENT (10MTR)

This course leads to L2MTH, L2STA, L2CAL

Our most able Year 10 students will complete this 1-year Level 1 course, sitting a combination of internal and external assessments. A scientific calculator and electronic device (laptop or tablet) are required for this course.

Teacher in charge - Mr Matthew Gleeson

Y10 MATHEMATICS TARGETED (10MTN)

This course leads to 10MTH

This course is in response to students' needs and teacher recommendations. This course offers additional numeracy support to students who are struggling to achieve in mainstream classes.

Teacher in charge - Mr Matthew Gleeson

L1 MATHEMATICS (L1MTH)

This course follows on from 10MTH and leads to L2MTH, L2STA, L2CAL

All students will complete four compulsory internal assessments and then go on to choose external standards.

Teacher in charge - Mr Matthew Gleeson

Students in this course will be working towards

17 credits that are internally assessed and 4 credits that are externally assessed OR 14 credits that are internally assessed and 8 credits that are externally assessed depending on student choice

7 credits towards Level 1 Literacy
21 or 22 credits towards Numeracy

Course endorsement is possible in L1 Mathematics

This course leads to a university approved course

L1 MATHEMATICS TRANSITION (L1MTT)

This course is designed for English language learners. They will attempt various achievement standards from NCEA level 1 and 2 according to their mathematical and literary abilities.

Teacher in charge - Mr Matthew Gleeson

This course does not lead to a university approved course

L2 MATHEMATICS ENRICHMENT (L2MTR)

This course follows on from L1MTR and leads to L2/3 MTH, STA, CAL

This course is designed to enrich and widen the knowledge base of our most able Year 11 students.

Teacher in charge - Mr Matthew Gleeson

Students in this course will be working towards

13 credits that are internally assessed and 4 credits that are externally assessed

4 credits towards Level 1 Literacy
17 credits towards Numeracy

Course endorsement is possible in L1 Mathematics Enrichment

This course leads to a university approved course

L2 CALCULUS (L2CAL)

This course follows on from L1MTH, L2MTR and leads to L3CAL, L3MTH

This course will provide students with the necessary skills to progress to the Level 3 calculus course. An appropriate selection of internal and external Level 2 standards will be offered.

Teacher in charge - Mr Marius Sandu

Students in this course will be working towards

9 credits that are internally assessed and 9 credits that are externally assessed 18 credits towards Numeracy

Course endorsement is possible in L2 Calculus

This course leads to a university approved course

L2 MATHEMATICS (L2MTH)

This course follows on from L1 MTH and leads to L3MTH, L3STA

This course builds on the knowledge and skills gained in Year 11. An appropriate selection of Level 2 standards will be offered. This course will provide students with the necessary skills to progress to the L3 Mathematics course.

Teacher in charge - Mr Matthew Gleeson

Students in this course will be working towards

13 credits that are internally assessed and 4 credits that are externally assessed 4 credits towards Level 1 Literacy
17 credits towards Numeracy

Course endorsement is possible in L2 Mathematics

This course leads to a university approved course

L2 STATISTICS (L2STA)

This course follows on from L1MTH, L2MTR and leads to L3STA

This course builds on the knowledge and skills gained in Year 11. This course will provide students with the necessary skills to progress to the Level 3 Statistics course.

Teacher in charge - Ms Natalie Vandersande

Students in this course will be working towards

17 credits that are internally assessed and 4 credits that are externally assessed 17 credits towards Level 1 Literacy
21 credits towards Numeracy
2R credits to UE literacy (R/W/B)

Course endorsement is possible in L2 Statistics

This course leads to a university approved course

L3 CALCULUS (L3CAL)

This course follows on from L2CAL

This course is appropriate for students wishing to continue in mathematics, physical sciences, engineering or any field in which the analysis of mathematical relationships is an important tool. Topics including algebra, trigonometry and calculus are extended from Level 2 Mathematics and new ones such as complex numbers and differential equations are introduced.

Teacher in charge - Mr Marius Sandu

Students in this course will be working towards

7 credits that are internally assessed and 17 credits that are externally assessed 24 credits towards Numeracy

Course endorsement is possible in L3 Calculus

This course is university approved

L3 MATHEMATICS (L3MTH)

This course follows on from L2MTH, L2STA, L2CAL

The topics covered by this course are based on aspects of both statistics and algebra. This course gives students the opportunity to gain 14 credits at Level 3 from the approved university entry list.

Teacher in charge - Mr Matthew Gleeson

Students in this course will be working towards

16 credits that are internally assessed and 4 credits that are externally assessed

4 credits towards Level 1 Literacy

20 credits towards Numeracy

Course endorsement is possible in L3 Mathematics

This course is university approved

L3 STATISTICS (L3STA)

This course follows on from L2STA

This course is appropriate for students wishing to continue in biological and social sciences, medicine, commerce and management or any field in which the collection, analysis and interpretation of quantitative data is important.

Teacher in charge – Ms Natalie Vandersande

Students in this course will be working towards

12 credits that are internally assessed and 8 credits that are externally assessed

8 credits towards Level 1 Literacy

20 credits towards Numeracy

Course endorsement is possible in L3 Statistics

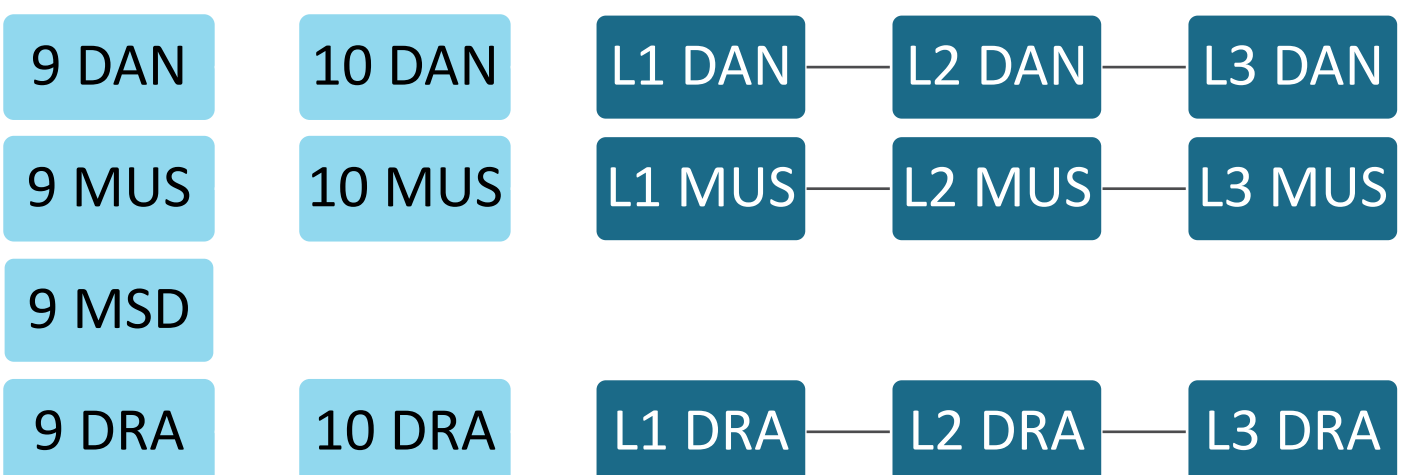
This course is university approved

PERFORMING ARTS

Head of Faculty –Mr Brendan Perkins

Ext 894

bperkins@lbc.school.nz



Y9 DANCE (9DAN)

This course leads to 10DAN

Year 9 Dance aims to introduce basic skills that students need to perform and choreograph dance. Theory and reflective discussion will be incorporated into each topic and support each new skill as it is learned. Appropriate dance clothing is compulsory. Dance students will develop self-management and interpersonal skills, while building self-confidence and exploring their creative self. This course is suitable for all students, beginners to experienced.

Teacher in charge - Ms Kiaya Lupi

Y9 DRAMA (9DRA)

This course leads to 10DRA

This half year course is designed to expand students' abilities to communicate with, understand and be aware of others and of themselves. Basic acting, movement, voice and character techniques are used to teach skills useful in classroom and extracurricular areas. This course includes mime, movement, character work and performance to other groups.

Teacher in charge - Mr Paul Fannon

Y9 MUSIC (9MUS)

This course leads to 10MUS

This course is an introductory exploration of Music consisting of the following components: introduction to classroom ensemble performance, music theory, music technology, developing listening skills (rhythmic and pitch recognition), music knowledge and appreciation. Students will play keyboard, guitar, drum kit and also gain experience on a brass or woodwind instrument.

Teacher in charge - Mr Hadley Ronayne

Y9 MUSIC (9MSD)

This course leads to 10MUS

This course covers content related to the creation and production of music using digital platforms and electronic instruments. Students will demonstrate the skills acquired and their knowledge of standard audio processing concepts by producing 3 projects according to briefs supplied by the teacher.

Teacher in charge - Mr Tim Atkinson

Y10 DANCE (10DAN)

This course leads to L1 DAN

Year 10 Dance builds and supports learning of basic techniques and skills to perform, choreograph and understand dance. During the semester students will view, discuss and experiment with different genres and styles. Foundation skills such as posture/alignment and focus will be key ideas learnt. Thematic creation's and performance of their own dances are important aspects of this course along with a class dance to demonstrate basic ensemble skills. Appropriate dance clothing is required.

Teacher in charge - Ms Kiaya Lupi

Y10 DRAMA (10DRA)

This course leads to L1DRA

This course stresses creativity, communication, group work and technical areas such as movement, voice, improvisation and working from scripts. The course includes elements of: Improvisation, Devised Theatre, an introduction to Greek Theatre, Melodrama and Physical Theatre

Teacher in charge - Mr Brendan Perkins

Y10 MUSIC (10MUS)

This course leads to L1MUS

This course is divided into five sections: • Performance: solo and group performances • Song writing and composition using Sibelius and Soundtrap software • Aural perception: Rhythmic and melodic transcription, chord recognition, timbral recognition • Music Theory: the fundamentals of music theory. Use of Musition theory training software • Musical Knowledge: a study of selected musical works and genres

Teacher in charge - Mr Tim Atkinson

L1 DANCE (L1DAN)

This course follows on from 10DAN and leads to L2DAN

This course builds on the skills and techniques learnt in the previous year. Students will further develop their ability to perform, choreograph and demonstrate knowledge of dance genres effectively. Students will learn a range of dance styles and will be given the opportunity to work individually and as part of a group. Appropriate dance clothing is required. Students will perform in the dance show.

Teacher in charge - Ms Kiaya Lupi

Students in this course will be working towards

16 credits that are internally assessed and 4 credits that are externally assessed

4 credits towards Level 1 Literacy

Course endorsement is possible in L1 Dance

This course leads to a university approved course

L1 DRAMA (L1DRA)

This course follows on from 10DRA and leads to L2DRA

Students build on the techniques learned in the previous year, including elements and conventions of theatre and use these in class work and performance. They study a theatre style and undertake an acting and technical role in the class production. Knowledge and understanding of their work is tested in written feedback and in external Achievement Standards. Trips to live theatre performances are a requirement of one external exam.

Teacher in charge - Mr Paul Fannon

Students in this course will be working towards

18 credits that are internally assessed and 4 credits that are externally assessed

22 credits towards Level 1 Literacy

Course endorsement is possible in L1 Drama

This course leads to a university approved course

L1 MUSIC (L1MUS)

This course follows on from 10 MUS and leads to L2MUS

This course is divided into the following areas: Performance – Students are required to perform pieces of music on their chosen performance instrument/voice, as a soloist. They also have the option to perform as a member of a group. Composition – Students learn composing skills and compose two original pieces of music. Music Works – Students study 2 set works (Hallelujah Chorus and Bohemian Rhapsody) Score Reading: Students identify, describe and demonstrate understanding and application of theory and musical elements used in music scores.

All students must be learning a musical instrument through formal tuition either privately or through the school itinerant programme.

Teacher in charge - Mr Hadley Ronayne

Students in this course will be working towards

22 credits that are internally assessed and 4 credits that are externally assessed

10 credits towards Level 1 Literacy

Course endorsement is possible in L1 Music

This course leads to a university approved course

L2 DANCE (L2DAN)

This course follows on from L1DAN and leads to L3DAN

This course builds on the skills learnt in Level 1. Students must rely on their own skills to choreograph a dance for a group of dancers communicating and understanding specific intentions. They will continue to develop their skills of performing in a group and as a soloist. Analysing their own work and the work of others becomes increasingly important this year. Appropriate dance clothing is required. Students will perform in the dance show.

Teacher in charge - Ms Kiaya Lupi

Students in this course will be working towards

18 credits that are internally assessed and 4 credits that are externally assessed

4 credits towards Level 1 Literacy

Course endorsement is possible in L2 Dance

This course leads to a university approved course

L2 DRAMA (L2DRA)

This course follows on from L1DRA and leads to L3DRA

This subject is offered to students who have a strong interest in the Performing Arts. The course includes taking part in the class production, the study of a theatre form, and the study of acting technique. Emphasis will be placed on the practical and performance aspects of Drama. Students will be expected to take part in class workshop situations. Written reflection and analysis are important parts of the course. Trips to live theatre performances are a requirement for the external exam.

Teacher in charge - Mr Brendan Perkins

Students in this course will be working towards

13 credits that are internally assessed and 8 credits that are externally assessed

21 credits towards Level 1 Literacy

13R, 4W, 4 B credits to UE literacy (R/W/B)

Course endorsement is possible in L2 Drama

This course leads to a university approved course

L2 MUSIC (L2MUS)

This course follows on from L1MUS and leads to L3MUS

This course is divided into four sections: Section A: Students are required to perform pieces of music on their chosen performance instrument/voice, as a soloist and have the option to perform as a member of a group. Section B: Students are required to compose a selection of music pieces and create an instrumentation. Section C: Students are required to describe the theoretical basis of a variety of music scores and to demonstrate aural/listening skills. Section D: Students study music works of varying styles and eras which they describe and analyse. Students must be learning a musical instrument through formal tuition either privately or through the school itinerant programme.

Teacher in charge - Mr Tim Atkinson

Students in this course will be working towards

20 credits that are internally assessed and 8 credits that are externally assessed

8 credits towards Level 1 Literacy

Course endorsement is possible in L2 Music

This course leads to a university approved course

L3 DANCE (L3DAN)

This course follows on from L2DAN

This intensive and creative course builds on the skills learned in Level 2. Students will produce a dance of their own and learn a repertoire of contrasting dances from different genres to display the varying techniques. This course has a large written component in which students will develop their analysis skills further to analyse their own learning and performance practices as well as their own and others' choreography. Appropriate dance clothing is required.

Students will perform in the dance show.

Teacher in charge - Ms Kiaya Lupi

Students in this course will be working towards

18 credits that are internally assessed and 4 credits that are externally assessed

4 credits towards Level 1 Literacy

4B credits to UE literacy (R/W/B)

Course endorsement is possible in L3 Dance

This course is university approved

L3 DRAMA (L3DRA)

This course follows on from L2DRA

This is a course for people who love performing! It is a concentrated, fast-moving course which builds on skills developed in the Level 2 Drama course. The emphasis is placed on the students' personal growth and knowledge of themselves. Initiative and self-motivation are important requirements for this course. Related technical areas will also be covered, with students having 'hands on' experience in their own production decisions. The course is of a very practical nature and active participation is essential. Performance (both group and solo) is an integral part. Written reflection and analysis support all tasks. Trips to live theatre performances are a requirement for the external exam.

Teacher in charge - Mr Brendan Perkins

Students in this course will be working towards

14 credits that are internally assessed and 4 credits that are externally assessed

18 credits towards Level 1 Literacy

9R, 4W, 4B credits to UE literacy (R/W/B)

Course endorsement is possible in L3 Drama

This course is university approved

L3 MUSIC (L3MUS)

This course follows on from L2MUS

Students get to choose from a range of standards that reflect their strengths and interests. Course is divided into: **PERFORMANCE:** Perform 2 programmes of music as a featured soloist and/or 1 programme as a member of a group.

COMPOSE / ARRANGE: Create portfolios of music compositions including song writing AS91849) and/or arrangements of specific pieces of music. Songs will be recorded in the school's recording studio. **RESEARCH:** In

depth research into a Music topic of student's choice. **EXTERNAL STANDARDS:** -Students study advanced harmonic and tonal conventions in a range of scores.

Teacher in charge - Mr Hadley Ronayne

Students in this course will be working towards

22 credits that are internally assessed and 4 credits that are externally assessed

6 credits towards Level 1 Literacy

6R credits to UE literacy (R/W/B)

Course endorsement is possible in L3 Music

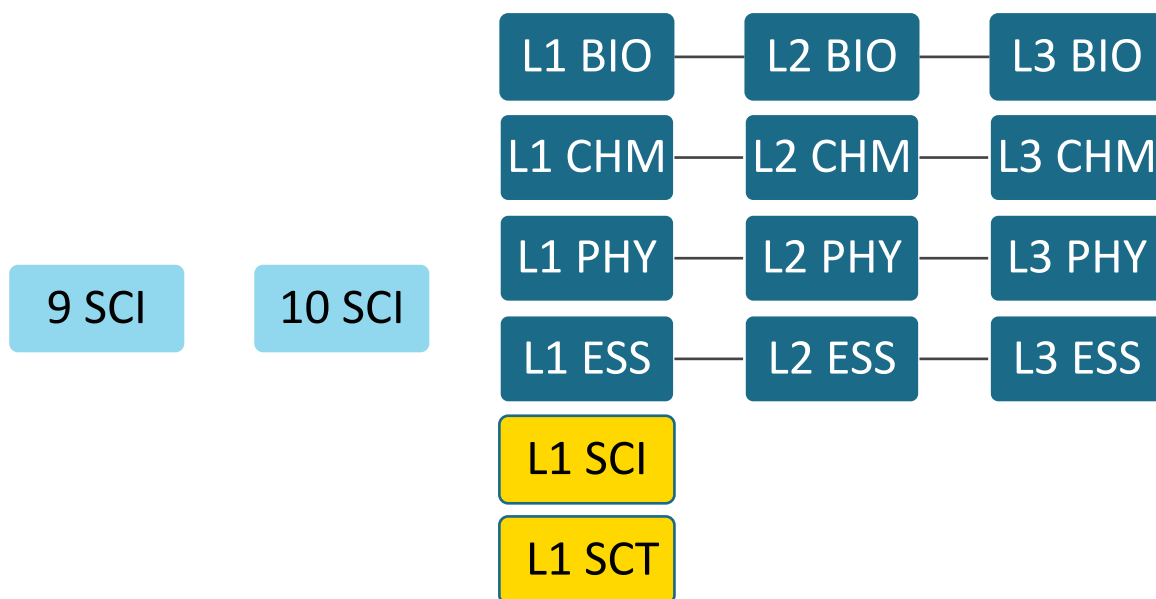
This course is university approved

SCIENCE

Head of Faculty – Mrs Samantha Lewis

Ext 871

slewis@lbc.school.nz



Y9 SCIENCE (9SCI)

This course leads to 10SCI

This course progresses from a general introduction to Scientific processes to some very important scientific principles in Biology, Chemistry, Physics and Earth and Space.

Teacher in charge - Mrs Samantha Lewis

Y10 SCIENCE (10SCI)

This course leads to L1SCI, L1BIO, L1CHM, L1ESS, L1PHY

This course continues to explore a range of important scientific concepts. This course covers all four key strands of Science including Biology, Chemistry, Physics and Earth and Space Science.

Teacher in charge - Mrs Samantha Lewis

L1 GENERAL SCIENCE (L1SCI)

This course builds on the concepts taught at Years 9 and 10 Science. It covers ideas relating to Biology, Chemistry, Earth and Space Science and practical investigation skills. It is completely internally assessed and targeted at students who have not achieved success in 9SCI and 10SCI.

Teacher in charge - Mrs Samantha Lewis

Students in this course will be working towards

20 credits that are internally assessed and 0 credits that are externally assessed

Course endorsement is not possible in L1 General Science

This course does not lead to a university approved course

8 credits towards Level 1 Literacy

8 credits towards Numeracy

L1 SCIENCE TRANSITION (L1SCT)

This course leads to L2BIO, L2CHM, L2ESS, L2PHY

This is a course designed for English language learners who would like to study Level 2 and 3 Science subjects in following years but do not yet have the English ability to be successful in them. It comprises of 3 external standards in Biology, Chemistry and Physics and 1 internal for science investigation skills. Students will learn science whilst developing their English ability.

Teacher in charge - Mrs Samantha Lewis

Students in this course will be working towards

4 credits that are internally assessed and 12 credits that are externally assessed

4 credits towards Level 1 Literacy

4 credits towards Numeracy

Course endorsement is possible in L1 Science Transition

This course leads to a university approved course

L1 BIOLOGY (L1BIO)

This course follows on from 10SCI and leads to L2BIO

Biology is a core science subject where students will develop an understanding of fundamental biological concepts including Anatomy, Zoology, Botany, and Genetics and Evolutionary Principles. Students will learn to apply knowledge of biology to explain aspects of the natural world.

Teacher in charge - Ms Hayley Summers

Students in this course will be working towards

8 credits that are internally assessed and 11 credits that are externally assessed

11 credits towards Level 1 Literacy

Course endorsement is possible in L1 Biology

This course leads to a university approved course

L1 CHEMISTRY (L1CHM)

This course follows on from 10SCI and leads to L2CHM

Chemistry is a core science subject where students will develop an understanding of fundamental chemical concepts including organic chemistry, chemical reactivity, and the use of chemistry in technology. Students will learn to apply knowledge of chemistry to explain aspects of the material world.

Teacher in charge - Mr Brad Simons

Students in this course will be working towards

6 credits that are internally assessed and 12 credits that are externally assessed

2 credits towards Level 1 Literacy

4 credits towards Numeracy

Course endorsement is possible in L1 Chemistry

This course leads to a university approved course

L1 EARTH AND SPACE SCIENCE (L1ESS)

This course follows on from 10SCI and leads to L2ESS

Earth and Space Science is a core science subject where students will develop an understanding of fundamental astronomical and geological concepts including astronomical cycles and events, investigating local geological features and formation, the carbon cycle and associated global environmental effects. Students will learn to apply knowledge of Earth and Space to explain aspects of the natural world.

Teacher in charge - Mrs Rebecca Pringle

Students in this course will be working towards

20 credits that are internally assessed and 0 credits that are externally assessed

16 credits towards Level 1 Literacy

4 credits towards Numeracy

Course endorsement is not possible in L1 Earth and Space

This course leads to a university approved course

L1 PHYSICS (L1PHY)

This course follows on from 10SCI and leads to L2PHY

Physics is a core science subject where students will develop an understanding of fundamental physical concepts including mechanics, electricity and magnetism and waves. Students will learn to apply knowledge of Physics to explain aspects of the natural world.

Teacher in charge - Mr Stefanus van Emmenis

Students in this course will be working towards

8 credits that are internally assessed and 12 credits that are externally assessed

4 credits towards Level 1 Literacy
16 credits towards Numeracy

Course endorsement is possible in L1 Physics

This course leads to a university approved course

L2 EARTH AND SPACE SCIENCE (L2ESS)

This course follows on from L1ESS and leads to L3ESS

Students will develop an understanding of fundamental astronomical and geological concepts including star characteristics and life cycle, planetary and solar system formation, volcanoes, earthquakes and local surface feature formation as well as investigating a global environmental issue. Students will learn to apply knowledge of Earth and Space to explain aspects of the material world. This course is designed to prepare students for tertiary study in one of the Sciences.

Teacher in charge - Mrs Rebecca Pringle

Students in this course will be working towards

12 credits that are internally assessed and 8 credits that are externally assessed

20 credits towards Level 1 Literacy
4 credits towards Numeracy

Course endorsement is possible in L2 Earth and Space

This course leads to a university approved course

L2 BIOLOGY (L2BIO)

This course follows on from L1BIO and leads to L3BIO

This course builds on Level 1 Biology knowledge. Students will develop an understanding of fundamental biological concepts including Zoology, Cytology, Ecology, Genetics and Evolutionary Principles. Students will learn to apply knowledge of biology to explain aspects of the natural world. This course is designed to prepare students for tertiary study in the Biological Sciences.

Teacher in charge - Ms Hayley Summers

Students in this course will be working towards

7 credits that are internally assessed and 12 credits that are externally assessed

19 credits towards Level 1 Literacy

Course endorsement is possible in L2 Biology

This course leads to a university approved course

L2 CHEMISTRY (L2CHM)

This course follows on from L1CHM and leads to L3CHM

This course builds on Level 1 Chemistry knowledge. Students will develop an understanding of fundamental chemical concepts including atomic structure and bonding, organic chemistry, and chemical reactivity. Students will learn to apply knowledge of chemistry to explain aspects of the material world. This course is designed to prepare students for tertiary study in one of the Sciences.

Teacher in charge - Mr Brad Simons

Students in this course will be working towards

7 credits that are internally assessed and 13 credits that are externally assessed

13 credits towards Level 1 Literacy

4 credits towards Numeracy

Course endorsement is possible in L2 Chemistry

This course leads to a university approved course

L2 PHYSICS (L2PHY)

This course follows on from L1PHY and leads to L3PHY

This course builds on Level 1 Physics knowledge. Students will develop an understanding of fundamental physical concepts including mechanics, electricity, and modern physics. Students will learn to apply knowledge of physics to explain aspects of the material world. This course is designed to prepare students for tertiary study in one of the Sciences.

Teacher in charge - Mr Stefanus van Emmenis

Students in this course will be working towards

14 credits that are internally assessed and 12 credits that are externally assessed

22 credits towards Level 1 Literacy

16 credits towards Numeracy

Course endorsement is possible in L2 Physics

This course leads to a university approved course

L3 BIOLOGY (L3BIO)

This course follows on from L2BIO

This subject builds on Level 2 Biology knowledge. Students will develop an understanding of fundamental biological concepts including Homeostasis, Evolution of New Zealand's Endemic Species, Human Evolution, Plant and Animal Behaviour and Applications of Biotechnology. This course is designed to prepare students for tertiary study in the Biological Sciences.

Teacher in charge - Ms Hayley Summers

Students in this course will be working towards

6 credits that are internally assessed and 13 credits that are externally assessed

19 credits towards Level 1 Literacy

3R, 16B credits to UE literacy (R/W/B)

Course endorsement is possible in L3 Biology

This course is university approved

L3 CHEMISTRY (L3CHM)

This course follows on from L2CHM

This course builds on Level 2 Chemistry knowledge. Students will develop an understanding of fundamental chemical concepts including thermochemistry, organic chemistry, implications of chemistry in the real world. Students will learn to apply knowledge of chemistry to explain aspects of the material world. This course is designed to prepare students for tertiary study in one of the Sciences.

Teacher in charge - Mr Brad Simons

Students in this course will be working towards

7 credits that are internally assessed and 10 credits that are externally assessed

Course endorsement is possible in L3 Chemistry

12 credits towards Level 1 Literacy

4 credits towards Numeracy

4W credits to UE literacy (R/W/B)

This course is university approved

L3 EARTH AND SPACE SCIENCE (L3ESS)

This course follows on from L2ESS

This course builds on L2ESS knowledge covering both practical and theoretical concepts of Earth and Space systems. It is an academic course which includes topics in ocean, atmosphere and astronomy. This is suited to students wishing to study courses such as Environmental Science, Marine Biology, Climate Science and Geography.

Teacher in charge - Mrs Rebecca Pringle

Students in this course will be working towards

12 credits that are internally assessed and 8 credits that are externally assessed

Course endorsement is possible in L3 Earth and Space Science

20 credits towards Level 1 Literacy

4 credits towards Numeracy

4W, 16B credits to UE literacy (R/W/B)

This course is university approved

L3 PHYSICS (L3PHY)

This course follows on from L2PHY

This course builds on Level 2 Physics knowledge. Students will develop an understanding of fundamental physical concepts including mechanics, electricity, waves and modern physics. Students will learn to apply knowledge of physics to explain aspects of the material world. This course is designed to prepare students for tertiary study in one of the Sciences.

Teacher in charge - Mr Stefanus van Emmenis

Students in this course will be working towards

6 credits that are internally assessed and 16 credits that are externally assessed

Course endorsement is possible in L3 Physics

22 credits towards Level 1 Literacy

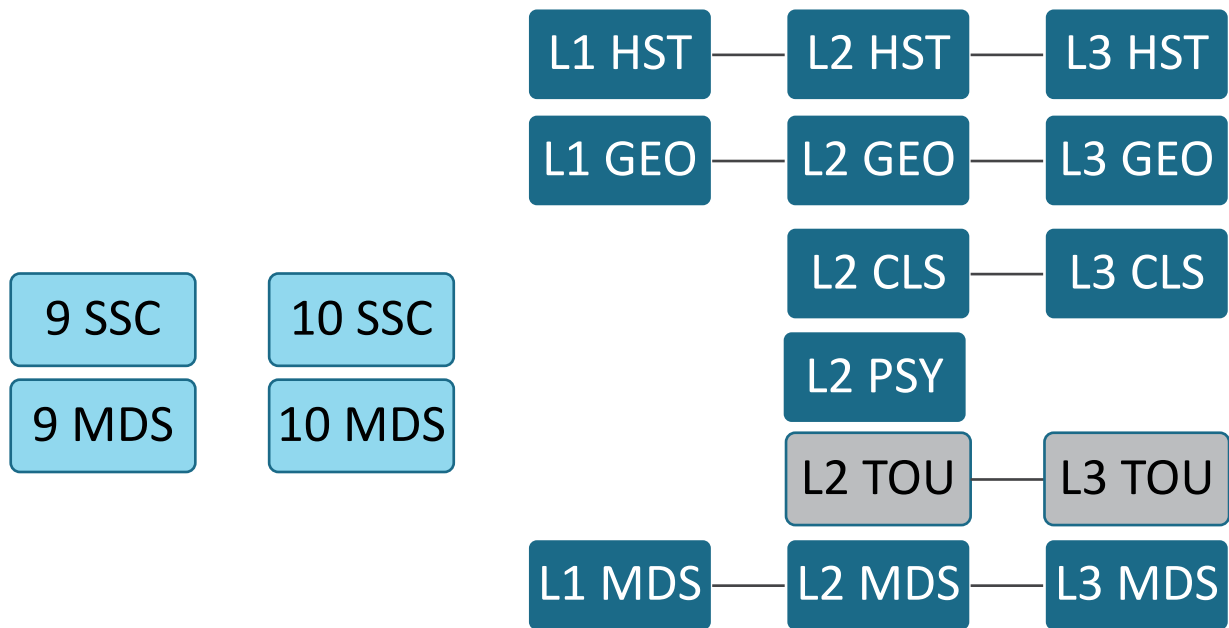
This course is university approved

SOCIAL SCIENCES

Head of Faculty – Mr Dean Thompson

Ext 863

dthompson@lbc.school.nz



Y9 SOCIAL SCIENCE (9SSC)

This course leads to 10SSC

The Year 9 Social Science course draws from the Social Sciences and the Humanities. The course explores topics from History, Geography and Classical Studies. The course is designed to stimulate curiosity and imagination, in alignment with NZC Levels 4-5 of the Social Sciences strands. The course builds student general knowledge, literacy and research skills.

Teacher in charge – Mr Dean Thompson

Y9 MEDIA STUDIES (9MDS)

This course leads to 10MDS

This is an introductory course where students will start to explore how teenagers are represented in television and film. They will also explore how a media industry, such as Disney, influences and impacts on society. Students will learn communication theory and how to apply this to practical work. This course also has a significant production element. Students are challenged to cut, edit and produce their own film trailer.

Teacher in charge - Ms Adrienne Bishop

Y10 SOCIAL SCIENCE (10SSC)

This course leads to L1HST, L1GEO, L1MDS

The Year 10 Social Science course draws from the Social Sciences and the Humanities. The course explores topics from History, Geography and Classical Studies. The course is designed to stimulate curiosity and imagination, in alignment with Level 4-6 of the Social Sciences strands. The course builds student general knowledge, literacy and research skills.

Teacher in charge – Mr Dean Thompson

Y10 MEDIA STUDIES (10MDS)

This course leads to L1 MDS

In this course students will explore the work of a director, looking at their style of film making and how their personal lives impact their body of work. They will analyse bias in journalism, producing their own front page stories. They will explore the advertising industry and its dynamic impact on shaping our society. This course also has a significant production element where students are challenged to plan, design and produce their own documentary. Students may write their own screenplay or journalism article.

Teacher in charge - Ms Adrienne Bishop

L1 GEOGRAPHY (L1GEO)

This course follows on from 10SSC and leads to L2GEO

This year focuses on 2 content-based topics: • Extreme natural events - tsunamis • Geographic skills. Current and global geographic issues will be studied, geographical skills such as mapping and important geographic concepts will be learned, and students will complete an individual research assignment. Assessment will be by an external examination and internal assessments.

Teacher in charge - Mrs Justine McIntosh

Students in this course will be working towards

10 credits that are internally assessed and 8 credits that are externally assessed

14 credits towards Level 1 Literacy

3 credits towards Numeracy

Course endorsement is possible in L1 Geography

This course leads to a university approved course

L1 HISTORY (L1HST)

This course follows on from 10SSC and leads to L2HST

Students will develop an understanding of the causes, consequences and perspectives of events of significance to New Zealanders through the study of 20th Century topics that have shaped the lives of people and society. Topics may include: • World War Two: origins, key battles, the home front and the atomic bomb • Racism and civil rights in the USA (1954-68) • Brown Power in New Zealand (1970s): Ngā Tamatoa and the Polynesian Panthers • The Korean War.

Teacher in charge - Mr Terry Chee

Students in this course will be working towards

12 credits that are internally assessed and 8 credits that are externally assessed

20 credits towards Level 1 Literacy

Course endorsement is possible in L1 History

This course leads to a university approved course

L1 MEDIA STUDIES (L1MDS)

This course follows on from 10MDS and leads to L2MDS

This year students will continue to explore the Mass Media. They will develop key skills in close reading a scene from a film, looking at the director's use of camerawork, lighting, sound and costume to explore an idea. They will also be following how an issue or event is explored by print, television and digital media (internet/social networking sites). Students will be looking at the regulations attached to broadcasting and the impact of social media on companies revenues. A large portion of this course is dedicated to practical film making where students are challenged to plan, design and produce a short film which requires a significant time commitment in Term 2.

Teacher in charge - Ms Adrienne Bishop

Students in this course will be working towards

15 credits that are internally assessed and 8 credits that are externally assessed

14 credits towards Level 1 Literacy

Course endorsement is possible in L1 Media Studies

This course leads to a university approved course

L2 CLASSICS (L2CLS)

This course follows on from L1ENG, L1ENE, L1HST and leads to L3CLS

Classical Studies is about the great civilisations of Ancient Greece and Ancient Rome. Topics to be studied will be taken from: Greek Social Life, Greek Mythology, The Persian Wars, Homer's Odyssey, Athenian Architecture and Sculpture.

Teacher in charge - Mr Dean Thompson

Students in this course will be working towards

10 credits that are internally assessed and 8 credits that are externally assessed

18 credits towards Level 1 Literacy

10R, 8B credits to UE literacy (R/W/B)

Course endorsement is possible in L2 Classics

This course leads to a university approved course

L2 GEOGRAPHY (L2GEO)

This course follows on from L1GEO and leads to L3GEO

Geography Level 2 focuses on 3 major areas of study: • Differences in development • Geographic skills • Natural environments. Also studied are the development of important geographic concepts and the understanding of contemporary geographic issues and problems. The 3 day field trip to the Tongariro Volcanic Centre is an integral part of the course and students must be willing and able to go on this field trip.

Teacher in charge - Mrs Justine McIntosh

Students in this course will be working towards

11 credits that are internally assessed and 8 credits that are externally assessed

19 credits towards Level 1 Literacy

5 credits towards Numeracy

Course endorsement is possible in L2 Geography

This course leads to a university approved course

L2 HISTORY (L2HST)

This course follows on from L1HST and leads to L3HST

In this course students will study 3 main topics (subject to change): • Nuclear issues in New Zealand • Conflict in Vietnam 1945-1975 • The Russian Revolution. Success in this subject requires strong literacy skills to cope with the reading, writing and research components.

Teacher in charge - Mr Terry Chee

Students in this course will be working towards

15 credits that are internally assessed and 4 credits that are externally assessed

19 credits towards Level 1 Literacy

14R, 4W credits to UE literacy (R/W/B)

Course endorsement is possible in L2 History

This course leads to a university approved course

L2 MEDIA STUDIES (L2MDS)

This course follows on from L1MDS and leads to L3MDS

In this course students will develop their keen interest in the media, from films to the internet, and its use to reflect and affect the social, political, historical and economic climate of the time in which they were made. Within this course we will look at the manipulation of the press, the influence of social media, how narrative techniques drive directorial decision making in films and how our heroes and villains reflect the socio-political concerns of the time. A large portion of this course is dedicated to practical film making where students are challenged to plan, design and produce a short film which requires a significant time commitment in Term 2.

Teacher in charge - Ms Adrienne Bishop

Students in this course will be working towards

14 credits that are internally assessed and 7 credits that are externally assessed

21 credits towards Level 1 Literacy

7B credits to UE literacy (R/W/B)

Course endorsement is possible in L2 Media Studies

This course leads to a university approved course

L2 PSYCHOLOGY (L2PSY)

This course leads to L3 PSY (L3 Course to be offered in 2022.)

In this course students will develop an understanding of the Science and study of Psychology. This includes methods of psychological research, how psychological theory is applied in practice and the ethical principles underpinning psychological practice in Aotearoa/New Zealand.

Teacher in charge – Mr Dean Thompson

Students in this course will be working towards

All credits are internally assessed.

Course endorsement is not possible in L2 Psychology.

This course leads to a university approved course

L2 TOURISM (L2TOU)

This course follows on from L1HST, L1GEO, L1MDS and leads to L3TOU

Tourism is a constantly growing industry in New Zealand and therefore it is useful to achieve some of the Tourism Unit Standards before going on to study the subject at a tertiary institution.

Teacher in charge - Mr Dean Thompson

Students in this course will be working towards

20 credits that are internally assessed and 0 credits that are externally assessed

Course endorsement is not possible in L2 Tourism

This course does not lead to a university approved course

L3 CLASSICS (L3CLS)

This course follows on from L2CLS

Classical Studies is about the great civilisations of Ancient Greece and Ancient Rome. Topics to be studied will be taken from the following: Alexander the Great, Virgil's Aeneid, Roman Art and Architecture, Roman Religion.

Teacher in charge - Mr Dean Thompson

Students in this course will be working towards

8 credits that are internally assessed and 12 credits that are externally assessed

20 credits towards Level 1 Literacy

Course endorsement is possible in L3 Classics

This course is university approved

L3 GEOGRAPHY (L3GEO)

This course follows on from L2GEO

The course covers 3 major areas: • The study of natural processes at work in the local environment. Coastal processes are the focus of our work. Local area field work is completed during this topic • Tourism as an example of a cultural process in New Zealand. This is studied with a 3 day trip to Rotorua • Selecting and applying skills and important geographic ideas. Field work is an integral part of the course and assessment. Students must be able to go on these field trips.

Teacher in charge - Mrs Justine McIntosh

Students in this course will be working towards

11 credits that are internally assessed and 8 credits that are externally assessed

Course endorsement is possible in L3 Geography

This course is university approved

19 credits towards Level 1 Literacy

5 credits towards Numeracy

3R, 8B credits to UE literacy (R/W/B)

L3 HISTORY (L3HST)

This course follows on from L2HST

Students study two topics in depth. The first topic is Conflict in Afghanistan. This charts the troubled history of Afghanistan from the Soviet Invasion in 1979-1989, to 9/11 and New Zealand's military involvement in the region today. The second topic looks at Weimar and Nazi Germany, 1918-45. Additionally, students conduct research on a topic of their choice as part of the internal assessment. This provides the opportunity to focus on an area of history that is of particular interest to the student.

Teacher in charge - Mr Terry Chee

Students in this course will be working towards

15 credits that are internally assessed and 6 credits that are externally assessed

Course endorsement is possible in L3 History

This course is university approved

21 credits towards Level 1 Literacy

6B credits to UE literacy (R/W/B)

L3 MEDIA STUDIES (L3MDS)

This course follows on from L3MDS

In this course students will develop their keen interest in the media as an industry and its cause and effect relationship with its audience. We will focus on exploring the way a media text can be read in different ways dependent upon the audience's own experience of the world around them. Within this course we will look at how aspects of a director's style influence the reading of a text, aspects of genre and how the controls of a media industry reflect the products on the market. A large portion of this course is dedicated to practical film making where students are challenged to plan, design, and produce an 8 minute short film which requires a significant time commitment in Term 1.

Teacher in charge - Ms Adrienne Bishop

Students in this course will be working towards

13 credits that are internally assessed and 8 credits that are externally assessed

Course endorsement is possible in L3 Media Studies

This course is university approved

21 credits towards Level 1 Literacy

L3 TOURISM (L3TOU)

This course follows on from L2TOU

This course is the second half of the National Certificate in Tourism Level 2. Tourism electives can be done on their own without the full certificate being taken, as can Tourism Core Skills.

Teacher in charge – Mr Dean Thompson

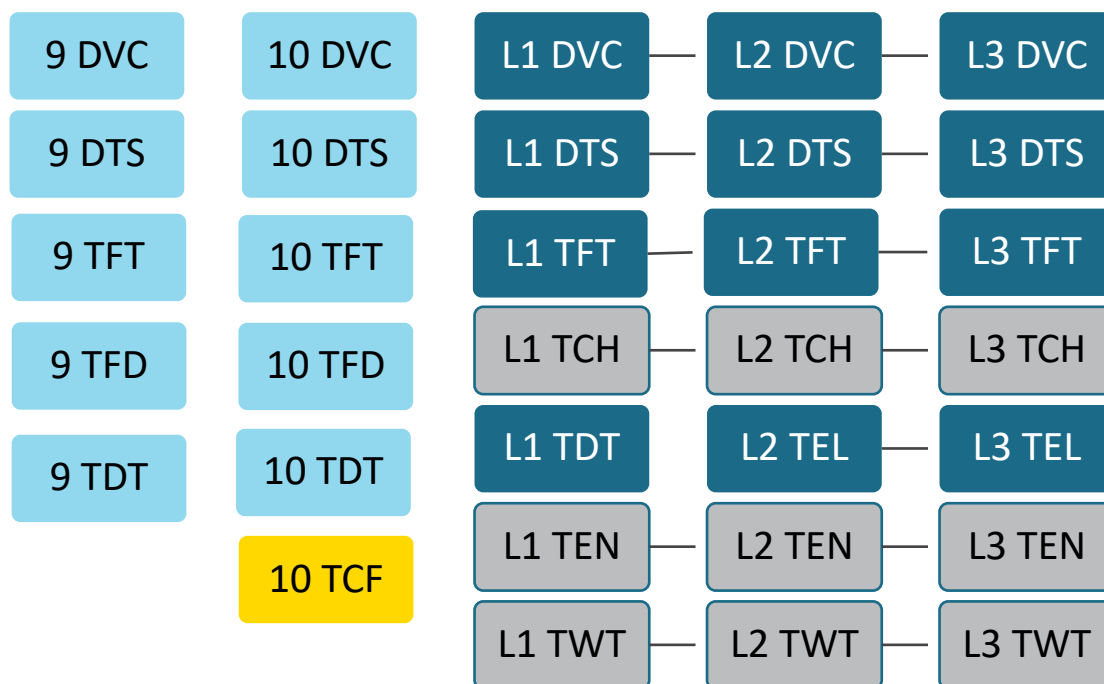
Students in this course will be working towards

21 credits that are internally assessed and 0 credits that are externally assessed

Course endorsement is not possible in L3 Tourism

This course is not university approved

TECHNOLOGY



Head of Faculty – Mr Steve Dymock

Ext 829

sdymock@lbc.school.nz

Y9 DESIGN AND VISUAL COMMUNICATION (9DVC)

This course leads to 10DVC

A one semester course that begins with the application of basic theory and practical skills needed in both architecture and product design.

Development towards the key areas includes: • Understanding of design ideation and refinement • Understanding of design context and real-world problem solving • Design sketching, crating, rendering • Architecture case studies • Engineering and technical drawing content • Communication design

High end Technology skills: • Adobe Software • Autodesk Software • 3D Printer • Laser cutter • Model making/prototyping

Teacher in charge - Ms Jana Durdevic

Y9 DIGITAL TECHNOLOGY STUDIES (9DTS)

This course leads to 10DTS

This one semester course focuses on Web and App Development. It also covers computer science theory and provides an introduction to Python programming.

Web and App development includes: • Human Computer Interaction (HCI) using Nielsen's Usability Heuristics • Design Principles and Elements • File Management Procedures • Web design using HTML and CSS (Brackets, Sublime Text, NotePad ++)
• Wireframing and Mockups (Prototyping) • App Development using Thinkable
Computer Science and an introduction to Python Programming • Data Representation (Understanding Binary) • Error Control Encoding (Check Digits and Parity) • Algorithms (Search and Sort) • Python Programming

Teacher in charge - Mrs Michelle Gallagher

Y9 FASHION TECHNOLOGY (9TFT)

This course leads to 10TFT

Students use the Technological process to design and make basic items while they learn and improve their construction skills. They use all of the learnt knowledge for their final assignment, designing and making a device holder or type of bag. Students also learn about fabric properties and experiment with sewing techniques. They become familiar with using sewing machines and drafting basic patterns and are encouraged to be creative.

Teacher in charge - Ms Sharon O'Dowd

Y9 FOOD TECHNOLOGY (9TFD)

This course leads to 10TFD

With a strong focus on health and safety, this course consists of theory driven practical tasks designed to develop students' skills in executing a range of recipes. These will cater for diverse cultural and nutritional needs with a great emphasis placed on teamwork.

Teacher in charge - Mrs Robyn Hunn

Y9 DESIGN & TECHNOLOGY (9TDT)

This course leads to 10TDT

This course provides a practical introduction into Hard Materials and Electronics through specifically designed 'design and make' project tasks.

Teacher in charge - Mr Steve Dymock

Y10 DESIGN AND VISUAL COMMUNICATION (10DVC)

This course leads to L1DVC

A one semester course that extends both practical and theory skills. Those students not involved in year 9 DVC gain knowledge, whilst acting as a refresher for those who did Yr 9 DVC.

Further development towards the key areas includes: • Understanding of design ideation and refinement • Understanding of design context and real-world problem solving • Design sketching, crating, rendering • Architecture case studies • Engineering and technical drawing content • Communication design. High end Technology skills; • Adobe Software • Autodesk Software • 3D Printer • Laser cutter • Model making/prototyping

Teacher in charge - Ms Jana Durdevic

Y10 DIGITAL TECHNOLOGY STUDIES (10DTS)

This course leads to L1DTS

This one semester course focuses on 3D Modelling, Game Design and advanced Python programming.

3D Modelling, Game Design and Advanced Python programming will include: • Planning (Pseudocode) • Python Programming (inputs, outputs, sequencing, loops and selection)- using iteration to design, develop, create and test (Debug) a computer program • 3D Modelling using Blender • 2D Game Design – GameMaker or Construct • Project Management (*Gantt Charts*).

Teachers in charge - Mrs Michelle Gallagher & Mr Tony Bailey

Y10 FASHION TECHNOLOGY (10TFT)

This course leads to L1TFT

A focus on two areas of Textile design: The First Assignment: Research and design casual tops (t shirts/ sweatshirts and hoodies) with a positive life message. Next, create the garment. The message can be applied using screenprinting or other techniques.

The Second Assignment: A focus on interior design. This will look at designing an interior to meet a given brief, then making a textile item related to it.

Teacher in charge - Ms Sharon O'Dowd

Y10 FOOD TECHNOLOGY (10TFD)

This course leads to L1TFD

Small/Short projects used to develop and challenge practical skills and ability. Includes: • Theory to build required subject knowledge • Understanding dietary requirements • Introduction to service IQ unit standards • High Tea, theory and product development • Developing recipes and plating

Teacher in charge - Mrs Robyn Hunn

Y10 DESIGN & TECHNOLOGY (10TDT)

This course leads to L1TEL, L1TWT, L1TEN

This course consists of a combination of Hard Materials and Electronic based projects. Students will learn about the theory of materials and basic electronics along with designing and making products that incorporate all of these areas.

Teacher in charge - Mr Steve Dymock

FOUNDATION TECHNOLOGY (10TCF)

This course leads to L1DVC, L1DTS, L1TFD, L1TFT, L1TEL

The Foundation course is designed for English language learners intending to transition to a regular technology subject. The course focuses on basic technology skills, learning about the technology design process which underlies all technology subjects, and building vocabulary for the subjects.

Teacher in charge - Ms Sharon O'Dowd

L1 DESIGN AND VISUAL COMMUNICATION (L1DVC) λ

This course follows on from 10DVC and leads to L2DVC

There are two areas of study: • Spatial Design - architecture, landscape graphics, perspective drawing • Product Design - engineered products, consumer products, media products and associated drawing systems. A selected body of work will be promoted to an audience.

Teacher in charge - Ms Jana Durdevic

Students in this course will be working towards

10 credits that are internally assessed and 9 credits that are externally assessed

6 credits towards Numeracy

Course endorsement is possible in L1 Design and Visual Communication

This course leads to a university approved course

L1 DIGITAL TECHNOLOGY STUDIES (L1DTS)

This course follows on from 10DTS and leads to L2DTS.

Students will learn how to: • Develop a digital media outcome to manage data (*using either MS Access, FileMaker or Airtable*) using the process of iteration throughout design, development and testing • Effectively apply design elements and principles • Address relevant implications in their outcomes, *e.g. understanding the correct ethical procedures when producing, using and storing data* • Create a website using HTML and CSS using agile methodologies (Scrum) • Create a flexible and robust computer program using the Python programming language whilst following python conventions • Test and debug in an organised way with expected, boundary and unexpected data • Demonstrate understanding of Human Computer Interaction using Nielsen's Heuristics (*3 hour external paper*). **Students will also have the opportunity to complete an industry certification in either MOS (Microsoft Office), Adobe or MTA (Microsoft Technology Associate).**

Teacher in charge - Mrs Michelle Gallagher

Students in this course will be working towards

12 credits that are internally assessed and 3 credits that are externally assessed

11 credits towards Level 1 Literacy

Course endorsement is possible in L1DTS

This course leads to a university approved course

L1 DESIGN AND TECHNOLOGY (L1TDT)

This course follows on from 10TDT, 10DTS and leads to L2TDT and L2TEL

This course is a University approved, Achievement Standard course in which students design and build individual projects. Students will design and make projects using wood, metals, plastics and electronics.

Teacher in charge - Mr Steve Dymock

Students in this course will be working towards

16 credits that are internally assessed and 4 credits that are externally assessed

Course endorsement is possible in L1 Design and Technology

This course leads to a university approved course

L1 ENGINEERING (L1TEN)

This course follows on from 10TDT and leads to L2TEN

The course consists of a combination of written and practical work. Students will be assessed on their competence in using tools and machinery in the Engineering workshop. Understanding of materials and safe working practices will also be assessed. This course is designed for students interested in taking up an apprenticeship in any of the related fields

Teacher in charge - Mr David Scott

Students in this course will be working towards

21 credits that are internally assessed and 0 credits that are externally assessed

Course endorsement is not possible in L1 Engineering

This course does not lead to a university approved course

L1 FABRIC TECHNOLOGY (L1TFT)

This course follows on from 10TFT and leads to L2TFT

Students will start with a real world style client brief, and using the technological design process develop creative outcomes which address the needs of the brief. They will continue to build their skill levels and knowledge in textile related fields. In Level 1, they learn about and reflect on the principles and elements of design.

Teacher in charge - Ms Sharon O'Dowd

Students in this course will be working towards

16 credits that are internally assessed and 4 credits that are externally assessed

8 credits towards Level 1 Literacy

Course endorsement is possible in L1 Fabric Technology

This course leads to a university approved course

L1 WOOD TECHNOLOGY (L1TWT)

This course follows on from 10TDT and leads to L2TWT

This is a NCEA Unit Standard Technology course using wood-based products as a materials medium. Students will gain credits for success with design, brief development, individual production of a prototype, and documentation of processes. This course is designed as a skills and knowledge prerequisite for Level 2 Wood Technology. An article of furniture will be made to take home.

Teacher in charge - Mr Jeff Evans

Students in this course will be working towards

18 credits that are internally assessed and 0 credits that are externally assessed

Course endorsement is not possible in L1 Wood Technology

This course does not lead to a university approved course

L1 HOSPITALITY (L1TFD)

This course follows on from 10TFD and leads to L2TCH

This is a practical based course which includes units of learning recognised and linked with Polytechnics and Hospitality Institute Standards. Students will also be expected to complete university approved standards. This course is ideal for those seeking employment in this field or going on to advanced studies in Chef work, Hotel Management, Tourism or starting their own catering business. Students will be expected to cater for functions.

Teacher in charge - Mrs Robyn Hunn

Students in this course will be working towards

22 credits that are internally assessed and 0 credits that are externally assessed

Course endorsement is not possible in L1 Hospitality. This course does not lead to a university approved course

L2 DESIGN AND VISUAL COMMUNICATION (L2DVC) λ

This course follows on from L1DVC and leads to L3DVC

Two, half year projects from a student driven perspective. Brief, context and specifications are researched extensively by students before design ideation and refinement begins. Approximately 1/3 of course content is skill development where exercises and “real life learning” takes place. During the year, students will delve into important design principles through 2 projects. Although both will be product or spatial related, the design context aims to solve 2 very different world problems (new learning will take place within each assessment).

Teacher in charge - Ms Jana Durdevic

Students in this course will be working towards

19 credits that are internally assessed and 7 credits that are externally assessed

6 credits towards Level 1 Literacy

Course endorsement is possible in L2 Product and Spatial Design

This course leads to a university approved course

L2 DIGITAL TECHNOLOGY STUDIES (L2DTS)

This course follows on from L1DTS and leads to L3DTS

This course offers more advanced tuition in project management, conceptual design, web/ game design, python programming and databases.

Students will learn how to: • Plan and create a relational database OR plan and create an advanced computer program using Python and applying relevant conventions • Develop a conceptual design for an outcome using relevant conventions • Create a digital media outcome (*website using HTML5 and CSS OR another digital outcome of their choice, e.g. game*) using project management tools • use feedback from end users/ stakeholders and information from testing procedures to improve their outcome • Address relevant implications • Use the process of iteration • Students will also look at advanced concepts in CS (computer science) such as computer security, encryption, error control, complexity and tractability and AI. **Students will have the opportunity to complete an industry certification in either MOS (Microsoft Office), Adobe or MTA (Microsoft Technology Associate).**

Teacher in charge - Mrs Michelle Gallagher

Students in this course will be working towards

14/16 credits that are internally assessed and 3 credits that are externally assessed (*6 optional*)

6 credits towards Level 1 Literacy

Course endorsement is possible in L2DTS

This course leads to a university approved course

L2 ELECTRONICS (L2TEL)

This course follows on from L1TEL and leads to L3TEL

This course is a University approved, Achievement Standard course in which students design and build individual projects and circuit boards, whilst digital (written) assessments are submitted as evidence for NCEA. Advanced Electronics theory and understanding is developed alongside the use of Eagle CAD and Picaxe programming software to a higher level.

All assessments require students to learn how to: • Develop an Advanced Electronics Outcome through testing, trailing and use of debugging techniques • Plan the development of an outcome through planning tools such as Gantt Charts, Journals etc • Address Relevant Implications • Use the process of iteration • Use data and calculations (Ohms Law) to determine component choices • Build quality PCBs (printed circuit boards) • Program Picaxe micro-controllers

Teacher in charge - Mr Steve Dymock

Students in this course will be working towards

16 credits that are internally assessed and 4 credits that are externally assessed

7 credits towards Level 1 Literacy

Course endorsement is possible in L2 Electronics

This course leads to a university approved course

L2 ENGINEERING (L2TEN)

This course follows on from L2TEN and leads to L3TEN

This course is designed for students intending to take up an apprenticeship in any of the related fields. They will work towards following build instructions to complete an individual project. Students will need to demonstrate skills and knowledge in practical, written and graphic assignments.

Teacher in charge - Mr David Scott

Students in this course will be working towards

22 credits that are internally assessed and 0 credits that are externally assessed

Course endorsement is not possible in L2 Engineering

This course does not lead to a university approved course

L2 FABRIC TECHNOLOGY (L2TFT)

This course follows on from L1TFT and leads to L3TFT

Students will complete two main assignments; the first one is practical skills based. The main project is based on selecting a client and an opportunity. Working to a design brief they design and make a textile outcome to meet the client's needs and specifications. For the external report they will investigate the issue of sustainability as it relates to fashion and textiles.

Teacher in charge - Ms Sharon O'Dowd

Students in this course will be working towards

16 credits that are internally assessed and 4 credits that are externally assessed

4 credits towards Level 1 Literacy

Course endorsement is possible in L2 Fabric Technology

This course leads to a university approved course

L2 WOOD TECHNOLOGY (L2TWT)

This course follows on from L1TWT and leads to L3TWT

This is a full NCEA Unit Standard Technology course using wood-based products as a materials medium. Students will gain credits for success with design, brief development, individual production of a prototype and documentation of processes. An article of furniture will be made to take home.

Teacher in charge - Mr Jeff Evans

Students in this course will be working towards

24 credits that are internally assessed and 0 credits that are externally assessed

Course endorsement is not possible in L2 Wood Technology

This course does not lead to a university approved course

L2 HOSPITALITY (L2TCH)

This course follows on from L1TCH / L1TFD and leads to L3TCH,

This is a practical based course which includes units of learning recognised and linked with Polytechnics and Hospitality Institute Standards. This course is ideal for those seeking employment in this field or going on to advanced studies in Chef work, Hotel Management, Tourism or starting their own catering business.

Teacher in charge - Mrs Robyn Hunn

Students in this course will be working towards

20 credits that are internally assessed and 0 credits that are externally assessed

Course endorsement is not possible in L2 Hospitality without additional Achievement Standards.

Optional achievement standards are available in Level 2.

L2TCH can lead to a university approved course if the Level 2 optional Achievement Standards are chosen.

L3 DESIGN AND VISUAL COMMUNICATION (L3DVC) λ

This course follows on from L2DVC

A single, full year project from a student driven perspective. Brief, context and specifications are researched extensively by students before design ideation and refinement begins. After refinement students have the option to delve in authentic technical drawing or promote their work in a formal exhibition space. Students will use a range of modes and media to communicate design ideas. This includes the laser cutter, 3D printer, sketching tablets, CAD, model making and more.

Teacher in charge - Ms Jana Durdevic

Students in this course will be working towards

10 credits that are internally assessed and 6 credits that are externally assessed

Course endorsement is possible in L3 Product and Spatial Design

This course is university approved

L3 DIGITAL TECHNOLOGY STUDIES (L3DTS)

This course follows on from L2DTS

Students will learn how to: • Apply user experience methodologies to develop a design for a digital technologies outcome • Use complex techniques to develop a relational database OR digital media outcome (*website, apps, VR experience, game etc*) OR computer program • Use complex processes to develop a digital technologies outcome, using recognised and appropriate project management tools and techniques (*Agile methodologies, Kanban and Scrum boards*) • Students will also study areas of CS (computer science)- complexity and tractability, computer vision, computer graphics, formal language and network communication protocols. **Students will have the opportunity to complete an industry certification in either MOS (Microsoft Office), Adobe or MTA (Microsoft Technology Associate).**

Teacher in charge - Mrs Michelle Gallagher

Students in this course will be working towards

13/16 credits that are internally assessed and 3 credits that are externally assessed

Course endorsement is possible in L3DTS

This course is university approved.

22 credits towards Level 1 Literacy

4B credits to UE literacy (R/W/B)

L3 ELECTRONICS (L3TEL)

This course follows on from L2TEL

This course is a University approved, Achievement Standard course in which students use a combination of practical skills and theoretical knowledge gained through L1TEL/L2TEL to design and build more complex projects such as a 3 level Elevator. Digital (written) assessments are submitted as evidence for NCEA. Picaxe programming at a more complex level is a large part of the project through the year at Level 3.

All assessments require students to learn how to: • Develop a Complex Electronics Outcome through testing, trailing and use of debugging techniques • Project Management of an outcome through the use of planning tools such as Gantt Charts, Journals, analysis of existing technological practice • Use the process of iteration • Use data and calculations (Ohms Law/Power) to justify component selections • Build high quality PCBs (printed circuit boards)

Teacher in charge - Mr Steve Dymock

Students in this course will be working towards

12 credits that are internally assessed and 4 credits that are externally assessed

16 credits towards Level 1 Literacy

Course endorsement is possible in L3 Electronics

This course is university approved

L3 ENGINEERING (L3TEN)

This course follows on from L2TEN

This course is designed for students intending to take up an apprenticeship in any of the related fields. They will learn to use CNC, and work towards design and construction of various projects. Students will need to demonstrate skills and knowledge in practical, written and graphic assignments.

Teacher in charge - Mr David Scott

Students in this course will be working towards

20 credits that are internally assessed and 0 credits that are externally assessed

Course endorsement is not possible in L3 Engineering

This course is not university approved.

L3 FABRIC TECHNOLOGY (L3TFT)

This course follows on from L2TFT

Students will complete two assignments; the first one revolves around original pattern drafting. Students select a client and negotiate the opportunity for a real world design brief. Working with a client and stakeholders, they design and make a prototype for a textile outcome suitable for the client's needs. An external report will investigate what good design is and the criteria we judge it by.

Teacher in charge - Ms Sharon O'Dowd

Students in this course will be working towards

16 credits that are internally assessed and 4 credits that are externally assessed

8 credits towards Level 1 Literacy

Course endorsement is possible in L3 Fabric Technology

4W credits to UE literacy (R/W/B)

This course is university approved.

L3 WOOD TECHNOLOGY (L3TWT)

This course follows on from L2TWT

This is a full NCEA Unit Standard Technology course using wood-based products as a materials medium. Students will gain credits for success with design, brief development, individual production of a prototype and documentation of processes. An article of furniture will be made to take home.

Teacher in charge - Mr Jeff Evans

Students in this course will be working towards

24 credits that are internally assessed and 0 credits that are externally assessed, with an optional further 16 internally assessed credits.

Course endorsement is not possible in L3 Wood Technology

This course is not university approved.

L3 HOSPITALITY (L3TCH)

This course follows on from L2TCH and L2 TFD

This is a practical based course which includes units of learning recognised and linked with Polytechnics and Hospitality Institute Standards. This course is ideal for those seeking employment in this field or going on to advanced studies in Chef work, Hotel Management, Tourism or starting their own catering business. Students will be expected to cater for functions.

Teacher in charge - Mrs Robyn Hunn

Students in this course will be working towards

29 credits that are internally assessed and 0 credits that are externally assessed

Course endorsement is not possible in L3 Hospitality

Course endorsement is not possible in L2 Hospitality without additional Achievement Standards.

Optional achievement standards are available in Level 3.

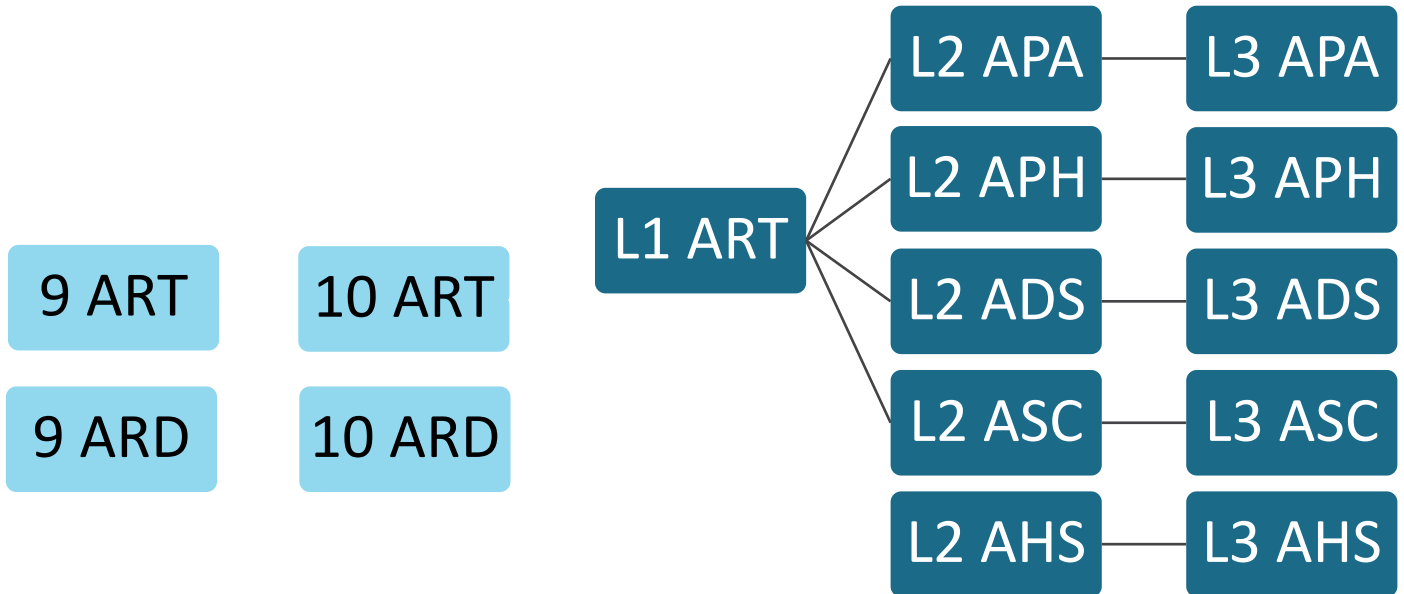
This course is university approved if the optional Achievement Standards are chosen.

VISUAL ARTS

Head of Faculty – Mrs Liese Strong

Ext 893

lstrong@lbc.school.nz



YEAR 12 & 13 PORTFOLIO VISUAL ART COURSES*

With permission of the Head of Faculty, students may take up to two practical Visual Art subjects i.e. any combination of two of the following: ADS, APA, APH or ASC. In addition to this, students could also benefit from taking AHS which will further enhance their understanding of art and artists. Students are reminded that there is a heavy homework requirement with all Visual Art subjects.

Y9 ART (9ART)

This course leads to 10ART, 10ARD

This course is focused on developing a student's understanding and technical skills in Drawing, Painting, Printmaking and Sculpture.

Students will engage in projects centralized around the themes 'Symbols of Me' and 'Under the Microscope' which will deepen a student's understanding of how to portray both the physical and the imaginary. This course will develop a student's ability to think creatively and learn important visual communication skills using art-making methods.

Teacher in charge - Mrs Liese Strong

Y9 DIGITAL ART (9ARD)

This course leads to 10ART, 10ARD

This course is focused on developing a student's understanding and technical skills in Digital Photography, Digital Illustration and Stop-motion Animation.

Students will engage in projects centralized around the theme 'Planet Earth' which will provide an opportunity to stimulate creative imagination and consider social issues. Studying this course will develop a student's ability to think creatively and learn important visual communication skills using digital art-making methods.

Teacher in charge - Mrs Liese Strong

Y10 ART (10ART)

This course leads to L1ART

This course is focused on further developing a student's understanding and technical skills in Drawing, Painting, Illustration and Printmaking.

Students will engage in projects centralized around the themes 'Movies Illustrated' and 'Feathered Beings' which will deepen a student's understanding of how to portray both the physical and the imaginary. Students will work in a wide variety of media and investigate a range of artistic approaches. Studying this course will develop a student's ability to think creatively and learn important visual communication skills using art-making methods.

Teacher in charge - Mrs Liese Strong

Y10 DIGITAL ART (10ARD)

This course leads to L1ART

This course is focused on further developing a student's understanding and technical skills in Digital Photography, Photographic manipulation, Digital Illustration, and Digital Animation using Adobe software.

Students will engage in projects centralized around the theme 'Alter Ego/ Zoomorphic' which will provide the opportunity to stimulate creative imagination and consider representations of self. Students will learn a wide range of digital techniques and will investigate a range of artistic approaches. Studying this course will develop a student's ability to think creatively and learn important visual communication skills using digital art-making methods.

Teacher in charge - Mrs Liese Strong

L1 ART (L1ART) λ

This course follows on from 10ART, 10ARD and leads to L2ADS, L2ASC, L2APA, L2APH

This innovative programme builds on the skills learnt in 10ART and 10ARD and is designed to extend a student's understanding of art-making techniques and creative processes. Students will have the opportunity to produce work using digital and traditional art making methods.

Students will develop artistic responses and interpretations to a broad theme and learn to generate, develop and clarify their ideas using a variety of art-making methods. The focus of this year is on introducing and developing conceptual ideas and skills for future Art subject specialisation.

Students are reminded that there is a heavy homework requirement with all Visual Art subjects. This course provides the essential foundations necessary for ongoing success in Senior Design, Painting, Photography and Sculpture.

Teacher in charge - Mrs Liese Strong

Students in this course will be working towards

10 credits that are internally assessed and 12 credits that are externally assessed

Course endorsement is possible in L1 Art

This course leads to a university approved course

L2 ART HISTORY (L2AHS)

This course leads to L3AHS

Art History is a subject which allows you to understand the essence of society's ideas and priorities through unravelling how this is mirrored in the lives and artworks of artists.

The topic of study for this course is "Towards Modernism" which covers 19th Century Art in France. This was a time of dramatic social and political change in world history brought on by the Age of Enlightenment, French Revolutions and the Industrial Age. Art movements from Neo-Classicism to Post Impressionism are studied to unravel artists' ideas and views as a reflection of life in this rapidly changing and tumultuous world.

Study in Art History is complementary to other subjects such as History and Classics and does not need to be taken in conjunction with Practical Art. It is however a valuable subject for Visual Art students and is especially beneficial to those students interested in studying Art, Design or Architecture at a Tertiary level.

Students choosing this course must show an ability to respond to teacher led research and written tasks in the classroom and the ability to work independently. This course requires strong analytical and literacy skills.

Teacher in charge - Mrs Liese Strong

Students in this course will be working towards

12 credits that are internally assessed and 12 credits that are externally assessed

Course endorsement is possible in L2 Art History

This course leads to a university approved course

24 credits towards Level 1 Literacy

12R, 12B credits to UE literacy (R/W/B)

L2 DESIGN (L2ADS) * λ

This course follows on from L1ART and leads to L3ADS

This course builds on design and multi-media skills and techniques that have been developed in Level 1 Art. The focus is on Graphic Design, a process of visual communication and problem solving through the use of image, layout, typography, symbols and graphic elements. Students will develop skills in generating imagery through photographic and drawing processes and become proficient in digital image-making techniques using Photoshop and other Adobe suite software.

Students will select their own theme to guide individual design scenarios and briefs. Although print-based media is the most common area of study, illustration, animation and moving digital media are additional avenues for exploration linked to this course. A conceptual approach is encouraged to stimulate creative, 'out-of-the-box' ideas and experimental Design approaches. Students will also build upon the ideas of both traditional and contemporary designers in their own practise.

Teacher in charge - Mrs Liese Strong

Students in this course will be working towards

8 credits that are internally assessed and 12 credits that are externally assessed

Course endorsement is possible in L2 Design

This course leads to a university approved course

L2 PAINTING (L2APA) * λ

This course follows on from L1ART and leads to L3APA

This course builds on painting and multi-media skills and techniques that have been developed in Level 1 Art. At this level students select from a range of themes to guide their individual art-making. A conceptual approach is encouraged to stimulate creative, 'out-of-the-box' thematic ideas and experimental painting approaches. Students will also build upon the ideas of both traditional and contemporary artists in their own practise.

Teacher in charge - Mrs Liese Strong

Students in this course will be working towards

8 credits that are internally assessed and 12 credits that are externally assessed

Course endorsement is possible in L2 Painting

This course leads to a university approved course

L2 PHOTOGRAPHY (L2APH) * λ

This course follows on from L1ART and leads to L3APH

This course builds on the photography and conceptual skills developed in Level 1 Art. Students will develop technical skills on how to operate a digital SLR Camera, set-up for photoshoots, operate studio lighting, and refine imagery using post-production techniques in Adobe software. A conceptual approach is encouraged to stimulate creative, 'out-of-the-box' thematic ideas and experimental photography approaches. Students will also build upon the ideas of both traditional and contemporary artists in their own practise.

Teacher in charge - Mrs Liese Strong

Students in this course will be working towards

8 credits that are internally assessed and 12 credits that are externally assessed

Course endorsement is possible in L2 Photography

This course leads to a university approved course

L2 SCULPTURE (L2ASC) * λ

This course follows on from L1ART and leads to L3ASC

This course builds on the conceptual and sculptural skills developed in Level 1 Art. From a self-selected theme, students will create three-dimensional art works, installations and/or performances using a wide range of techniques and materials. The focus of this course is on creating three-dimensional forms; with moving image, light, sound, performance and time-based options also available for exploration. Students will also build upon the ideas of both traditional and contemporary artists in their own practise.

Teacher in charge - Mrs Liese Strong

Students in this course will be working towards

8 credits that are internally assessed and 12 credits that are externally assessed

Course endorsement is possible in L2 Sculpture

This course leads to a university approved course

L3 ART HISTORY (L3AHS)

This course follows on from L2AHS

Art History is a subject which allows you to understand the essence of society's ideas and priorities through unravelling how this is mirrored in the lives and artworks of artists.

The Topic of study is "Early Modernism" which takes place in the first half of the 20th Century, a period which covers both world wars and ground-breaking advances in science, technology and psychology. This was also a period of accelerated social, political, and philosophical change. Art movements from Cubism to Surrealism are studied to unravel artists' reinvention and interpretation of reality in this modern and uncertain age.

Study in Art History is complementary to other subjects such as History and Classics and does not need to be taken in conjunction with Practical Art. It is however a valuable subject for Visual Art students and is especially beneficial to those students interested in studying Art, Design or Architecture at a Tertiary level.

Students choosing this course must show an ability to respond to teacher led research and written tasks in the classroom and the ability to work independently. This course requires strong analytical and literacy skills.

Teacher in charge - Mrs Liese Strong

Students in this course will be working towards

12 credits that are internally assessed and 12 credits that are externally assessed

Course endorsement is possible in L3 Art History

This course is university approved

24 credits towards Level 1 Literacy

12R, 12B credits to UE literacy (R/W/B)

L3 DESIGN (L3ADS) * λ

This course follows on from L2ADS

This course builds on the technical and conceptual skills developed in Level 2 Design and will further student expertise in this field. At this level students will be expected to choose their own themes, and study the work of contemporary designers to generate their own unique body of work.

Experimental technical skills with digital media are fostered as students explore a wide range of thematic ideas. Although print-based media is the most common area of study, illustration, animation and moving digital media are additional avenues for exploration linked to this course. Divergent conceptual thinking is encouraged and an eye for detail and precision is essential for success. There is a large external assessment component to this course which will require students to submit three folio panels of original work or a moving image portfolio.

This is a valuable subject for those students interested in studying Art, Design or Architecture at a Tertiary level.

Teacher in charge - Mrs Liese Strong

Students in this course will be working towards

8 credits that are internally assessed and 14 credits that are externally assessed

Course endorsement is possible in L3 Design

This course is university approved

L3 PAINTING (L3APA) * λ

This course follows on from L2APA

This course builds on the technical and conceptual skills developed in Level 2 Painting and will further student expertise in this field. At this level students will be expected to choose their own themes and study the work of contemporary artists to generate their own individual programmes.

Experimental technical skills with wet and dry media are fostered as students explore a wide range of thematic ideas. Divergent conceptual thinking is encouraged and strong drawing skills are essential for success. There is a large external assessment component to this course which will require students to submit three folio panels of original work.

This is a valuable subject for those students interested in studying Art, Design or Architecture at a Tertiary level.

Teacher in charge - Mrs Liese Strong

Students in this course will be working towards

8 credits that are internally assessed and 14 credits that are externally assessed

Course endorsement is possible in L3 Painting

This course is university approved

L3 PHOTOGRAPHY (L3APH) * λ

This course follows on from L2APH

This course builds on the technical and conceptual skills developed in Level 2 Photography and is designed to further students' technical expertise in operating a digital SLR Camera. Students are also expected to create outstanding images using digital post production techniques and studio lighting at an industry standard.

Experimental and technical photographic skills are developed as students explore a wide range of thematic ideas. Divergent conceptual thinking is encouraged and is essential for success.

Students will also build upon the ideas of both traditional and contemporary artists in their own practise. There is a large external assessment component to this course which will require students to submit three folio panels of original work or a moving image portfolio.

This is a valuable subject for those students interested in studying Art, Design or Architecture at a Tertiary level.

Teacher in charge - Mrs Liese Strong

Students in this course will be working towards

12 credits that are internally assessed and 14 credits that are externally assessed

Course endorsement is possible in L3 Photography

This course is university approved

L3 SCULPTURE (L3ASC) * λ

This course follows on from L2ASC

This course builds on the conceptual and sculptural skills developed in Level 2 Sculpture. From a self-selected theme, students will create three-dimensional art works, installations and/or performances using a wide range of techniques and materials. The focus of this course is on creating three-dimensional forms, with moving image, light, sound, performance and time-based options also available for exploration. Students will also build upon the ideas of both traditional and contemporary artists in their own practise.

Experimental skills with sculptural materials are fostered as students explore a wide range of thematic ideas. There is a large external assessment component to this course which will require students to submit three folio panels of original work or a moving image portfolio.

This is a valuable subject for those students interested in studying Art, Design or Architecture at a Tertiary level.

Teacher in charge - Mrs Liese Strong

Students in this course will be working towards

8 credits that are internally assessed and 14 credits that are externally assessed

Course endorsement is possible in L3 Sculpture

This course is university approved

[END OF DOCUMENT – CLICK TO RETURN TO CONTENTS](#)