



# Curriculum Guide 2025



**LONG BAY COLLEGE**

*Care, create, excel*

## GENERAL INFORMATION

The information in this guide is designed to help you carefully choose your subjects for 2025. The courses you select are crucial for your future, so it is important that you think carefully about your course direction. The further you go in the senior school, the more difficult it becomes to change that direction. That is why the best advice is to keep as broad a range of subjects for as long as possible.

## CONTENTS

<b>GENERAL INFORMATION</b>	<b>2</b>
<b>SELECTING YOUR LEARNING PROGRAMME FOR 2025</b>	<b>3</b>
<b>PEOPLE TO SEE FOR SUBJECT ADVICE</b>	<b>3</b>
<b>NATIONAL CERTIFICATE OF EDUCATIONAL ACHIEVEMENT</b>	<b>3</b>
<b>UNIVERSITY ENTRANCE</b>	<b>5</b>
<b>CAREERS</b>	<b>7</b>
<b>GATEWAY</b>	<b>7</b>
<b>YEAR LEVEL PROGRAMMES IN 2025</b>	<b>7</b>
<b>SCHOLARSHIP</b>	<b>9</b>
<b>STUDENTS WITH ADDITIONAL LEARNING NEEDS</b>	<b>10</b>
<b>ENGLISH FOR ACADEMIC PURPOSES (EAP)</b>	<b>10</b>
<b>COURSE DESCRIPTIONS</b>	<b>11</b>
<b>COURSES AVAILABLE</b>	<b>12</b>
<b>COMMERCE</b>	<b>15</b>
<b>ENGLISH</b>	<b>19</b>
<b>EAP &amp; LANGUAGES</b>	<b>25</b>
<b>HEALTH &amp; PHYSICAL EDUCATION</b>	<b>31</b>
<b>MATHEMATICS</b>	<b>38</b>
<b>PERFORMING ARTS</b>	<b>43</b>
<b>SCIENCE</b>	<b>48</b>
<b>SOCIAL SCIENCES</b>	<b>54</b>
<b>TECHNOLOGY</b>	<b>64</b>
<b>VISUAL ARTS</b>	<b>74</b>
<b>END OF DOCUMENT – CLICK TO RETURN TO CONTENTS</b>	<b>79</b>

*Click on a title above to be taken to that section*

Version number	1.2
Last amended	1 July 2024

## SELECTING YOUR LEARNING PROGRAMME FOR 2025

There are recommended pathways, as prior experience of a subject is a strong indicator of future success. Note the progress of subjects from Year 11 through to Year 13 in the subject pathways. Some subjects are difficult to take up again if dropped early or may not go through to Year 13.

Students will be selecting their options for 2025 in Term 3 via the web portal. This will follow discussions with their Atawhai leader.

All students should consider the following for each course:

- ✓ Will I enjoy the course?
- ✓ Can I succeed at the subject?
- ✓ Where does it lead?

Senior students should also consider:

- ✓ What qualifications and future learning do my courses lead to
  - while at school?
  - once I've left?
- ✓ Does my learning programme help me meet the literacy and numeracy requirements
  - for NCEA?
  - for University Entrance?
- ✓ Do all my courses together give me enough credits or grades for the qualifications that I want?
- ✓ Do all my courses together make up a manageable workload for me?

## PEOPLE TO SEE FOR SUBJECT ADVICE

People you can see for advice about your course selection here at Long Bay College are your Atawhai leader, subject teachers and Deans.

Mrs Thomas ([KThomas@lbc.school.nz](mailto:KThomas@lbc.school.nz)), our Careers Counsellor, has information on a huge variety of careers and tertiary courses. She is available on 477 9009 ext 839 and is happy to talk with parents.

Students studying English for Academic Purposes (EAP) should also seek pathway advice from the Head of Faculty (EAP & Languages), Mrs Victoria Yun ([vyun@lbc.school.nz](mailto:vyun@lbc.school.nz)).

## NATIONAL CERTIFICATE OF EDUCATIONAL ACHIEVEMENT

New Zealand's qualification for school learners is the National Certificate of Educational Achievement – NCEA. NCEA is a qualification on New Zealand's National Qualifications Framework (NQF).

- NCEA is achievement based. Standards have been set in each area of learning. When students achieve these standards, they earn credits towards their NCEA qualification.
- The NQF contains assessment standards: Credits from all achievement standards and unit standards count towards NCEA.
- Achievement standards (AS) allow students to show the quality of their achievement in a standard – students can just achieve the standard, or achieve it with Merit or with Excellence.
- Unit standards (US), enable students to either achieve the standard by meeting the criteria or not achieve the standard. There are no merit or excellence grades.
- Some standards are assessed in school during the year (internally); other achievement standards are assessed externally, usually in end-of-year exams.
- All unit standards are internally assessed. (With the exception of the NCEA co-requisite).

---

## NCEA RESULTS

In January, the New Zealand Qualifications Authority (NZQA) issues students with a full profile of their achievement in each subject on their online platform. This interim results notice shows:

- The student's credits and grades for each standard.
- Endorsements (course or certificate level).
- NZQA will also provide each student with a record of achievement which summarises all standards, credits and qualifications gained to date.

NCEA candidates can access personal performance information themselves via <https://www.nzqa.govt.nz/login/> using their NZQA learner log in.

---

## HOW DO STUDENTS COMPLETE A QUALIFICATION?

**There are three NCEA qualifications. The requirements for each level are shown below:**

**Level 1** - For students in Year 11 from 2025, NCEA level 1 is a 60-credit qualification. The literacy and numeracy co-requisite related also needing to also be achieved. The co-requisite standards comprising 20 credits must be achieved for any level of NCEA to be awarded but that do not count toward the 60-credit total for NCEA level 1.

**Level 2** - 80 credits, with at least 60 credits from Level 2 or above (including 10 literacy and 10 numeracy credits from Level 1).\*

**Level 3** - 80 credits, with at least 60 credits from Level 3 or above (including 10 literacy and 10 numeracy credits from Level 1).\*

*Once the 10 literacy and 10 numeracy credit requirement has been completed it will count towards subsequent levels.\*\**

*\* NCEA changes to Level 2 and Level 3 will be rolled out in 2027 and 2028. There are no changes to NCEA level 2 or 3 in 2025.*

*\*\*For students new to NCEA, including our Year 11 students, from 2025, numeracy and literacy achievement will be determined from achievement of 20 credits relating to reading, writing and numeracy. These standards comprise the NCEA literacy and numeracy co-requisite assessment and needing to be achieved for any NCEA level to be awarded. Students who have not yet achieved the co-requisite assessment in Year 10 in 2024, will be supported by their Level 1 NCEA English and Maths courses in Year 11 in 2025. This support including specific NCEA Level 1 standards tagged for literacy and numeracy. Students who do not achieve the co-requisite in 2024 will also have the opportunity to sit the co-requisite assessments in 2025. These changes do not affect any student who achieved literacy and numeracy in 2023 in the previous version of NCEA.*

---

## NCEA LEVEL 1-3 CERTIFICATE ENDORSEMENTS

Students can achieve their certificate with Merit or Excellence endorsement. The requirements for the qualification must also be met.

**Endorsement with Merit:** 50 credits at Merit or Excellence at the same level or higher.

**Endorsement with Excellence:** 50 credits at Excellence at the same level or higher.

Credits counting towards endorsement may be gained over more than one year and more than one level, but must be gained at the level of the certificate or above. For example, Level 2 credits will count towards endorsement of a Level 1 NCEA, but Level 1 credits will not count towards endorsement of a Level 2 NCEA.

---

## NCEA LEVEL 1-3 COURSE ENDORSEMENT

To attain a course endorsement a student will need to achieve 14 or more credits at Merit and Excellence level with at least 3 credits from externally assessed standards and 3 credits from internally assessed standards in a single course in a single year. This endorsement will be recorded on the students result notice.



## UNIVERSITY ENTRANCE

Students who want to study at university must ensure that the courses they select at school allow them to qualify for university entry. You will be qualified for entrance to a university in New Zealand in 2025 if you have obtained all of the following:

- NCEA Level 3 – 60 credits Level 3 or above (including 10 literacy and 10 numeracy credits from Level 1).
- Level 3 approved subjects – At least 14 credits in each of three Level 3 university approved subjects.
- Literacy – At least 10 credits at Level 2 or higher in English or Te Reo Māori or Level 4 English for Academic Purposes (EAP) or from other approved standards; 5 credits must be in reading and 5 credits must be in writing. Course descriptions use R for reading, W for writing, B for credits that can count as either reading or writing.
- Numeracy – At least 10 credits at Level 1 or higher from relevant standards. (This applies to students who achieved numeracy in 2023).
- Students new to NCEA in 2025 will need to pass the new NCEA co-requisite to secure any achievement of an NCEA level. Co-requisite assessments are planned to take place multiple times in a year, each part of the co-requisite (reading, writing and numeracy) needing to be passed only once. In 2025 the co-requisite will be sat by students in Year 10 and students in the years above who have not yet achieved the literacy or numeracy requirements. Tagged NCEA level 1 standards that count toward literacy and numeracy as part of Level 1 courses in 2025 will also count towards a student's achievement of the co-requisite).

### ENTRY REQUIREMENTS FOR UNIVERSITY COURSES

The entry criteria for any tertiary course should be checked with the university – the same course at different universities can have different entry criteria.

University Entrance will NOT give you entrance into all universities and/or all courses (UE is necessary but many courses and/or universities require more). Therefore, students should be gaining 80 Level 3 credits from university approved subjects.

Students intending to apply for:

- University of Auckland should have FIVE university approved subjects.
- Students may need to do a compulsory Academic English paper at university as part of their first 12 months of study.
- Students studying English for Academic Purposes (EAP) should also seek advice from their EAP teachers on how they can meet requirements for University of Auckland.
- All other universities should have a minimum of FOUR university approved subjects in their programme, however, five is preferable.

Some courses require a specific Rank Score. This is calculated as follows:

- Take your top 80 Level 3 credits.
- For each Excellence apply 4 points.
- each Merit apply 3 points.
- each Achieved apply 2 points.
- Use credits from 5 or fewer university approved subjects only.
- Use a maximum of 24 credits per subject.

This example has a rank score of 210 points  
(48 + 78 + 84)

The University of Auckland has a rank score calculator  
- <https://www.rankscorecalculator.auckland.ac.nz/>

Subject	Excellence credits	Merit credits	Achieved credits
English	8	6	10
History	-	6	16
Statistics	4	4	16
Geography	-	10	7
French	-	-	24
Subtotals	12	26	73
Best 80 credits	12	26	42
(only up to 80 credits in total)			
Calculate points	48 points (12x4)	78 points (26x3)	84 points (42x2)

The following are examples of the current requirements for NZ universities. These are subject to change and students should check the relevant university website for up-to-date information. Please be aware that this can change at any time.

University	Requirement/recommendation		Website
<b>The University of Auckland</b>	Arts	150 points	<a href="https://www.auckland.ac.nz/">https://www.auckland.ac.nz/</a>  Please see <a href="#">here</a> for details of Academic English support for students in their first year of study at the University of Auckland
	Science	165 points	
	Commerce	180 points	
	Bio-medical Science	280 points	
	Engineering	260 points (Physics/Calculus externals)	
<b>AUT</b>	UE, but check specific requirements for each course - AUT has higher guaranteed scores.		<a href="https://www.aut.ac.nz/">https://www.aut.ac.nz/</a>
<b>University of Canterbury</b>	UE (but check special degree requirements)		<a href="https://www.canterbury.ac.nz/">https://www.canterbury.ac.nz/</a>
<b>Massey University</b>	140 points (preferred)		<a href="http://www.massey.ac.nz/">http://www.massey.ac.nz/</a>
<b>University of Otago</b>	140 points (preferred)		<a href="https://www.otago.ac.nz/">https://www.otago.ac.nz/</a>
<b>The University of Waikato</b>	UE but look for extra criteria		<a href="https://www.waikato.ac.nz/">https://www.waikato.ac.nz/</a>
<b>Victoria University of Wellington</b>	150 points Architecture and Building Science (180 points)		<a href="https://www.victoria.ac.nz/">https://www.victoria.ac.nz/</a>
<b>UNITEC</b>	UE for some courses; check each course for subject requirements		<a href="https://www.unitec.ac.nz/">https://www.unitec.ac.nz/</a>

## CAREERS

Careers Guidance and Counselling is available to students, who can make appointments to see the Careers Advisor. Our Careers Room has a wide range of information available. During the year, students can attend university liaison visits, trade ITO visits, lunchtime presentations, the Careers Expo, and STAR and Gateway courses as well as participating in a number of out-of-school trips and attending a wide variety of open days and information sessions. Students at risk of leaving school unprepared for the workplace or future education/training will be identified by teachers, Deans and the Guidance Counsellors and referred to the Careers Advisor. Students leaving school have their career plans checked by the Careers Advisor before a Leavers Form is issued.

## GATEWAY

The Gateway programme assists students to transition from school into work or a tertiary course. Students are given the opportunity to work in a structured workplace environment 1 day per week for 5-10 weeks in an industry of their choice. The programme allows students to explore the practical aspects of specific career options and gives them the opportunity to gain new skills and knowledge. As part of the course, students will complete First Aid, OSH and Interview Skills courses which will give them 20 Level 2 and Level 3 credits.

## YEAR LEVEL PROGRAMMES IN 2025

---

### ASPIRING SCHOLARS

A programme supportive of academically excellent students and their engagement with our Junior Curriculum. It is not a “gifted” programme but one with academic extension and enrichment that will be of benefit to gifted students as well. It is a programme that covers five junior curriculum classes within the same class grouping and is supportive of students in working toward NZQA Scholarship as they work through Years 9 to 13.

Being selected for the Aspiring Scholars programme is not seen as a reward but as a response to an educational need. Students selected have the right to choose not to enter the programme, without repercussions. Students not initially selected, who indicate through high performance the ability required, will be offered the opportunity to move into the programme in Year 10. Where appropriate the programme provides curriculum enrichment and encourages differentiated tasks.

Entry to our Aspiring Scholars Programme in Year 9 is determined by identification in the enrolment process, feedback from prior school, educational psychologist report (if evident), performance in entrance testing and prior scholastic performance.

---

### ACCELERATION COURSES

Junior students identified as likely to benefit from acceleration in English and Maths are targeted for additional timetabled support for a semester.

This acceleration occurs through targeted classes running in parallel to their timetabled English or Maths class. Entrance to the class determined in Semester 1 in Year 9 by identification in the enrolment process, feedback from prior school, educational psychologist report (if evident), performance in entrance testing and prior scholastic performance. Subsequent entry is based on the feedback of classroom teachers, a student's progress to date and in discussion with the Heads of Maths and English. If a student's family are interested in being considered for Junior Acceleration Courses, they should identify this in the enrolment process.

\*Please note that all new entrant student testing data is reviewed and where the College perceives a student would benefit from engaging with Junior Acceleration Courses further discussion with parents will occur ahead of a potential placing in our course.

---

## TE MĀTAURANGA MĀORI

During enrolment in 2024 students will have the opportunity to identify if they would like to participate in this programme of study. Mātauranga Māori focuses on developing student understanding of Māori knowledge. This course is a one period a week, timetabled class and focuses on foundational Māori values such as tangata whenuatanga (affirming Māori world view), manaakitanga (care and respect for each other), and kaitiakitanga (sustainability and guardianship of our environment). Students will learn about pūrākau / oral histories and visit our local tohu whenua / landmarks to understand who was here before us and how they interacted with this land. Students will learn skills and knowledge of Māori technology past, and how it is relevant and valuable in the present and into the future. Learning will be both inside and outside the classroom, including visits to a Marae and Long Bay Park.

---

## YEAR 9

All Year 9 students study core subjects English, Mathematics, Science, Social Science and Health & Physical Education.

In addition, students will choose four modules. One module must come from each table.

Modules run for ONE semester. There are two semesters in each academic year.

Table A	Table B	Table C
<ul style="list-style-type: none"><li>• Art</li><li>• Dance</li><li>• Digital Art</li><li>• Drama</li><li>• Music Rock/Pop</li><li>• Performance Music</li></ul>	<ul style="list-style-type: none"><li>• Design &amp; Technology</li><li>• Design &amp; Visual Communication</li><li>• Digital Technology Studies</li><li>• Food Technology</li></ul>	<ul style="list-style-type: none"><li>• Commerce</li><li>• Te reo Māori</li><li>• Sports Science &amp; Athletic Development</li></ul>

---

## YEAR 10

All Year 10 students study core subjects English, Mathematics, Science, Social Science and Health & Physical Education

In addition, students will choose four modules. One module must come from each table.

Te reo Māori runs for TWO semesters, all other modules run for ONE semester. There are two semesters in each academic year.

Students will choose **either**

Table A	Table B	Table C
<ul style="list-style-type: none"><li>• Art</li><li>• Dance</li><li>• Digital Art</li><li>• Drama</li><li>• Music Rock/Pop</li><li>• Performance Music</li></ul>	<ul style="list-style-type: none"><li>• Design &amp; Visual Communication</li><li>• Design &amp; Technology</li><li>• Digital Technology Studies</li><li>• Food Technology</li></ul>	<ul style="list-style-type: none"><li>• Commerce</li><li>• Te reo Māori</li><li>• Sports Science &amp; Athletic Development</li></ul>

- Te reo Māori plus TWO other modules (one module from Table A and one from Table B)
- **OR** FOUR modules from the list above. At least one module must come from each table



---

## YEAR 11

Students study six Level 1 subjects including English and Mathematics.

Studying a Science subject is highly recommended. Students should aim for a broad range of subjects and avoid taking more than two from one faculty.

From 2025, all Level 1 NCEA achievement standard based courses are limited to 15 credits.

A maximum of two portfolio subjects is strongly recommended. Portfolio subjects are indicated with an **λ** in the subject title.

---

## YEAR 12

Students study six subjects.

Students needing to achieve 10 University Entrance (UE) literacy credits. 5 tagged as reading (R), 5 tagged as writing (W) or both (B) credits to support University Entrance. Please note these credits are in addition to the student needing to have achieved the NCEA Literacy and Numeracy co-requisite.

There are situations where students may be studying at more than one level.

If choosing portfolio subjects, students are recommended to choose a maximum of two. Portfolio subjects are indicated with an **λ** in the subject title.

---

## YEAR 13

Students study six subjects. Students may be granted an independent learning period in place of one subject to support a University Entrance pathway.

Students intending to study at university should read the [UNIVERSITY ENTRANCE](#) section of this guide and check that their chosen subjects will enable them to meet the recommended entry requirements.

Students studying a mix of Level 1, 2, and 3 subjects are working towards the NCEA qualification at the appropriate level for them. If choosing portfolio subjects, students are recommended to choose a maximum of two (Portfolio subjects are indicated with an **λ** in the subject title).

---

## EXCLUSIONS BETWEEN SUBJECTS

An NCEA standard is only counted once towards a students total number of credits for a particular NCEA level, with only the highest grade counting. This has resulted in some exclusions between subjects, where a student will only be able to study one of the subjects. These exclusions are stated in the curriculum guide.

## SCHOLARSHIP

NZQA Scholarship is the premier academic award a secondary school student in New Zealand can achieve. It is separate to NCEA Levels 1, 2 or 3. Programmes and tutorials outside of class support students working towards NZQA Scholarship exams.

## STUDENTS WITH ADDITIONAL LEARNING NEEDS

### NEW ZEALAND CERTIFICATE IN SKILLS FOR LIVING FOR SUPPORTED LEARNERS

This is a NZQA approved programme for students working at the beginning of the NZ Curriculum and who are unable to access and experience success in the NCEA system. These students are part of our ALP (Adapted Learning Programme) and are based at Learning Support for assisted Numeracy, Literacy and Social Skills classes. The programme provides real opportunities for inclusion and personalized learning based on a student's strengths and interests and planned around a student's IEP (individual education plan) which is strengths-based and co-created with whānau. There is a focus on developing confidence, personal growth, self-esteem and independence.

Students (Years 9 to 13) will work for two to four years on this programme, depending on their learning needs and will work towards achieving credits in both Literacy and Numeracy. From there we can help create a transition pathway for students as they plan for life beyond school.

### LIFE SKILLS PROGRAMME

This invite-only programme is for Year 11 and 12 students who may be struggling with a full NCEA programme. It offers a flexible framework that gives students the opportunity to achieve Communication Skills, Self-Management and Core Generic unit standards within a smaller and more scaffolded learning environment. Within the programme there are opportunities to use literacy and numeracy skills to organise, interpret and communicate information in a way which relates to and can be applied to real-life scenarios.

### SPECIAL ASSESSMENT CONDITIONS

Learning Support also supports students with Special Assessment Conditions (SAC), through making Special Assessment Condition applications to NZQA, providing advice to teachers and students, and providing SAC for some assessments.

Please contact Krick (Kristen) Evans, Head of Learning Support Faculty and SENCo: [KEvans@lbc.school.nz](mailto:KEvans@lbc.school.nz) for further information.

## ENGLISH FOR ACADEMIC PURPOSES (EAP)

Long Bay College provides modern and relevant courses for students studying English as an additional language, based on individual needs and chosen pathways. This pathway is available to all students, both domestic and international, where English is their second language.

Effective and relevant programmes help students to become confident and proficient in English. By studying at Long Bay College, students are not only supported in everyday life in New Zealand, but are also able to access the entire curriculum at the school and be successful in their academic studies.

EAP courses have been carefully designed to provide the framework for language learning, as well as the skills required to achieve at NCEA. All levels of English are catered for, from Beginners to Advanced. Many courses are also NCEA accredited and provide a pathway to University Entrance literacy.

All students will be assessed for English levels on arrival. Progress will then be carefully monitored, and the EAP teachers, along with the Head of EAP, will regularly review language levels.

All EAP classes are taught in a positive, inclusive learning environment.

The English for Academic Purposes curriculum is designed to assist students in acquiring the language skills they need to function effectively in a highly literate, often multi-lingual society.

Please see the [EAP & Languages](#) section of this guide. This is the most relevant and effective pathway for English language learners.

## COURSE DESCRIPTIONS

The courses are grouped in learning areas. For each course, you need to check:

- The course which it follows on from.
- Where the subject leads to.
- The number and type of credits offered.

Each learning area will include a pathway chart and descriptions of the courses. The descriptions include:

- An outline of the course.
- The number of credits available and whether they are internally or externally assessed.
- The contribution to Level 1 Literacy, Numeracy or University Entrance literacy (R = reading, W = writing, B = can count as either reading or writing).
- Whether an endorsement is possible for the course.
- The staff member in charge of the course.

Please note that:

- Prior experience and success in a subject are strong predictors of future success.
- If a student is likely to study a subject in later levels early specialisation is recommended.

## COURSES AVAILABLE

Some subjects stop at Level 1, some at Level 2 and some lead into two or three other subjects. Compulsory courses are in **BOLD**. Courses in CAPITALS are full year, **others** are one semester. Senior courses are black and are university approved courses unless they are UNDERLINED. Courses with \* have limited places and entry. Entrance to these courses is determined by invitation from the Faculty based on students' academic performance.

	Year 9	Year 10	Year 11	Year 12	Year 13
Commerce	Commerce	Commerce	COMMERCE	ACCOUNTING BUSINESS STUDIES ECONOMICS	ACCOUNTING BUSINESS STUDIES ECONOMICS
English	ENGLISH  Targeted Literacy*	ENGLISH  Targeted Literacy*	ENGLISH EXTENSION*  or ENGLISH ENRICHMENT  or ENGLISH FOR LITERACY	ENGLISH EXTENSION*  or ENGLISH ENRICHMENT  or <u>ENGLISH FOR VOCATIONS</u>  MEDIA STUDIES	ENGLISH EXTENSION*  or ENGLISH ENRICHMENT  or <u>ENGLISH FOR VOCATIONS</u>  MEDIA STUDIES
EAP & Languages	ENGLISH FOR ACADEMIC PURPOSES (EAP) (English language learners)	ENGLISH FOR ACADEMIC PURPOSES (EAP) (English language learners)	<u>LEVEL 1 ENGLISH FOR ACADEMIC PURPOSES (EAP)</u> (English language learners)  <u>LEVEL 2 ENGLISH FOR ACADEMIC PURPOSES (EAP)</u> (English language learners)  <u>LEVEL 3 ENGLISH FOR ACADEMIC PURPOSES (EAP)</u> (English language learners)  LEVEL 3 ENGLISH FOR ACADEMIC PURPOSES EXTENSION (EAE) (English language learners foundation studies)  <u>ENGLISH FOR ACADEMIC FOUNDATION (EAL)</u> (English language learners foundation studies)  <u>IELTS PREPARATION COURSE</u>		
	ENGLISH FOR ACADEMIC PURPOSES TRANSITION (English language learners)				
			CHINESE FOR NATIVE SPEAKERS	CHINESE FOR NATIVE SPEAKERS  LANGUAGES FOR NATIVE SPEAKERS	CHINESE FOR NATIVE SPEAKERS  LANGUAGES FOR NATIVE SPEAKERS

Health and Physical Education	<b>HEALTH AND PHYSICAL EDUCATION</b>  Sports Science and Athletic Development	<b>HEALTH AND PHYSICAL EDUCATION</b>  Sports Science and Athletic Development	HEALTH  PHYSICAL EDUCATION  HEALTH AND PHYSICAL EDUCATION	HEALTH  PHYSICAL EDUCATION  <a href="#">EARLY CHILDHOOD EDUCATION</a>  <a href="#">PRACTICAL PHYSICAL EDUCATION AND SPORTS LEADERSHIP</a>	HEALTH  PHYSICAL EDUCATION  <a href="#">EARLY CHILDHOOD EDUCATION</a>  <a href="#">PRACTICAL PHYSICAL EDUCATION AND SPORTS LEADERSHIP</a>  <a href="#">FITNESS STUDIES</a>
			LIFE SKILLS*	LIFE SKILLS*	
Learning support	ADAPTED LEARNING PROGRAMME*				
Mathematics	<b>MATHEMATICS</b>  Targeted Numeracy*	<b>MATHEMATICS or MATHEMATICS ENRICHMENT*</b>  Targeted Numeracy*	<b>MATHEMATICS or MATHEMATICS ENRICHMENT*</b>  <b>MATHEMATICS FOR NUMERACY</b>  MATHEMATICS TRANSITION (English language learners)	MATHEMATICS AND STATISTICS  CALCULUS	MATHEMATICS  STATISTICS  CALCULUS  CALCULUS ENRICHMENT*
Performing Arts	Dance  Drama  Performance Music  Music Rock/Pop	Dance  Drama  Performance Music  Music Rock/Pop	DANCE  DRAMA  MUSIC	DANCE  DRAMA  MUSIC	DANCE  DRAMA  MUSIC



Science	<b>SCIENCE</b>	<b>SCIENCE</b>	BIOLOGY CHEMISTRY EARTH AND SPACE SCIENCE PHYSICS <a href="#">GENERAL SCIENCE*</a> SCIENCE TRANSITION (English language learners)	BIOLOGY CHEMISTRY EARTH AND SPACE SCIENCE PHYSICS	BIOLOGY CHEMISTRY EARTH AND SPACE SCIENCE PHYSICS
	<b>SOCIAL SCIENCE</b> Te Reo Māori	<b>SOCIAL SCIENCE</b> Te Reo Māori	GEOGRAPHY HISTORY TE REO MĀORI	ART HISTORY CLASSICS GEOGRAPHY HISTORY PSYCHOLOGY SOCIOLOGY TE REO MĀORI <a href="#">TOURISM</a>	ART HISTORY CLASSICS GEOGRAPHY HISTORY PSYCHOLOGY SOCIOLOGY TE REO MĀORI <a href="#">TOURISM</a>
	Design and Visual Communication Digital Technology Studies Food Technology Design and Technology	Design and Visual Communication Digital Technology Studies Food Technology Design and Technology	DESIGN AND VISUAL COMMUNICATION <sup>λ</sup> DIGITAL TECHNOLOGY STUDIES DESIGN AND TECHNOLOGY <sup>λ</sup> <a href="#">ENGINEERING</a> FOOD TECHNOLOGY <sup>λ</sup> <a href="#">WOOD TECHNOLOGY</a>	DESIGN AND VISUAL COMMUNICATION <sup>λ</sup> DIGITAL TECHNOLOGY STUDIES DESIGN AND TECHNOLOGY <sup>λ</sup> <a href="#">ENGINEERING</a> FOOD TECHNOLOGY <sup>λ</sup> <a href="#">WOOD TECHNOLOGY</a>	DESIGN AND VISUAL COMMUNICATION <sup>λ</sup> DIGITAL TECHNOLOGY STUDIES DESIGN AND TECHNOLOGY <sup>λ</sup> <a href="#">ENGINEERING</a> <a href="#">CUISINE AND HOSPITALITY STUDIES</a> <a href="#">WOOD TECHNOLOGY</a>
	Art Digital Art	Art Digital Art	ART <sup>λ</sup> DIGITAL ART <sup>λ</sup> <small>Please note, students can only study either NCEA Level 1 Art or NCEA Level 1 Digital Art</small>	ART HISTORY DESIGN <sup>λ</sup> PAINTING <sup>λ</sup> PHOTOGRAPHY <sup>λ</sup>	ART HISTORY DESIGN <sup>λ</sup> PAINTING <sup>λ</sup> PHOTOGRAPHY <sup>λ</sup>

<sup>λ</sup> Portfolio subjects are indicated with this symbol <sup>λ</sup>. If choosing portfolio subjects, students are recommended to choose a maximum of two.  
**All courses offered will be run subject to student numbers and staffing availability at the Principal's discretion.**

## COMMERCE

Head of Faculty – Ms Linda Everett

Ext 862

[leverett@lbc.school.nz](mailto:leverett@lbc.school.nz)



### Y9 COMMERCE (9COM)

*This course leads to 10COM*

This course is mainly focused on developing a student's personal financial literacy. It is delivered in a fun, interactive and exciting way using an online program. Students will also learn about other business functions such as marketing and branding. This course will be varied, providing a mixture of theory and experiential learning. Problem solving and decision-making skills will be developed.

Teachers in charge – Mrs Christina Ganivatu, Mr Kyle Naidoo

### Y10 COMMERCE (10COM)

*This course leads to L1COM*

This course focuses on learning the basic skills and foundational knowledge of Accounting, Business and Economics in a fun and interesting way. Students will learn about business from unique New Zealand and Māori perspectives, and their relation to business. There may also be an opportunity for students to participate in a cross-curricular challenge involving the local community. If this challenge is offered in 2025, the expectation will be that all 10COM students will participate.

Teachers in charge – Mrs Barbara Etzinger, Mrs Christina Ganivatu

### L1 COMMERCE (L1COM)

*This course leads to L2ACC, L2BST and L2ECO*

L1 Commerce will explore financial, economic, and business concepts and models to make sense of society and solve problems. Studying these concepts will build the knowledge, skills, and values students need to navigate, and participate in, the economic world. Students will learn how participants in the economic world make decisions, and they will analyse how these decisions impact on sustainability. Learning and assessment in this course will examine different approaches to commerce, including Māori and Pasifika approaches, and how these business models work within different organisation contexts. Students will plan and produce a product to take to the market, most likely a school Market Day.

Teacher in charge - Ms Linda Everett

**Students in this course will be working towards**

5 credits that are internally assessed and 10 credits that are externally assessed

Course endorsement is possible in L1COM

This course leads to a university approved course

## **L2 ACCOUNTING (L2ACC)**

*This course follows on from L1COM and leads to L3ACC.*

The aim of this course is to introduce students to manual and computer methods of recording accounting data and to provide them with a clear basic understanding of financial reports and their components. The course will assist students to understand the accounting principles and processes involved in designing an accounting sub-system, accounting for cash, accounts receivable, accounts payable, inventory and property, plant, and equipment. Students will prepare and analyse financial statements for decision making. This course will benefit students in any career they choose.

Teacher in charge – Mr Kyle Naidoo

**Students in this course will be working towards**

7 credits that are internally assessed and 9 credits that are externally assessed.

Course endorsement is possible in L2ACC.

0 Credits towards UE literacy (R/W/B)

This course leads to a university approved course.

## **L2 BUSINESS STUDIES (L2BST)**

*This course follows on from L1COM and leads to L3BST.*

This course provides students with the opportunity to learn and apply useful business skills such as planning, problem solving and decision making. For a large part of the year students will, in groups, plan and run a business that specifically focuses on the well-being of their community. In the latter part of the year, students will study various business concepts. This will require students investigating issues within a business and the impacts that occur due to these issues. Students will develop solutions for these issues and offer recommendations based on these solutions.

Teacher in charge – Ms Linda Everett

**Students in this course will be working towards**

15 credits that are internally assessed and 8 credits that are externally assessed.

Course endorsement is possible in L2BST.

0 Credits towards UE literacy (R/W/B)

This course leads to a university approved course.

## L2 ECONOMICS (L2ECO)

*This course follows on from L1COM and leads to L3ECO.*

Economics provides excellent insight into the real world. The course covers macroeconomics which plays a key role in all aspects of life and especially the politics part of the aggregate Aotearoa economy. Economics students will be well equipped with analytical and problem-solving skills, numerical and computer skills, as well as the ability to work well either alone or within a team. All these skills are transferable allowing students to branch into anything from stock investment, money exchange, business start-ups, to becoming a wise voter in the coming general election.

Teacher in charge - Mrs Barbara Etzinger

### **Students in this course will be working towards**

8 credits that are internally assessed and 8 credits that are externally assessed.

Course endorsement is possible in L2ECO.

8R credits to UE literacy (R/W/B)

This course leads to a university approved course.

## L3 ACCOUNTING (L3ACC)

*This course follows on from L2ACC*

The aim of the course is to provide a foundation for the study of Accounting at University and other tertiary institutions. The course covers accounting for Partnerships, Companies and Manufacturing organisations. Students will develop their understanding of the conceptual basis of accounting, process transactions, prepare financial statements and explain information for management decision making. This course will benefit students in any career they choose.

Teacher in charge – Mr Kyle Naidoo

### **Students in this course will be working towards**

17 credits that are internally assessed and 4 credits that are externally assessed

Course endorsement is possible in L3ACC

5B credits to UE literacy (R/W/B)

This course leads to a university approved course.

### L3 BUSINESS STUDIES (L3BST)

*This course follows on from L2BST.*

In this course students will review the global business environment and explore how New Zealand based businesses compete on the world stage. Students, in groups, will undertake a complex business activity, planning, producing, and taking a product to market as part of the Young Enterprise Program. The course consists of a mixture of theory and experiential learning and assessment. Students will hone their business skills and further develop their interpersonal skills. They will be able to solve problems and make strategic business decisions.

Teachers in charge – Mrs Barbara Etzinger, Mrs Christina Ganivatu

#### **Students in this course will be working towards**

15 credits that are internally assessed and 4 credits that are externally assessed.

Course endorsement is possible in L3BST.

6R, 4B credits to UE literacy (R/W/B)

This course leads to a university approved course.

### L3 ECONOMICS (L3ECO)

*This course follows on from L2ECO.*

Economics is the perfect combination of numbers and words, problems, essays, calculations, and interpretations. It is both an art and a science subject. Students will have the opportunity to learn and build microeconomic models which give insights into the real world, and then to critique these models based on their assumptions. There is rarely a right answer in Economics, but any argument put forward must be backed up by quantitative evidence. Students will ultimately enjoy Economics because it allows them to employ and develop analytical and evaluative skills.

Teacher in charge - Mrs Barbara Etzinger

#### **Students in this course will be working towards**

10 credits that are internally assessed and 10 credits that are externally assessed.

Course endorsement is possible in L3ECO.

10R, 10B credits to UE literacy (R/W/B)

This course leads to a university approved course.



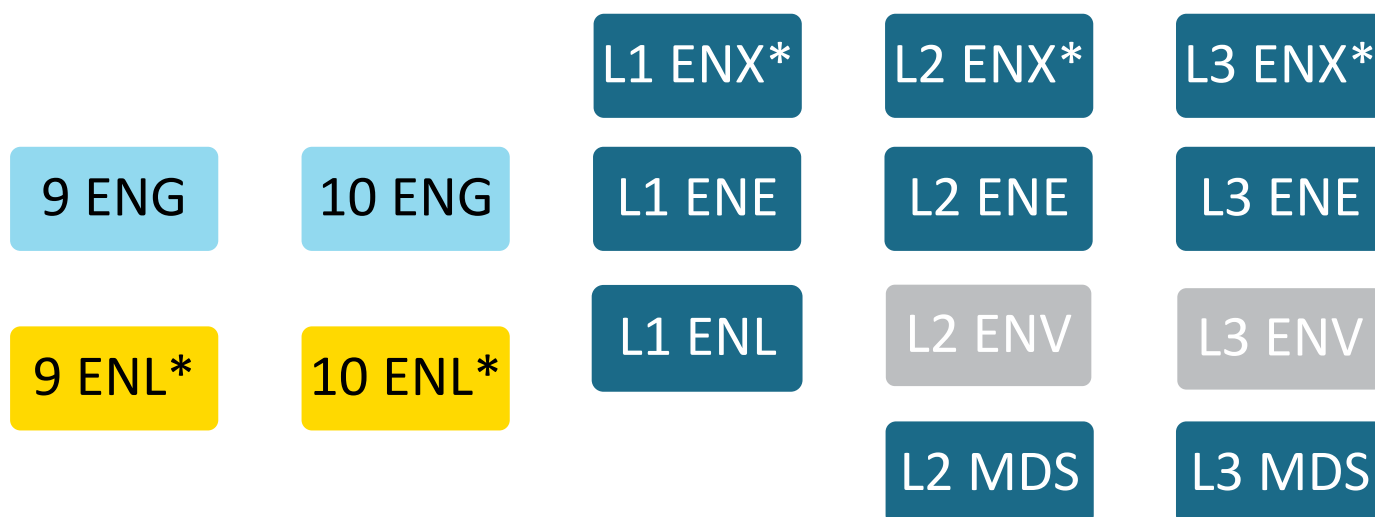
## ENGLISH

Acting Head of Faculty - Mrs Keli Sheblom Ext 867

ksheblom@lbc.school.nz

The relevant and effective pathway for English language learners is English for Academic Purposes (EAP)

Please see the course descriptions in the [EAP and Languages](#) section of this guide.



### Y9 ENGLISH (9ENG)

*This course leads to 10ENG*

Students will gain a deeper understanding of the English language by having a variety of opportunities for language to be used. There are two broad language streams: creating meaning and making meaning. The course itself will consist of comprehending a variety of texts, responding to texts, writing creatively and formally, presenting orally, using research skills and reading widely and independently. Grammar and spelling are emphasised.

Teacher in charge - Ms Maria Hughes

### Y9 ENGLISH TARGETED (9ENL\*)

This course is in response to students' needs and teacher recommendations. This course offers additional literacy support, over the course of one semester, to students who are struggling to achieve in mainstream classes.

Teacher in charge – Mrs Keli Sheblom

### Y10 ENGLISH (10ENG)

*This course follows on from 9ENG. This course leads to L1ENX/L1ENE/L1ENL*

Students will gain a deeper understanding of the English language by having a variety of opportunities for language to be used. There are two broad language streams: creating meaning and making meaning. The course itself will consist of exploring a variety of texts, writing creatively and formally, presenting orally, using research skills, and reading widely and independently. There is a focus on developing the skills needed for a high level of reading and writing competency. Specific language features and vocabulary are emphasised.

Teacher in charge - Ms Maria Hughes

## Y10 ENGLISH TARGETED (10ENL\*)

This course is in response to students' needs and teacher recommendations. This course offers additional literacy support, over the course of one semester, to students who are struggling to achieve in mainstream classes. The course is supportive of achievement of the NCEA co-requisite.

Teacher in charge – Mrs Keli Sheblom

## L1 ENGLISH (L1ENE)

*This course follows on from 10ENG and leads to L2ENX/L2ENE/L2ENV*

This course challenges students to develop their ability to use language skilfully and to interpret it effectively while exploring a range of modern and classic literature. Students will develop their ability to write confidently in a variety of styles and for different audiences. This course will also support student achievement in the NCEA Literacy Co-Requisite as required.

Teacher in charge – Mrs Keli Sheblom

### **Students in this course will be working towards**

15 credits towards Level 1 Literacy (\*subject to NCEA change package developments)

10 credits that are internally assessed and 5 credits that are externally assessed.

Course endorsement is possible in L1ENE.

This course leads to a university approved course.

## L1 ENGLISH EXTENSION (L1ENX\*)

*This course follows on from 10ENG/10ENX and leads to L2ENE/L2ENX*

This course is aimed at our highest achieving English scholars who have shown a strong aptitude and passion for the subject. Literary theory, an introduction to literary movements, and a wide range of classic and modern literature will be studied. The course will focus on extending reading, writing, and critical thinking skills. Students will develop an understanding of the English Scholarship exam. This is an invite only course.

Teacher in charge – Ms Maria Hughes

### **Students in this course will be working towards**

15 credits towards Level 1 Literacy (\*subject to NCEA change package developments)

10 credits that are internally assessed and 5 credits that are externally assessed.

Course endorsement is possible in L1ENX.

This course leads to a university approved course.

## L1 ENGLISH FOR LITERACY (L1ENL)

*This course follows on from 10ENG and leads to L2ENE/L2ENV*

This course supports students to develop their ability to use and interpret language, while exploring a range of literature. Students will develop their ability to write confidently in a variety of styles and for different audiences. This course will also support student achievement in the NCEA Literacy Co-Requisite as required. their NCEA Level 1 Literacy requirements.

Teacher in charge – Mrs Keli Sheblom

### **Students in this course will be working towards**

15 credits towards Level 1 Literacy (\*Subject to NCEA Co-Requisite requirements and Ministry change package updates)

5 credits that are internally assessed and 10 credits that are externally assessed.

Course endorsement is possible in L1ENL

This course can lead to a university approved course.

## L2 ENGLISH (L2ENE)

*This course follows on from L1ENX/L1ENE/L1ENL and leads to L3ENX/L3ENE/L3ENV*

This course will consist of a combination of internal and external standards. Students will be challenged to read a range of texts, both written and visual, and to develop their skills in writing for different purposes. Presentation skills will be developed. A wide range of classic and modern literature will be studied. The course will provide the opportunity to gain UE Literacy.

Teacher in charge – Mrs Keli Sheblom

### **Students in this course will be working towards**

13 credits that are internally assessed and 8 credits that are externally assessed

4R, 10W, 4B credits to UE literacy (R/W/B)

Course endorsement is possible in L2ENE

This course leads to a university approved course.

## L2 ENGLISH EXTENSION (L2ENX\*)

*This course follows on from L1ENE/L1ENX and leads to L3ENE/L3ENX*

This course is aimed at our highest achieving English scholars who have shown a strong aptitude and passion for the subject. A focus on literary movements and theory is central to the course. A wide range of classic and modern literature is studied. Students will be challenged to extend their reading, writing, and critical thinking skills. Close analysis skills of literary texts are emphasised in preparation for the English Scholarship exam. This is an invite only course.

Teacher in charge - Ms Maria Hughes

### **Students in this course will be working towards**

13 credits that are internally assessed and 8 credits that are externally assessed

Course endorsement is possible in L2ENX

6W, 8B credits to UE literacy (R/W/B)

This course leads to a university approved course.

## **L2/L3 ENGLISH VOCATIONAL (L2/L3 ENV)**

*This course follows on from L1ENE/L1ENL. This course may lead to L2ENE.*

This course will focus on the reading and writing skills necessary for competent, functional literacy in the future workplace and the wider world. Basic skills will be emphasised. This course will provide students with the opportunity to gain Level 3 credits while developing their communication skills. Students may select this course in Year 12 or Year 13.

Teacher in charge - Ms Katherine Thomas

### **Students in this course will be working towards**

20 credits that are internally assessed

Course endorsement is not possible in L2 and L3ENV

This course is not university approved.

## **L3 ENGLISH (L3ENE)**

*This course follows on from L2ENE/L2ENG*

This course will consist of a combination of internal and external standards and is aimed at all students who enjoy experiencing texts that challenge and interest them. Students will develop an understanding of literary theory while exploring an extensive range of classic and modern literature. Students will present a formal seminar on a novel they have read and studied. This course will challenge students to develop and extend their reading and writing skills. This programme will provide the opportunity to gain UE Literacy.

Teacher in charge – Mrs Keli Sheblom

### **Students in this course will be working towards**

13 credits that are internally assessed and 8 credits that are externally assessed.

4R, 10W, 4B credits to UE literacy (R/W/B)

Course endorsement is possible in L3ENE

This course is a university approved course.

### L3 ENGLISH EXTENSION (L3ENX\*)

*This course follows on from L2ENE/L2ENX*

This course is aimed at our highest achieving English scholars who have shown a strong aptitude and passion for the subject. The course consists of a combination of internal and external standards and is aimed at all students who enjoy experiencing texts that challenge and interest them. It will be strongly based on literary theory, a wide range of literature, and will focus on extending reading and writing skills. The course will provide the opportunity to gain UE Literacy. Students in this course are expected to sit the English Scholarship exam at the end of the year. This is an invite only course.

Teacher in charge - Ms Maria Hughes

#### **Students in this course will be working towards**

13 credits that are internally assessed and 8 credits that are externally assessed.

4R, 10W, 4B, credits to UE Literacy (R/W/B)

Course endorsement is possible in L3ENX

This course is a university approved course.

### L2 MEDIA STUDIES (L2MDS)

*This course leads to L3MDS*

In this course students will develop their keen interest in the media, from films to the internet, and its use to reflect and affect the social, political, historical and economic climate of the time in which they were made. Within this course we will look at the manipulation of the press, the influence of social media, how narrative techniques drive directorial decision making in films and how our heroes and villains reflect the socio-political concerns of the time. A large portion of this course is dedicated to practical film making where students are challenged to plan, design and produce a short film which requires a significant time commitment in Term 2.

Teacher in charge - Miss Adrienne Bishop

#### **Students in this course will be working towards**

14 credits that are internally assessed and 4 credits that are externally assessed

Course endorsement is possible in L2MDS

4B credits to UE literacy (R/W/B)

This course leads to a university approved course.



## L3 MEDIA STUDIES (L3MDS)

*This course follows on from L2MDS*

In this course students will develop their keen interest in the media as an industry and its cause and effect relationship with its audience. We will focus on exploring the way a media text can be read in different ways dependent upon the audience's own experience of the world around them. Within this course we will look at how aspects of a director's style influence the reading of a text, aspects of genre and how the controls of a media industry reflect the products on the market. A large portion of this course is dedicated to practical film making where students are challenged to plan, design, and produce an 8 minute short film which requires a significant time commitment in Term 1.

Teacher in charge - Miss Adrienne Bishop

### **Students in this course will be working towards**

13 credits that are internally assessed and 4 credits that are externally assessed

4B credits to UE literacy (R/W/B)

Course endorsement is possible in L3MDS

This course is a university approved course.

## EAP & LANGUAGES

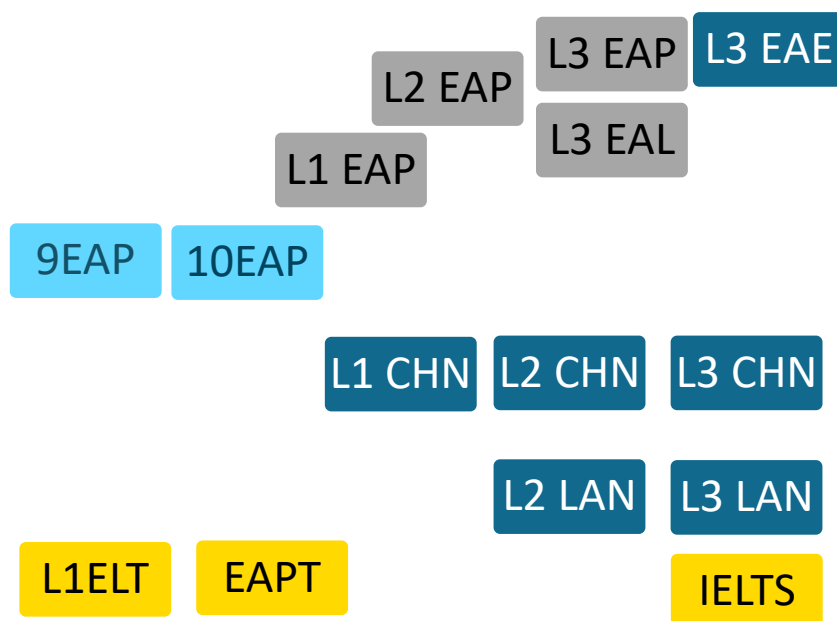
Head of Faculty – Victoria Yun

Ext 879

[vyun@lbc.school.nz](mailto:vyun@lbc.school.nz)

### EAP & LANGUAGES

NOTE: The EAP courses are designed for English language learners, to develop their general language skills and prepare students for the increased demands of academic English. Courses will be tailored to suit individuals' needs to maximise students' progress. All students will be assessed internally throughout the year. Pathway through the senior EAP courses will depend on English level of individual student.



### ENGLISH FOR ACADEMIC PURPOSES TRANSITION (EAPT)

*This course leads to higher levels of EAP*

This course is a transition course designed for English language learners who have Beginners' / post-Beginners' English skills on arrival to LBC. The focus is on developing students' English language skills, as well as their confidence in language use, so that they can go on to access what is taught in mainstream subjects. The course has a strong focus on building general vocabulary and simple grammatical structures required for further studies at Long Bay College.

Teacher in charge – Mrs Victoria Yun

## LEVEL 1 LITERACY FOR ENGLISH LANGUAGE LEARNERS (L1ELT)

*This course does not lead to further courses*

This course is specifically designed for English language learners who have not gained Level 1 literacy. Students work through two English standards which involved a study of verbal language, as well as a film study. Scaffolding based on students' unique prior knowledge, home culture, and experiences is used to broaden skills in analysis and critical thinking. English language skills are also integrated into the course to support the on-going English language learning of students. Students will also sit the literacy co-requisite exams as part of this course.

Teacher in charge – Mrs Victoria Yun

### **Students in this course will be working towards**

10 credits that are internally assessed and 0 credits that are externally assessed

Course endorsement is not possible in L1ELT

This course does not lead to a university approved course.

## YEAR 9 ENGLISH FOR ACADEMIC PURPOSES (9EAP)

*This course leads to 10 English for Academic Purposes*

This course is a multi-level course designed for year 9 students for whom English is an additional language. The focus is on developing students' English language skills for general and academic purposes through a topic-based course with an emphasis on learning about a range of global issues and their effects on New Zealand and the students' home countries. Students placed in this course will also participate in a culture-oriented social studies course that complements 9EAP.

Teacher in charge - Mrs Yao Lu

## YEAR 10 ENGLISH FOR ACADEMIC PURPOSES (10EAP)

*This course leads to senior EAP courses*

This is a multi-level course designed for year 10 students for whom English is an additional language. The focus is on developing students' English language skills for general and academic purposes at a higher level through a topic-based course with an emphasis on learning about a range of global issues and their effects on New Zealand and the students' home countries. Students placed in this course will also participate in a culture-oriented social studies course that complements 10EAP.

Teacher in charge - Mrs Yao Lu

## L1 ENGLISH FOR ACADEMIC PURPOSES (L1EAP)

*This course can follow on from 10EAP and/or EAPT, and leads to L2EAP*

This course is designed for English language learners at Pre-Intermediate level. The focus is on developing students' reading, writing, speaking, listening and vocabulary skills for academic purposes. The course aims to support students' work in other subjects across the curriculum.

Teacher in charge – Mrs Victoria Yun

### **Students in this course will be working towards**

25 credits that are internally assessed and 0 credits that are externally assessed

Course endorsement is not possible in L1EAP

This course does not lead to a university approved course.

## L2 ENGLISH FOR ACADEMIC PURPOSES (L2EAP)

*This course can follow on from 10EAP and/or L1EAP and leads to L3EAP*

This course is designed for English language learners at intermediate level. The focus is on extending students' academic English by using topics, text, and task types they will encounter in other subjects. The course will also continue to develop students' general English language skills.

Teacher in charge - Mrs Victoria Yun

**Students in this course will be working towards**

20 credits that are internally assessed and 0 credits that are externally assessed

Course endorsement is not possible in L2EAP

This course does not lead to a university approved course.

## L3 ENGLISH FOR ACADEMIC FOUNDATION (L3EAL)

*This course follows on from L2EAP and leads to L3EAP*

This course focuses on practical and relevant university preparation topics and skills to prepare students for the transition to a foundation course in preparation for tertiary studies or other chosen further study. The course will allow students to strengthen their English language skills in listening, reading, writing, and speaking in a range of familiar topics.

Teacher in charge - Mrs Victoria Yun

**Students in this course will be working towards**

25 credits that are internally assessed and 0 credits that are externally assessed

Course endorsement is not possible in L3EAL

This course does not lead to a university approved course.

## L3 ENGLISH FOR ACADEMIC PURPOSES (L3EAP)

*This course follows on from L2EAP and leads to L3EAE*

This course aims to equip students with the English skills necessary for academic study at senior school level. The focus is on developing more advanced language skills required for academic writing, inquiry-based learning, and formal speaking. The core language skills of reading, writing, listening, speaking and vocabulary are covered through a variety of topics.

Teacher in charge - Mrs Victoria Yun

**Students in this course will be working towards**

20 credits that are internally assessed and 0 credits that are externally assessed

Course endorsement is not possible in L3EAP

This course does not lead to a university approved course.

### L3 ENGLISH FOR ACADEMIC PURPOSES EXTENSION (L3EAE)

This course focuses on meeting the literacy requirements for New Zealand University Entrance. Successful completion of the advanced reading and writing components of this course will equip students with the level and skills of academic English required by those aiming to go on to university both in New Zealand and overseas. Topics covered in the course are based on global issues and actions, with a core focus being a comparison of New Zealand and other countries around the world.

Teacher in charge - Mrs Victoria Yun

**Students in this course will be working towards**

22 credits that are internally assessed and 0 credits that are externally assessed. This includes

6 R and 6 W towards UE Literacy (R/W/B)

Course endorsement is not possible in L3EAE

This course is a university approved course.

### IELTS PREPARATION COURSE (IELTS)

This course is designed for English language learners who are studying short term at Long Bay College. It will prepare students for all four skills assessed in the International English Language Testing System (IELTS). Students who wish to take the exam can do so at the local IELTS centre.

Teacher in charge – Mrs Jayne Jones

Course endorsement is not possible in IELTS

This course is not university approved.

### L1 CHINESE (L1CHN)

This course is aimed at students who already have a prior knowledge of basic Chinese. The focus is on extending students' ability to communicate effectively in Chinese, with equal emphasis on reading, writing, speaking, and listening. Students will also study more about Chinese culture and customs as an integral part of the course. This course is suitable for students who want to improve and maintain their Chinese language and cultural competency.

Teacher in charge - Mrs Xiaoman Shao

**Students in this course will be working towards**

10 credits that are internally assessed and 5 credits that are externally assessed.

Course endorsement is possible in L1CHN

This course leads to a university approved course.



## L2 CHINESE (L2CHN)

*This course follows on from L1CHN and leads to L3CHN*

This course further develops students' fluency in spoken Chinese whilst extending their ability to understand and express themselves at a higher level in written Chinese. It will also focus on critical thinking and question-answering strategies aimed at high achievement in NCEA. Students will benefit from further development of Chinese language competency and cultural knowledge.

Teacher in charge - Mrs Xiaoman Shao

**Students in this course will be working towards**

14 credits that are internally assessed and 10 credits that are externally assessed.

0 Credits towards UE literacy (R/W/B)

Course endorsement is possible in L2CHN

This course leads to a university approved course.

## L3 CHINESE (L3CHN)

*This course follows on from L2CHN*

This course aims to increase fluency, comprehension and confidence in authentic language situations, as well as understanding of the culture differences. Students learn to communicate sophisticated information and opinions through more complex text types and authentic materials based on current social issues and popular topics among young people in China. It will also focus on higher level critical thinking and question-answering strategies aimed at high achievement in NCEA. L3CHN will also prepare students with the linguistic competence, knowledge and skills to be successful in the Scholarship Chinese exam.

Teacher in charge - Mrs Xiaoman Shao

**Students in this course will be working towards**

14 credits that are internally assessed and 10 credits that are externally assessed

0 Credits towards UE literacy (R/W/B)

Course endorsement is possible in L3CHN

This course is a university approved course.

## L2 LANGUAGES FOR NATIVE SPEAKERS (L2LAN)

This course is intended for native speakers of other international languages that are assessed as part of L2 NCEA (French, German, Japanese, Korean, Samoan, Spanish). It will prepare students with the necessary skills to succeed in the internal assessments for speaking and writing and the external exams for listening and reading. The course will focus on contemporary topics across different countries and cultures with emphasis on building understanding behind why different groups have different points of view and perspectives. It will also focus on the application of more complex language structures, critical thinking and question-answering strategies aimed at high achievement in NCEA.

Teacher in charge – Mrs Jayne Jones

**Students in this course will be working towards**

14 credits that are internally assessed and 10 credits that are externally assessed.

0 Credits towards UE literacy (R/W/B)

Course endorsement is possible in L2LAN

This course leads to a university approved course.

## L3 LANGUAGES FOR NATIVE SPEAKERS (L3LAN)

*This course follows on from L2 LAN*

This course is intended for native speakers of other international languages that are assessed as part of L3 NCEA (French, German, Japanese, Korean, Samoan, Spanish). It will prepare students with the necessary skills to succeed in the internal assessments for speaking and writing and the external exams for listening and reading. The course will also focus on the application of advanced language structures, critical thinking and question-answering strategies aimed at high achievement in NCEA. Students aspiring to do Scholarship exams will also be prepared for the higher academic and linguistic demands required at this level as an integral part of the course.

Teacher in charge – Mrs Jayne Jones

**Students in this course will be working towards**

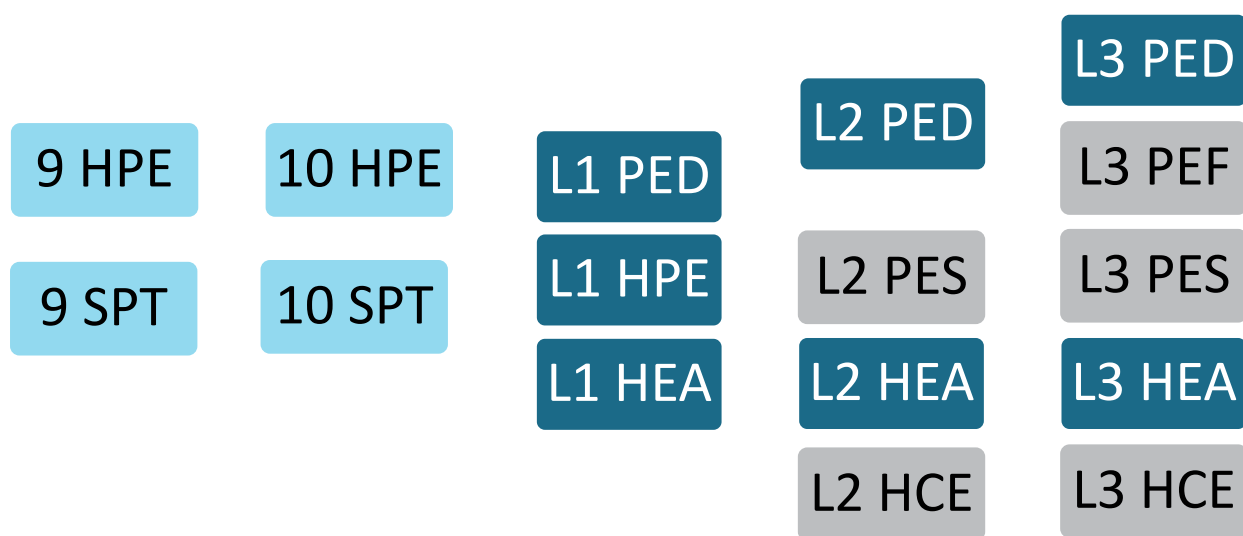
14 credits that are internally assessed and 10 credits that are externally assessed.

Course endorsement is possible in L3LAN

0 Credits towards UE literacy (R/W/B)

This course is university approved.

mgleeson@lbc.school.nz



*This course leads to 10HPE*

Health and Physical Education (HPE) is a practical and theoretical based subject. In Physical Education, students gain an appreciation of participating in team and individual activities, as well as developing and mastering physical and social skills. Students will also be given the opportunity to learn the skills necessary to work safely in our Latitude 36 Fitness hub. Health Education covers: healthy lifestyles, friendships and bullying, sexuality and relationship education and alcohol education.

Teacher in charge – Mr Kevin Parslow

*This course leads to 10SPT*

Students will use the context of sport and physical education to develop their understanding of basic sport science and athletic development.

Students will be extended in the knowledge and understanding around anatomy, biomechanics and exercise physiology. They will learn about and experience aspects of sports psychology as well challenging socio-cultural understanding.

Students will engage in learning in both practical and theoretical contexts.

Teacher in charge - Mr Kevin Parslow

## Y10 HEALTH AND PHYSICAL EDUCATION (10HPE)

*This course leads to L1HEA, L1PED, L1HPE*

Year 10 Health and Physical Education focuses on developing physical skills, thinking processes and aspects of Health Education. This course will have both practical and theoretical units of learning across the full year.

There will be a focus on developing students understanding of the key concepts from the Health and Physical Education curriculum as well as developing mental and physical skills from year 9.

Areas of study will include: Well-being, challenging attitudes and values, sexuality education, health promotion and mental health awareness.

Teacher in charge - Mr Kevin Parslow

## Y10 SPORTS SCIENCE AND ATHLETIC DEVELOPMENT (10SPT)

*This course leads to L1PED, L1HPE*

Students will use the context of sport and physical education to develop their understanding of sports science and athletic development. This course aims to challenge students to apply learning around aspects of anatomy, biomechanics and exercise physiology to their own sports. Learn and apply knowledge around methods and principles of training and analyse aspects of a healthy school environment.

Students will engage in learning in both practical and theoretical contexts.

Teacher in charge - Mr Kevin Parslow

## L1 HEALTH AND PHYSICAL EDUCATION (L1HPE)

*This course follows on from 10HPE and leads to L2HEA, L2PED, L2PES*

This course is a combined Health and Physical Education course which allows a breadth of choice at year 11. This course may also benefit students who don't consider themselves to be highly sport focused but enjoy the practical side of physical education and the underlying concepts of health.

Areas of study include:

- Teamwork - Tactics, Strategies and movement
- Hauora - Well-being, factors affecting.
- Anatomy, biomechanics and exercise physiology
- Decision making - Understanding factors affecting decisions we make.
- Personal, Interpersonal and Societal factors influencing Hauora.

Students will also have the opportunity to experience a range of practical activities as well as develop a deeper level of understanding of the underlying concepts of Health and Physical Education.

Teacher in charge - Mrs Mo Gleeson

**Students in this course will be working towards**

10 credits that are internally assessed and 5 credits that are externally assessed

Course endorsement is possible in L1HPE

This course leads to a university approved course.

## L1 HEALTH (L1HEA)

*This course follows on from 10HPE and leads to L2HEA*

Level 1 Health equips students with the foundation skills and knowledge to begin their pathway in Health Education. Health is an ever-growing industry with more opportunities opening up to students who choose this pathway. At level 1 students will learn about practical life skills and relevant Health issues.

This course is theoretically based and all assessments have a written format. Students will cover, in greater detail,

- Mental health education topics where Whanaungatanga / Connectedness feature,
- Relationships and sexuality education topics where Whanaungatanga / Connectedness feature
- Food education topics where Whanaungatanga / Connectedness feature.

Teacher in charge - Miss Lucy Doran

**Students in this course will be working towards**

10 credits that are internally assessed and 5 credits that are externally assessed

Course endorsement is possible in L1HEA

This course leads to a university approved course.

## L1 PHYSICAL EDUCATION (L1PED)

*This course follows on from 10HPE and leads to L2PED, L2PES*

The course is both theoretical and practical based and is designed for students who are highly competitive in sporting situations.

Students will cover in greater detail:

- Anatomy, biomechanical and physiological aspects of the body.
- Socio cultural understanding
- Technique analysis
- The effectiveness of how and why Kotahitanga is promoted in movement.
- Interpersonal skills in a range of activities
- Participation in a range of activities.

Teacher in charge - Mrs Mo Gleeson

**Students in this course will be working towards**

10 credits that are internally assessed and 5 credits that are externally assessed

Course endorsement is possible in L1PED.

This course leads to a university approved course.

## L2 EARLY CHILDHOOD EDUCATION (L2HCE)

*This course leads to L3HCE*

This course is designed for students who want a career pathway into the early childhood sector. Areas of study include understanding nutritional support for young children, developing aspects of well-being for children and demonstrating appropriate health and safety strategies to support young children.

The course aims to see students build useful knowledge and skills that would support entry into the work force. This is a unit standards based course and is not designed for students who are wanting to attend university.

Teacher in Charge – Miss Lucy Doran

**Students in this course will be working towards**

20 credits that are all internally assessed.

Course endorsement is not possible in L2HCE

This course does not lead to a university approved course.

## L2 HEALTH (L2HEA)

*This course follows on from L1HEA, L1HPE and leads to L3 HEA*

This course will further develop student's knowledge and skills that will prepare them for a broad range of health-related careers. Level 2 provides students the opportunity to have a hands-on approach to Health through our unique Health promotion standard which sees students implement their own projects within the school and community. Students look at mental health and resiliency focusing on strategies to support and improve this. Students will also learn how to analyse current adolescent health issues and look at the impact on New Zealand society as well as developing strategies to address issues around sexuality gender and identity.

Teacher in charge – Miss Lucy Doran

**Students in this course will be working towards**

15 credits that are internally assessed and 5 credits that are externally assessed

Course endorsement is possible in L2HEA

This course leads to a university approved course.

## L2 PHYSICAL EDUCATION (L2PED)

*This course follows on from L1PED, L1HPE and leads to L3 PED, L3PES, L3PEF*

This course focuses on developing the knowledge and skills related to physical activity. Students will study theoretical and practical aspects of physical education related to: personal performance, knowledge of anatomy, biomechanics and skill learning, leadership roles, safety management, the significance of participation in physical activity and principles and methods of training. A three-day outdoor education trip to Shakespear Regional Park is the highlight of the year.

Teacher in charge - Mrs Mo Gleeson

**Students in this course will be working towards**

20 credits that are internally assessed and 0 credits that are externally assessed

Course endorsement is possible in L2PED

This course leads to a university approved course.

## L2 PRACTICAL PHYSICAL EDUCATION AND SPORTS LEADERSHIP (L2PES)

*This course follows on from L1PED, L1HPE and leads to L3 PES*

This course is both practical and theoretical. It encompasses leadership and safety (including a three-day outdoor education trip to Shakespear Regional Park), social responsibility, practical performance and demonstrating safe exercising techniques. Students will learn the traditional game of Ki-O-Rahi, as well as being given the opportunity to develop their leadership, safety and coaching skills. This course is targeted for students who are not considering future university study and cannot be taken with L2PED.

Teacher in charge - Mrs Mo Gleeson

**Students in this course will be working towards**

19 credits that are internally assessed and 0 credits that are externally assessed

Course endorsement is possible in L2PES

This course does not lead to a university approved course.

## L3 EARLY CHILDHOOD EDUCATION (L3HCE)

*This course follows on from L2HEA and L2 HCE*

Level 3 early childhood follows on from the Level 2 early childhood development course and continue to build students' knowledge and skills in the education and care of children in an early childhood education setting.

This course aims to prepare students to advance into higher-level early childhood education and/or care. The course gives students real industry experience (with links to the gateway programme) as well as a chance to develop their understanding of child development.

This course could be of interest to students who are thinking of further study in any areas of health science, medicine, law, psychology or social work.

Teacher in charge - Miss Lucy Doran

**Students in this course will be working towards**

22 credits that are internally assessed

Course endorsement is not possible in L3HCE

This course does not lead to a university approved course.

### L3 HEALTH (L3HEA)

*This course follows on from L2HEA*

Level 3 Health is designed to look at current issues relevant to New Zealand and other countries. It covers current New Zealand health issues such as family violence, evaluating New Zealand health practices in relation to treating a current illness such as cancer or depression, international health issues; focusing on global poverty, current ethical issues relating to well-being looking at topics such as euthanasia or abortion.

This course could be of interest to students who are thinking of further study in any areas of health science, medicine, law, psychology or social work.

Teacher in charge - Miss Lucy Doran

**Students in this course will be working towards**

14 credits that are internally assessed and 5 credits that are externally assessed

Course endorsement is possible in L3HEA

14R, 5B credits to UE literacy (R/W/B)

This course is a university approved course.

### L3 PHYSICAL EDUCATION (L3PED)

*This course follows on from L2PED*

The course aims to develop and apply the knowledge base developed in Level 1 and 2 Physical Education. This includes strategies to improve performance, biomechanics, anatomy and physiology. This course also covers applying safety management strategies, which takes students on a 1-day outdoor education trip. A research assignment on current issues in NZ Sport and physical education is also offered. Students can choose to participate in the 'Tough Guy' challenge as part of their practical assessment.

Teacher in charge - Mrs Mo Gleeson

**Students in this course will be working towards**

18 credits that are internally assessed and 0 credits that are externally assessed

Course endorsement is possible in L3PED

7R credits to UE literacy (R/W/B)

This course is a university approved course.

### L3 PRACTICAL PHYSICAL EDUCATION AND SPORTS LEADERSHIP (L3PES)

*This course follows on from L2PES, L2PED*

This course aims to develop the leaderships skills learnt in both Level 2 Physical Education courses. Students will be given the opportunity to develop their coaching skills through the completion of the Growing Coaches PLUS Award. Students will also look at how to identify and manage risks and injuries in sporting situations as well as complete their own practical performance assessment. This course is targeted for students who are not considering further study at University.

Teacher in charge - Mrs Mo Gleeson

**Students in this course will be working towards**

23 credits that are internally assessed and 0 credits that are externally assessed

Course endorsement is not possible in L3PES

This course is not university approved.



### L3 FITNESS STUDIES (L3PEF)

*This course follows on from L2PED, L2PES*

The course will have a mixture of theoretical and practical components, as well as some work placement in the schools Latitude 36 fitness hub to support usage with the junior students. The course and standards can be designed/modified to suit needs of the students, especially if some students have an interest in furthering their ambitions for the fitness industry as a career.

This course will support students who wish to consider careers in sport and recreation, coaching, and personal training.

**Students in this course will be working towards**

18 credits that are internally assessed and 0 credits that are externally assessed

Course endorsement is not possible in L3PEF

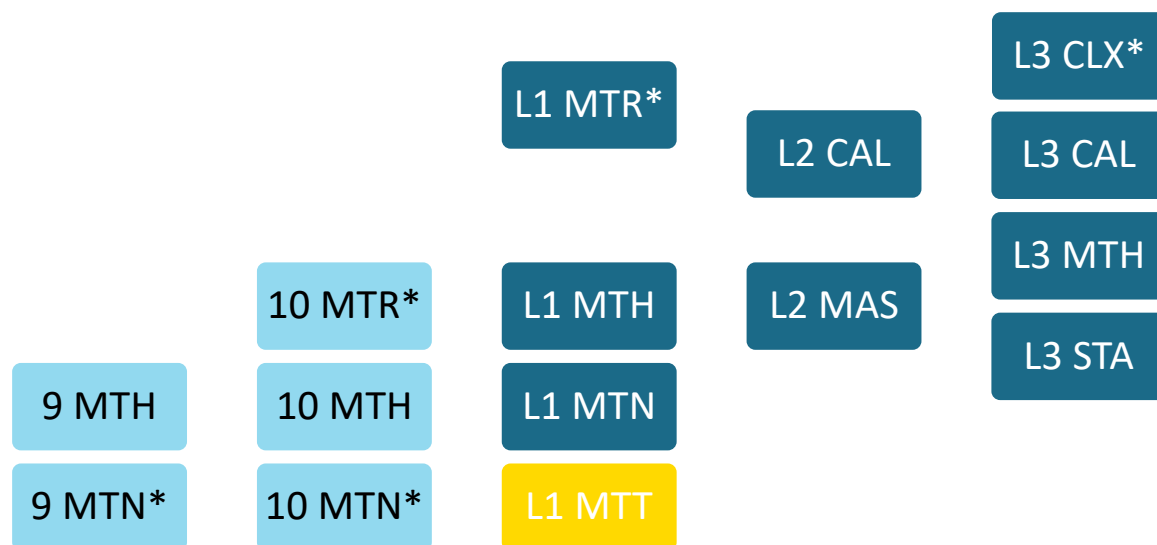
This course is not university approved.

Teacher in charge Mr Kevin Parslow.

# MATHEMATICS

Head of Faculty –Mr Tim Spratt Ext 873

[tspratt@lbc.school.nz](mailto:tspratt@lbc.school.nz)



## Y9 MATHEMATICS (9MTH)

*This course leads to 10MTH*

Using entrance data as a baseline, students will progress through subsequent national curriculum levels.

Teacher in charge - Mrs Kate Kim

## Y9 MATHEMATICS TARGETED (9MTN\*)

*This course supports students progressing to 10MTH*

This course is in response to students' needs and teacher recommendations. This course offers 4 periods of additional support for students who are tracking just below the numeracy corequisite success threshold to work on preparing them to sit the assessment in Year 10. It is a one semester course that students can either complete in Year 9 or Year 10 with a focus on numeracy skills needed in the numeracy corequisite.

Teacher in charge - Mrs Kate Kim

## Y10 MATHEMATICS (10MTH)

*This course leads to L1MTH or L1MTN*

Students will engage in thinking mathematically and statistically in a range of meaningful contexts, across all strands of the New Zealand Curriculum, at an appropriate level. Students will sit the Numeracy co-requisite US32406 or US32412 during Year 10.

Students who pass the numeracy corequisite progress to L1MTH and those who are not successful yet will move onto the L1MTN course.

Teacher in charge – Mrs Kate Kim

## Y10 MATHEMATICS TARGETED (10MTN\*)

*This course leads to L1MTH or L1MTN*

*This course supports students progressing to 10MTH*

This course is in response to students' needs and teacher recommendations. This course offers 4 periods of additional support for students who are tracking just below the numeracy corequisite success threshold to work on preparing them to sit the assessment in Year 10. It is a one semester course that students either complete in Year 9 or Year 10 with a focus on numeracy skills needed in the numeracy corequisite.

Teacher in charge – Mrs Kate Kim

## Y10 MATHEMATICS ENRICHMENT (10MTR\*)

*This course leads to L1 MTR*

This course is selected based on academic achievements during Year 9 across classroom learning and engagement with the extra-curricular Mathematics enrichment activities available in school. A graphic calculator and electronic device (laptop or tablet) are required for this course.

This course leads to a university approved course.

Teacher in charge - Ms. Tatyana Strelets

**Students in this course will be working towards**

5 credits, 10 credits will be internally assessed, and 5 credits will be externally assessed.

## L1 MATHEMATICS (L1MTH)

*This course follow from 10MTH (students who passed numeracy co-requisite) and leads to L2 CLX, L2CAL and L2MAS*

All students complete two internally assessments each worth five credits and one external assessment for five credits. This means students has over 10 internal credits and 5 external credits available for a total of 15 credits at Level1.

Teacher in Charge – Miss Sarah Meyer

**Students in this course will be working towards**

15 credits, 10 internal and 5 external.

Course endorsement is possible in L1MTH.

This course leads to a university approved course.

## L1 MATHEMATICS TRANSITION (L1MTT)

*This course is designed for English language learners*

All students complete two internally assessed standards across the academic year (each worth 5 credits) for a total of 10 credits at Level 1. Additionally, students will have an opportunity to complete the Numeracy standard US32406 for 10 numeracy credits.

Teacher in charge – Miss Sarah Meyer

**Students in this course will be working towards**

Course endorsement is not possible in L1MTT.

This course leads to a university approved course.

## L1 MATHEMATICS NUMERACY (L1MTN)

*This course follows on from 10MTH (for students who have not passed the numeracy co-requisite) and leads to L2 CLX, L2CAL and L2MAS*

*This course leads to L2CAL or L2MAS. This course is to support students in attaining the required numeracy credits for NCEA certification.*

All students complete two internally assessed standards across the academic year (each worth 5 credits) for a total of 10 credits at Level 1. Additionally, students will have an opportunity to complete the Numeracy standard US32406 for 10 numeracy credits.

Teacher in charge – Miss Sarah Meyer

**Students in this course will be working towards**

Course endorsement is not possible in this L1MTN.

This course leads to a university approved course.

## L1 MATHEMATICS ENRICHMENT\* (L1MTR)

*This course follows on from 10MTR and leads to L2CAL, L2 CLX or L2MAS*

This course will provide students with the necessary skills to progress to the Level 3 Calculus course. An appropriate selection of internal and external Level 2 standards will be offered.

Teacher in charge - Ms. Tatyana Strelets

**Students in this course will be working towards**

9 credits that are internally assessed and 9 credits that are externally assessed at level 2 and 5 credits externally assessed at Level 3..

0 Credits towards UE literacy (R/W/B).

Course endorsement at NCEA Level 2 is possible in L1MTR.

This course leads to a university approved course.

## L2 MATHEMATICS AND STATISTICS (L2MAS)

*This course follows on from L3STA OR L3MTH*

This course builds on the knowledge and skills gained in Year 11. It will provide students with the necessary skills to progress to the Level 3 Statistics or Level 3 Mathematics courses.

Teacher in charge – Mr. Heehwan Kim

**Students in this course will be working towards**

0 Credits towards UE literacy (R/W/B).

Course endorsement is possible in L2MAS.

This course leads to a university approved course.

## L2 CALCULUS (L2CAL)

*This course follows on from L1MTR, L1MTH and leads to L3CAL*

This course will provide students with the necessary skills to progress to the Level 3 Calculus course. An appropriate selection of internal and external Level 2 standards will be offered.

Teacher in charge – Ms. Tatyana Strelets

0 Credits towards UE literacy (R/W/B)

Course endorsement is possible in L2CAL.

This course leads to a university approved course.

## L3 MATHEMATICS (L3MTH)

*This course follows on from L2MTH (now discontinued from 2025), L2 STA or L2CAL*

The topics covered by this course are based on both statistics and algebra. This course gives students the opportunity to gain up to 20 credits from Level 3 from the approved university entry list.

Teacher in charge – Miss Sarah Meyer

**Students in this course will be working towards**

16 credits that are internally assessed and 4 credits that are externally assessed.

Course endorsement is possible in L3MTH.

0 Credits towards UE literacy (R/W/B).

This course is a university approved course.

## L3 STATISTICS (L3STA)

*This course follows on from L2STA and L2MTH in 2023*

This course is appropriate for students wishing to continue biological and social sciences, medicine, commerce and management or any field in which the collection, analysis and interpretation of quantitative data is important.

Teacher in charge – Mr. Heehwan Kim

**Students in this course will be working towards**

16 credits that are internally assessed and 4 credits that are externally assessed.

Course endorsement is possible in L3STA.

0 Credits towards UE literacy (R/W/B).

This course is a university approved course.

### L3 CALCULUS (L3CAL)

*This course follows on from L2CAL*

This course is appropriate for students wishing to continue in mathematics, physical sciences, engineering or any field in which analysis of mathematical relationships is an important tool. Topics including algebra, trigonometry, and calculus from Level 2 Mathematics and new one such as complex numbers and differential equations are introduced.

Teacher in charge – Ms. Tatyana Strelets

#### **Students in this course will be working towards**

13 credits that are internally assessed and 17 credits that are externally assessed.

0 Credits towards UE literacy (R/W/B).

Course endorsement is possible in L3CAL.

This course is a university approved course.

### L3 CALCULUS EXTENSION (L3CLX)

*This course follows on from L2CAL*

This course is appropriate for students wishing to continue in mathematics, physical sciences, engineering or any field in which analysis of mathematical relationships is an important tool. Topics including algebra, trigonometry, and calculus from Level 2 Mathematics and new one such as complex numbers and differential equations are introduced. It is a selected course with places being offered to students who have achieved high academic success at Level 2 Calculus or equivalent enrichment course.

Teacher in charge – Ms. Tatyana Strelets

#### **Students in this course will be working towards**

13 credits that are internally assessed and 12 credits that are externally assessed.

0 Credits towards UE literacy (R/W/B).

Course endorsement is possible in L3CLX.

This course is a university approved course.

## PERFORMING ARTS

Head of Faculty –Ms Dannielle Savage

Ext 894

[dsavage@lbc.school.nz](mailto:dsavage@lbc.school.nz)

9 DAN

10 DAN

L1 DAN

L2 DAN

L3 DAN

9 DRA

10 DRA

L1 DRA

L2 DRA

L3 DRA

9 MSC

10 MSC

9 MSP

10 MSP

L1 MUS

L2 MUS

L3 MUS

### Y9 DANCE (9DAN)

*This course leads to 10DAN*

Year 9 Dance aims to introduce basic skills that students need to perform and choreograph dance. Reflective discussions will be incorporated into each topic and support each new skill as it is learned. Appropriate dance clothing is compulsory. Dance students will develop self-management and interpersonal skills, while building self-confidence and exploring their creative self. This course is suitable for all students, beginners to experienced.

Teacher in charge - Ms Kiaya Lupi

### Y9 DRAMA (9DRA)

*This course leads to 10DRA*

This half year course is designed to expand students' abilities to communicate with, understand and to work well with others and collaborate. Basic acting, movement, voice and character techniques are used to teach skills useful in classroom and extracurricular areas. This course includes dancing, acting roles, movement, character work and performance to other year levels in the Auditorium. The appropriate Drama black clothing is required.

Teacher in charge – Ms Dannielle Savage

### Y9 MUSIC ROCK-POP (9MSC)

*This course leads to 10MSC*

This course is an introductory exploration of Music consisting of the following components:

Instrumental Performances, Introduction to Music Theory, Producing Music on a Digital Audio Workstation, Group Performance, Listening Exercises using the Elements of Music, Introduction to the Genres of Contemporary Music. Students will have the opportunity to play and perform on the guitar, drums, and a variety of percussion instruments.

Teacher in charge – Mrs Rhianna Make

[Click to return to Contents](#)

Version 1.2– 01/07/2024

## **Y9 PERFORMANCE MUSIC (9MSP)**

*This course leads to 10MSP*

This course explores the many aspects of Music with a focus on developing individual and group performance skills, composition skills (writing music) and music theory skills. Students in the Performance Music class will contribute once a week to a large class ensemble (Concert Band, Choir). It would be beneficial for students to have some experience on an instrument for this course.

Teacher in charge – Mrs Rhianna Maker

## **Y10 DANCE (10DAN)**

*This course leads to L1 DAN*

Year 10 Dance builds and supports learning of basic techniques and skills to perform, choreograph and understand dance. During the semester students will view, discuss and experiment with different genres and styles. Thematic creations and performance of their own dances are important aspects of this course along with a research project to demonstrate understanding of styles. Appropriate dance clothing is required.

Teacher in charge - Ms Kiaya Lupi

## **Y10 DRAMA (10DRA)**

*This course leads to L1DRA*

This course stresses creativity, communication, group work and technical areas such as movement, voice, improvisation and working from scripts. The course includes elements of: Improvisation, Devised Theatre, an introduction to Greek Theatre, Melodrama and Physical Theatre. The appropriate Drama black clothing is required.

Teacher in charge – Ms Dannielle Savage

## **Y10 MUSIC ROCK-POP (10MSC)**

*This course follows on from 9MSC leads to L1MUS*

This course builds on the 9 MSC course and a further exploration of Music consisting of the following components: Instrumental Performances of Guitar, Drums and/or an instrument of their choosing, Continuation of Music Theory in preparation for L1MUS, Producing Music on a Digital Audio Workstation, Group Performance, Listening Exercises using the Elements of Music, Genres and History of Contemporary Music. Students will have the opportunity to play and perform on the guitar, drums, and a variety of percussion instruments.

Teacher in charge – Mrs Rhianna Maker

## **Y10 MUSIC PERFROMANCE (10 MSP)**

*This course leads to L1 MUS*

This course builds on the skills learnt in the Year 9 MSP course. This includes the more advanced creation, production and performance of Music. Within the performance aspects, students will also have the opportunity to explore digital music, composition, music theory and the basics of an unfamiliar classroom instrument such as the guitar/ukulele or piano/keyboard.

Teacher in charge – Mrs Rhianna Maker



## L1 DANCE (L1DAN)

*This course follows on from 10DAN and leads to L2DAN*

This course builds on the skills and techniques learnt in the previous year. Students will further develop their ability to perform, choreograph and demonstrate knowledge of dance genres effectively. Students will learn a range of dance styles and will be given the opportunity to work individually and as part of a group. Knowledge and understanding is tested in written external exams for students. Appropriate dance clothing is required. Students will perform in the dance showcase evening.

Teacher in charge - Ms Kiaya Lupi

**Students in this course will be working towards**

10 credits that are internally assessed and 5 credits that are externally assessed

Course endorsement is possible in L1DAN

This course leads to a university approved course.

## L1 DRAMA (L1DRA)

*This course follows on from 10DRA and leads to L2DRA*

Students build on the techniques learned in the previous year, including elements and conventions of theatre and use these in class work and performance. They study a theatre style and undertake an acting role in the class production. Knowledge and understanding of their work is tested in written feedback and in external Achievement Standards. Trips to live theatre performances are a requirement of one external exam. The appropriate Drama black clothing is required.

Teacher in charge - Ms Dannielle Savage

**Students in this course will be working towards**

5 credits that are internally assessed and 10 credits that are externally assessed

Course endorsement is possible in L1DRA

This course leads to a university approved course.

## L1 MUSIC (L1MUS)

*This course follows on from 10 MSP and 10 MSC and leads to L2MUS*

This course is divided into the following areas: Performance – Students are required to perform pieces of music on their chosen performance instrument/voice, as a soloist. They also have the option to perform as a member of a group. Composition – Students learn composing skills and compose two original pieces of music. Score Reading: Students identify, describe and demonstrate understanding and application of theory and musical elements used in music scores and students will develop listening skills through melodic and rhythmic transcription.

All students must be learning a musical instrument through formal tuition either privately or through the school itinerant programme.

Teacher in charge - Mrs Rhianna Maker

**Students in this course will be working towards**

10 credits that are internally assessed and 5 credits that are externally assessed.

Course endorsement is possible in L1MUS

This course leads to a university approved course.

## L2 DANCE (L2DAN)

*This course follows on from L1DAN and leads to L3DAN*

This course builds on the skills learnt in Level 1. Students must rely on their own skills to choreograph a dance for a group of dancers communicating and understanding specific intentions. They will continue to develop their skills of performing in a group, pairs and as a soloist. Analysing their own work and the work of others becomes increasingly important this year. Knowledge, understanding and contexts is tested in Students written external exams. Appropriate dance clothing is required. Students will perform in the dance showcase.

Teacher in charge - Ms Kiaya Lupi

**Students in this course will be working towards**

16 credits that are internally assessed and 4 credits that are externally assessed

Course endorsement is possible in L2DAN

0 Credits towards UE literacy (R/W/B)

This course leads to a university approved course.

## L2 DRAMA (L2DRA)

*This course follows on from L1DRA and leads to L3DRA*

This subject is offered to students who have a strong interest in the Performing Arts. The course includes taking part in the class production, the study of a theatre form, and the study of acting techniques. Emphasis will be placed on the practical and performance aspects of Drama. Students will be expected to take part in class workshop situations. Written reflection and analysis are important parts of the course. Trips to live theatre performances are a requirement for the external exam and the appropriate Drama black clothing along with a workbook.

Teacher in charge - Ms Dannielle Savage

**Students in this course will be working towards**

14 credits that are internally assessed and 4 credits that are externally assessed

Course endorsement is possible in L2DRA

13R, 4W, 4 B credits to UE literacy (R/W/B)

This course leads to a university approved course.

## L2 MUSIC (L2MUS)

*This course follows on from L1MUS and leads to L3MUS*

This course is divided into four sections: Section A: Students are required to perform pieces of music on their chosen performance instrument/voice, as a soloist and have the option to perform as a member of a group. Section B: Students are required to compose a selection of music pieces and create an instrumentation. Section C: Students are required to describe the theoretical basis of a variety of music scores and to demonstrate aural/listening skills. Students must be learning a musical instrument through formal tuition either privately or through the school itinerant programme.

Teacher in charge - Mrs Rhianna Maker

**Students in this course will be working towards**

16 credits internally assessed, 4 credits externally, Assessed with 4 optional internal and 4 optional external credits.

Course endorsement is possible in L2MUS

0 Credits towards UE literacy (R/W/B)

This course leads to a university approved course.

### L3 DANCE (L3DAN)

*This course follows on from L2DAN*

This intensive and creative course builds on the skills learned in Level 2. Students will produce a dance in groups and learn a repertoire of contrasting dances from different genres to display the varying techniques. Students will develop their skills further to analyse their own learning and performance practices as well as their own and others' choreography. This course explores knowledge and understanding of dance in Aotearoa in a written external exam. Appropriate dance clothing is required.

Students will perform in the dance showcase evening.

Teacher in charge - Ms Kiaya Lupi

**Students in this course will be working towards**

14 credits that are internally assessed and 4 credits that are externally assessed with optional standard 3.1 8 credits.

Course endorsement is possible in L3DAN

4B credits to UE literacy (R/W/B)

This course is a university approved course.

### L3 DRAMA (L3DRA)

*This course follows on from L2DRA*

This is a course for people who love performing! It is a concentrated, fast-moving course which builds on skills developed in the Level 2 Drama course. The emphasis is placed on the students' personal growth and knowledge of themselves. Initiative and self-motivation are important requirements for this course. The course is of a very practical nature and active participation is essential. Performance (both group and solo) is an integral part. Written reflection and analysis support all tasks. Trips to live theatre performances are a requirement for the external exam along with appropriate Drama black clothing and a workbook.

Teacher in charge – Ms Dannielle Savage

**Students in this course will be working towards**

14 credits that are internally assessed and 4 credits that are externally assessed

Course endorsement is possible in L3DRA

9R, 4W, 4B credits to UE literacy (R/W/B)

This course is a university approved course.

### L3 MUSIC (L3MUS)

*This course follows on from L2MUS*

Students get to choose from a range of standards that reflect their strengths and interests. The course is divided into: Performance: Performing 2 programmes of music as a featured soloist and/or 1 programme as a member of a group. Composition/ arrangement: Creating portfolios of music compositions including song writing) and/or arrangements of specific pieces of music. Research: In depth research into a Music topic of student's choice. External standards: -Students study advanced harmonic and tonal conventions in a range of scores.

Teacher in charge – Mrs Rhianna Maker

**Students in this course will be working towards up to:**

Students will complete between 14 – 24 credits dependent on their individual courses.

Course endorsement is possible in L3MUS

6R credits to UE literacy (R/W/B)

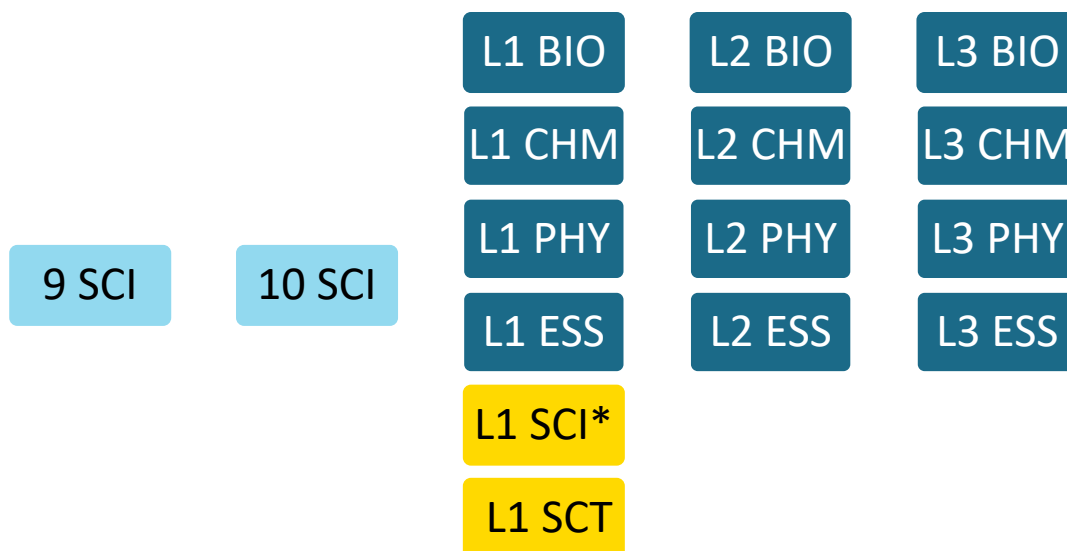
This course is a university approved course.

## SCIENCE

Head of Faculty – Mrs Samantha Lewis

Ext 871

[slewis@lbc.school.nz](mailto:slewis@lbc.school.nz)



### Y9 SCIENCE (9SCI)

*This course leads to 10SCI*

This course progresses from a general introduction to Scientific processes to some very important scientific principles in Biology, Chemistry, Physics and Earth and Space.

Teacher in charge - Mrs Gina O'Sullivan

### Y10 SCIENCE (10SCI)

*This course leads to L1SCI, L1BIO, L1CHM, L1ESS, L1PHY*

This course continues to explore a range of important scientific concepts. This course covers all four key strands of Science including Biology, Chemistry, Physics and Earth and Space Science.

Teacher in charge - Mrs Gina O'Sullivan

### L1 GENERAL SCIENCE (L1SCI\*)

This course builds on the concepts taught at Years 9 and 10 Science. It covers ideas relating to Biology, Chemistry, Earth and Space physics and practical investigation skills. It is completely internally assessed and targeted at students who have not achieved success in 9SCI and 10SCI.

Teacher in charge - Mrs Samantha Lewis

**Students in this course will be working towards**

15 credits that are internally assessed and 0 credits that are externally assessed

Course endorsement is not possible in L1SCI

This course does not lead to a university approved course.

## L1 SCIENCE TRANSITION (L1SCT)

*This course leads to L2BIO, L2CHM, L2ESS, L2PHY*

This is a course designed for English language learners who would like to study Level 2 and 3 Science subjects in following years but do not yet have the English ability to be successful in them. It comprises of foundation knowledge in Biology, Chemistry, Physics and Earth and Space Science. Students will learn science whilst developing their English ability.

Teacher in charge - Mrs Samantha Lewis

This course leads to a university approved course.

## L1 BIOLOGY (L1BIO)

*This course follows on from 10SCI and leads to L2BIO*

Biology is a core science subject where students will develop an understanding of fundamental biological concepts including microbiology, ecology, genetics and evolutionary principles. Students will learn to apply knowledge of biology to explain aspects of the natural world.

Teacher in charge - Mrs Samantha Lewis

**Students in this course will be working towards**

10 credits that are internally assessed and 5 credits that are externally assessed

Course endorsement is possible in L1BIO

This course leads to a university approved course.

## L1 CHEMISTRY (L1CHM)

*This course follows on from 10SCI and leads to L2CHM*

Chemistry is a core science subject where ākonga/students will develop an understanding of fundamental chemical concepts including organic chemistry, chemical reactivity, and properties of substances. Ākonga/students will learn to apply knowledge of chemistry to explain aspects of our taiao/environment and the implications on our porihanga/society.

Teacher in charge - Mr Brad Simons

**Students in this course will be working towards**

11 credits that are internally assessed and 4 credits that are externally assessed.

Course endorsement is possible in L1CHM

This course leads to a university approved course.

## L1 EARTH AND SPACE SCIENCE (L1ESS)

*This course follows on from 10SCI and leads to L2ESS*

Earth and Space Science is a core science subject where students will develop an understanding of fundamental astronomical and geological concepts. The course includes concepts on planetary system formation, astronomical cycles and the effects of these on planet earth. We will investigate how the earth's different spheres interact and how the dynamics of these are altered by an environmental issue. Students will learn to apply knowledge of earth and space ideas to help explain aspects of the natural world.

Teacher in charge - Mrs Rebecca Pringle

**Students in this course will be working towards**

10 credits that are internally assessed and 5 credits that are externally assessed

Course endorsement is possible in L1ESS

This course leads to a university approved course.

## L1 PHYSICS (L1PHY)

*This course follows on from 10SCI and leads to L2PHY*

Physics is a core science subject where students will develop an understanding of fundamental physical concepts including mechanics, electricity and magnetism and heat. Students will learn to apply knowledge of Physics to explain aspects of the natural world and develop key competencies, such as investigative skills, different inquiry approaches and drawing on different knowledge systems.

Teacher in charge – Mr Anthony Tuxford

**Students in this course will be working towards**

10 credits that are internally assessed and 5 credits that are externally assessed

Course endorsement is possible in L1PHY

This course leads to a university approved course.

## L2 EARTH AND SPACE SCIENCE (L2ESS)

*This course follows on from L1ESS and leads to L3ESS*

Students will develop an understanding of fundamental astronomical and geological concepts including star characteristics and life cycle, planetary and solar system formation, volcanoes, earthquakes and local surface feature formation as well as investigating a global environmental issue. Students will learn to apply knowledge of Earth and Space to explain aspects of the material world. This course is designed to prepare students for tertiary study in one of the Sciences.

Teacher in charge - Mrs Rebecca Pringle

**Students in this course will be working towards**

12 credits that are internally assessed and 8 credits that are externally assessed

Course endorsement is possible in L2ESS

0 Credits towards UE literacy (R/W/B)

This course leads to a university approved course.

## L2 BIOLOGY (L2BIO)

*This course follows on from L1BIO and leads to L3BIO*

This course builds on Level 1 Biology knowledge. Students will develop an understanding of fundamental biological concepts including Zoology, Cytology, Ecology, Genetics and Evolutionary Principles. Students will learn to apply knowledge of biology to explain aspects of the natural world. This course is designed to prepare students for tertiary study in the Biological Sciences.

Teacher in charge - Mrs Samantha Lewis

**Students in this course will be working towards**

10 credits that are internally assessed and 8 credits that are externally assessed

Course endorsement is possible in L2BIO

4W Credits toward UE literacy (R/W/B)

This course leads to a university approved course.

## L2 CHEMISTRY (L2CHM)

*This course follows on from L1CHM and leads to L3CHM*

This course builds on Level 1 Chemistry knowledge. Students will develop an understanding of fundamental chemical concepts including atomic structure and bonding, organic chemistry, and chemical reactivity. Students will learn to apply knowledge of chemistry to explain aspects of the material world. This course is designed to prepare students for tertiary study in one of the Sciences.

Teacher in charge - Mr Brad Simons

**Students in this course will be working towards**

10 credits that are internally assessed and 8 credits that are externally assessed

Course endorsement is possible in L2CHM

0 Credits towards UE literacy (R/W/B)

This course leads to a university approved course.

## L2 PHYSICS (L2PHY)

*This course follows on from L1PHY and leads to L3PHY*

This course builds on Level 1 Physics knowledge. Students will develop an understanding of fundamental physical concepts including mechanics, electricity, and modern physics. Students will learn to apply knowledge of physics to explain aspects of the material world. This course is designed to prepare students for tertiary study in one of the Sciences.

Teacher in charge – Mr Anthony Tuxford

**Students in this course will be working towards**

10 credits that are internally assessed and 12 credits that are externally assessed

Course endorsement is possible in L2PHY

0 Credits towards UE literacy (R/W/B)

This course leads to a university approved course.

### L3 BIOLOGY (L3BIO)

*This course follows on from L2BIO*

This subject builds on Level 2 Biology knowledge. Students will develop an understanding of fundamental biological concepts including Homeostasis, Socio-scientific issues, Human Evolution, Plant and Animal Behaviour and Applications of Biotechnology. This course is designed to prepare students for tertiary study in the Biological Sciences.

Teacher in charge - Mrs Samantha Lewis

**Students in this course will be working towards**

9 credits that are internally assessed and 9 credits that are externally assessed

Course endorsement is possible in L3BIO

9R, 9B credits to UE literacy (R/W/B)

This course is a university approved course.

### L3 CHEMISTRY (L3CHM)

*This course follows on from L2CHM*

This course builds on Level 2 Chemistry knowledge. Students will develop an understanding of fundamental chemical concepts including thermochemistry, organic chemistry, implications of chemistry in the real world. Students will learn to apply knowledge of chemistry to explain aspects of the material world. This course is designed to prepare students for tertiary study in one of the Sciences.

Teacher in charge - Mr Brad Simons

**Students in this course will be working towards**

9 credits that are internally assessed and 10 credits that are externally assessed

Course endorsement is possible in L3 CHM

4W credits to UE literacy (R/W/B)

This course is a university approved course.

### L3 EARTH AND SPACE SCIENCE (L3ESS)

*This course follows on from L2ESS*

This course builds on L2ESS knowledge covering both practical and theoretical concepts of Earth and Space systems. It is an academic course which includes topics in ocean, atmosphere and astronomy. This is suited to students wishing to study courses such as Environmental Science, Marine Biology, Climate Science and Geography.

Teacher in charge - Mrs Rebecca Pringle

**Students in this course will be working towards**

12 credits that are internally assessed and 8 credits that are externally assessed

Course endorsement is possible in L3 ESS

8W, 20R, 8B credits to UE literacy (R/W/B)

This course is a university approved course.



## L3 PHYSICS (L3PHY)

*This course follows on from L2PHY*

This course builds on Level 2 Physics knowledge. Students will develop an understanding of fundamental physical concepts including mechanics, electricity, waves and modern physics. Students will learn to apply knowledge of physics to explain aspects of the material world. This course is designed to prepare students for tertiary study in one of the Sciences.

Teacher in charge – Mr Anthony Tuxford

**Students in this course will be working towards**

10 credits that are internally assessed and 16 credits that are externally assessed

Course endorsement is possible in L3PHY

3R credits toward UE literacy (R/W/B)

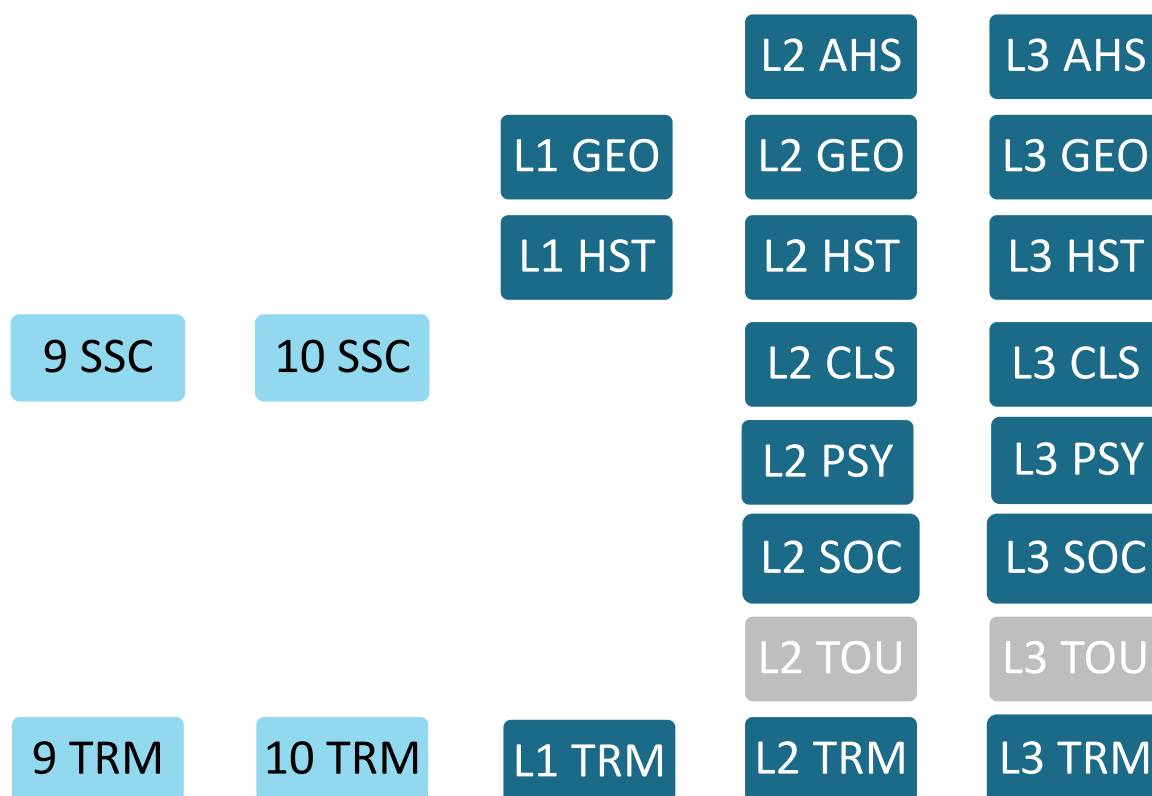
This course is a university approved course.

## SOCIAL SCIENCES

Head of Faculty – Mrs Tamara Mason

Ext 863

[tmason@lbc.school.nz](mailto:tmason@lbc.school.nz)



### Y9 SOCIAL SCIENCE (9SSC)

*This course leads to 10SSC*

The Year 9 Social Science course draws from the Social Sciences and the Humanities. The course is thematically based, exploring a range of contexts across time, locations and societies. Themes explored include our place in society, making choices, and protecting resources. The course is designed to stimulate curiosity and imagination, in alignment with NZC Levels 4-5 of the Social Sciences strands. The course has a focus on building literacy, understanding of perspectives and research skills.

Teacher in charge – Mrs Tamara Mason

### Y9 TE REO MĀORI (9TRM)

*This course leads to 10TRM*

This is a single semester introductory course in te reo Māori (language) and tikanga (customs). Ākonga will cover foundational cultural concepts while engaging with relevant language basics. Matariki, hauora (health), pūkenga kōrero (conversational skills), and toi Māori (Māori art) are some of the kaupapa covered in this course. Involvement in Kapa Haka is encouraged.

Teacher in charge – Whaea Olivia Schertenleib

*This course leads to L1HST, L1GEO*

## Y10 SOCIAL SCIENCE (10SSC)

The Year 10 Social Science course draws from the Social Sciences and the Humanities. The course is thematically based, exploring a range of contexts across time, locations and societies. Themes explored include global connections, bicultural Aotearoa/New Zealand and human rights and how people have sought them. The course is designed to stimulate curiosity and imagination, in alignment with Level 5 of the Social Sciences strands. The course has a focus on building literacy, understanding of perspectives and research skills.

Teacher in charge – Mrs Tamara Mason

## Y10 TE REO MĀORI (10TRM)

*This course leads to L1TRM*

full year course (two semesters) that builds on the foundational cultural and language aspects introduced in Year 9, with the expectation of the learning being bilingual. Broader contexts are explored and ākonga are encouraged to participate fully in the practical components, such as kēmu (traditional games) and toi Māori (Māori art). Pūrākau (oral history), whakapapa (genealogy), tikanga Marae (Marae protocols), and kai Māori (Māori food) are some of the kaupapa for this course. Involvement in Kapa Haka is encouraged.

Teacher in charge – Whaea Olivia Schertenleib

## L1 GEOGRAPHY (L1GEO)

*This course follows on from 10SSC and leads to L2GEO*

Level 1 Geography provides learners with an introduction to this subject, showcasing the exciting world around them. We study the dynamic interactions between the natural and cultural environment. Learners will be introduced to geographic concepts, research skills and hands-on, real-world focused case studies.

Topics studied include impacts of tourism in the Maldives, researching and exploring how people engage in local spaces, climate change causes and impacts, introduction to modern day piracy, population studies, mountain environments and a study of Uluru.

Teacher in charge - Mrs Justine McIntosh

**Students in this course will be working towards**

10 credits that are internally assessed and 5 credits that are externally assessed

Course endorsement is possible in L1GEO

This course leads to a university approved course.

## L1 HISTORY (L1HST)

*This course follows on from 10SSC and leads to L2HST*

Level 1 History provides learners with an introduction to this subject, taking learners on a deep dive into exciting and significant historical events and periods that have shaped New Zealand and the world. This course teaches critical research skills, historical significance narratives and causation. Topics covered in this course will include global conflicts and New Zealand's role within them, as well as unpacking civil rights, activism, and colonisation from a range of international and local historical contexts.

Teacher in charge – Mr Terry Chee

### **Students in this course will be working towards**

10 credits that are internally assessed and 5 credits are externally assessed

Course endorsement is possible in L1 HST

This course leads to a university approved course.

## L2 ART HISTORY (L2AHS)

*This course leads to L3AHS*

Art History is a subject which allows you to understand the essence of society's ideas and priorities through unravelling how this is mirrored in the lives and artworks of artists.

The topic of study for this course is "Towards Modernism" which covers 19<sup>th</sup> Century Art in France. This was a time of dramatic social and political change in world history brought on by the Age of Enlightenment, French Revolutions and the Industrial Age. Art movements from Neo-Classicism to Post Impressionism are studied to unravel artists' ideas and Interpretation of reality in this modern and uncertain age.

Study in Art History is complementary to other subjects such as History and Classics and does not need to be taken in conjunction with Practical Art. It is however a valuable subject for Visual Art students and is especially beneficial to those students interested in studying Art, Design or Architecture at a Tertiary level.

Students choosing this course must show an ability to respond to teacher led research and written tasks in the classroom and the ability to work independently. This course requires strong analytical and literacy skills.

Teacher in charge - Mrs Liese Strong

### **Students in this course will be working towards**

12 credits that are internally assessed and 12 credits that are externally assessed

Course endorsement is possible in L2AHS

12R, 12B credits to UE literacy (R/W/B)

This course leads to a university approved course.

## L2 CLASSICS (L2CLS)

*This course follows on from L1ENG, L1ENE, L1HST and leads to L3CLS*

Classics is about the great civilisations of Ancient Greece and Ancient Rome. The Level 2 course focuses on the history, society, mythology, literature, architecture, and art of Ancient Greece. Assessments cover the Battle of Thermopylae, Homer's great tale The Odyssey, as well as the sculpture and architecture of Ancient Athens.

Teacher in charge - Mr Dean Thompson

### **Students in this course will be working towards**

10 credits that are internally assessed and 8 credits that are externally assessed

Course endorsement is possible in L2CLS

10R, 8B credits to UE literacy (R/W/B)

This course leads to a university approved course.

## L2 GEOGRAPHY (L2GEO)

*This course follows on from L1GEO and leads to L3GEO*

Geography Level 2 focuses on 2 major areas of study: • Differences in development and Geographic skills • Also studied are the development of important geographic concepts and the understanding of contemporary geographic issues and problems. The 3 day field trip to the Tongariro Volcanic Centre is an integral part of the course and students must be willing and able to go on this field trip.

Teacher in charge - Mrs Justine McIntosh

### **Students in this course will be working towards**

11 credits that are internally assessed and 8 credits that are externally assessed

Course endorsement is possible in L2GEO

4R, credits towards UE (R/W/B)

This course leads to a university approved course.

## L2 HISTORY (L2HST)

*This course follows on from L1HST and leads to L3HST*

In this course students will study two main topics that explore revolutionary change on a global scale. Big Ideas such as nationalism, communism, political power and warfare will be explored to investigate the impact these ideas had on people and why they are significant not only to Aotearoa New Zealand, but in the international community as well. These topics are: conflict in Vietnam 1945-1975 and The Russian Revolution. Success in this subject requires strong literacy skills to cope with the reading, writing and research components.

Teacher in charge - Mr Terry Chee

### **Students in this course will be working towards**

14 credits that are internally assessed and 5 credits that are externally assessed

Course endorsement is possible in L2HST

14R, 5B credits to UE literacy (R/W/B)

This course leads to a university approved course.

## L2 PSYCHOLOGY (L2PSY)

*This course leads to L3 PSY*

In this course students will develop an understanding of the Science and study of Psychology. This includes methods of psychological research, how psychological theory is applied in Clinical practice to explain behaviours such as Addiction and Schizophrenia. The ethical principles underpinning psychological research with a focus on controversial studies into social Influence and obedience. Students will conduct research to investigate the purpose of sleep and dreaming.

Teacher in charge – Mr Eric Wheeler

**Students in this course will be working towards**

All credits are internally assessed.

Course endorsement is not possible in L2PSY.

21R, credits towards UE Literacy (R/W/B)

This course leads to a university approved course.

## L2 SOCIOLOGY (L2SOC)

*This course leads to L3SOC*

Level 2 Sociology allows students to explore recent and present global conflicts and social issues through a lens of perspectives, human rights, and equity. This course allows for students to learn more about the issues that they are passionate about, as well as developing their understanding of why people and groups respond in the ways that they do. Topics studied will include the social issues locally, nationally and globally and current global and cultural conflicts, with consideration of how they can be addressed. This course supports students to be able to critically appraise sources for their reliability and bias, as well as supporting the development of literacy. Students will select a social issue and plan and participate in a social action designed to educate their peers and to support the rights of others as part of this course.

Teacher in charge – Miss Lauren Wing

**Students in this course will be working towards**

14 credits that are internally assessed and 4 credits that are externally assessed.

Course endorsement is possible in L2SOC

9R credits towards UE literacy (R/W/B)

This course leads to a university approved course

## L2 TOURISM (L2TOU)

*This course follows on from L1HST, L1GEO and leads to L3TOU*

Tourism is a constantly growing industry in New Zealand and therefore it is useful to achieve some of the Tourism Unit Standards before going on to study the subject at a tertiary institution.

Teacher in charge - Mr Martyn Longstaff

**Students in this course will be working towards**

20 credits that are internally assessed and 0 credits that are externally assessed

Course endorsement is not possible in L2TOU

This course does not lead to a university approved course

### L3 ART HISTORY (L3AHS)

*This course follows on from L2AHS*

Art History is a subject which allows you to understand the essence of society's ideas and priorities through unravelling how this is mirrored in the lives and artworks of artists. The topic of study is "Early Modernism" which takes place in the first half of the 20th Century, a period which covers both world wars and ground-breaking advances in science, technology and psychology. This was also a period of accelerated social, political, and philosophical change. Art movements from Cubism to Surrealism are studied to unravel artists' reinvention and interpretation of reality in this modern and uncertain age. Study in Art History is complementary to other subjects such as History and Classics and does not need to be taken in conjunction with Practical Art. It is however a valuable subject for Visual Art students and is especially beneficial to those students interested in studying Art, Design or Architecture at a Tertiary level. Students choosing this course must show an ability to respond to teacher led research and written tasks in the classroom and the ability to work independently.

Teacher in charge - Mrs Liese Strong

**Students in this course will be working towards**

12 credits that are internally assessed and 12 credits that are externally assessed.

Course endorsement is possible in L3AHS

12R, 12B credits to UE literacy (R/W/B)

This course is university approved.

### L3 CLASSICS (L3CLS)

*This course follows on from L2CLS*

Classics is about the great civilisations of Ancient Greece and Ancient Rome. The Level 3 course focuses mostly on the history, society, mythology, entertainment, literature, politics, architecture and art of Ancient Rome.

Assessments cover propaganda in Roman art and architecture, the nature of heroism throughout time, and Virgil's The Aeneid.

Teacher in charge - Mr Dean Thompson

**Students in this course will be working towards**

8 credits that are internally assessed and 12 credits that are externally assessed

Course endorsement is possible in L3CLS

12R, 8B credits to UE literacy (R/W/B)

This course is university approved.

### L3 GEOGRAPHY (L3GEO)

*This course follows on from L2GEO*

The course covers 2 major areas: • The study of natural coastal processes at work within Omaha. Selecting and applying skills and important geographic ideas to topics. • Sustainability of Tourism is studied with a 3 day field trip to Rotorua • Studies of contemporary geographic issues on Human Trafficking and Modern Day Piracy. Field work is an integral part of the course and assessment. Students must be able to go on these field trips.

Teacher in charge - Mrs Justine McIntosh

**Students in this course will be working towards**

11 credits that are internally assessed and 8 credits that are externally assessed

Course endorsement is possible in L3GEO

3R, 8B credits to UE literacy (R/W/B)

This course is university approved.

### L3 HISTORY (L3HST)

*This course follows on from L2HST*

Students study two topics in depth. The first topic is The Weimar and Nazi Germany, 1918-45. In the second topic, students conduct research on a topic of their choice as part of the internal assessment. This provides the opportunity to focus on an area of history that is of particular interest to the student as well as developing their skills as Historians.

Teacher in charge - Mr Terry Chee

**Students in this course will be working towards**

15 credits that are internally assessed and 6 credits that are externally assessed

Course endorsement is possible in L3 HST

15R and 6B credits to UE literacy (R/W/B)

This course is university approved.

### L3 TOURISM (L3TOU)

*This course follows on from L2TOU*

This course is the second half of the National Certificate in Tourism Level 2. Tourism electives can be done on their own without the full certificate being taken, as can Tourism Core Skills.

Teacher in charge – Mr Martyn Longstaff

**Students in this course will be working towards**

21 credits that are internally assessed and 0 credits that are externally assessed

Course endorsement is not possible in L3 TOU

This course is not university approved.



### L3 PSYCHOLOGY (L3PSY)

*This course follows on from L2PSY*

In this course students will develop an understanding of the Science and study of Psychology. This includes conducting student led psychological research, how psychological theory interacts to explain how aggression is applied within Forensic psychology. Understanding how psychology looks to explain human attraction with application to a Field of practice within Advertising and Marketing. Students will investigate the nature of what is intelligence and what it will be. The Issues impacting psychological practice including Cultural and Gender Bias as well as the Ethical issues of using animals or children in psychological research.

Teacher in charge – Mr Eric Wheater

#### **Students in this course will be working towards**

19 credits are internally assessed

3 credits are externally assessed

Course endorsement is possible in L3PSY

19R and 3B credits to UE literacy (R/W/B)

This course leads to a university entrance approved course.

### L3 SOCIOLOGY (L3SOC)

*This course follows on from L2SOC*

Level 3 Sociology allows students to explore the role that ideologies play in politics, conflict and law change. This course allows students to deepen their understanding of the major issues and debates affecting our world today, with a focus on understanding how ideologies have shaped views and actions of each side. Topics studied will include the current conflict between Russia and Ukraine, crime and punishment, including inquiring into a criminal case of their choice, and law and policy change in New Zealand.

Students will select a social issue and plan and participate in a social action designed to educate their peers and to support the rights of others as part of this course.

Teacher in charge – Miss Lauren Wing

#### **Students in this course will be working towards**

16 credits that are internally assessed and 4 credits that are externally assessed.

Course endorsement is possible in L3SOC

16R and 4B credits towards UE literacy (R/W/B)

This is a university approved course.

**Please note there is an exclusion between L2 and L3SOC and L3EAE**

## L1 TE REO MĀORI (L1TRM)

*This course follows on from 10TRM and leads to L2TRM*

*This course follows on from 10TRM and leads to L2TRM*

This course extends on previous learning in the Year 10 te reo Māori course. Ākonga will continue the study of tikanga Māori and will undertake internal assessments in kōrero (speaking), and an external assessment in tuhi (writing). Research, communication-based activities and games, will be used to build competency in conversational skills, along with reading, writing, speaking and listening activities. Participation in Kapa Haka is encouraged. Te Ao Haka NCEA Level 1 Performance standard is potentially available for students engaged in Kapa Haka.

Teacher in charge – Whaea Olivia Schertenleib

### **Students in this course will be working towards**

10 credits that are internally assessed, and 5 credits that are externally assessed

Course endorsement is possible in L1TRM

This course leads to a university approved course.

## L2 TE REO MĀORI (L2TRM)

*This course follows on from L1TRM and leads to L3TRM*

Students who are new to this subject will be given a workbook to complete in preparation for this course

This course will be delivered 80% in Māori and 20% in English. Students will cover a variety of themes about the history of the area, Māori cosmology, Astrology, future endeavours and interests.

Students will develop vocabulary, grammar and phrases to level 5, 6 and 7 of the curriculum. In an immersion environment, there will be increased opportunities to speak Te Reo Māori in conversation and classroom activities. Completion of this course is essential for ākonga wishing to study te reo Māori at Level 3. Involvement in Kapa Haka is encouraged.

Teacher in charge – Whaea Briar Cornwall

### **Students in this course will be working towards**

12 credits are internally assessed and 6 credits are externally assessed.

Course endorsement is possible in L2TRM

6R, 6W credits to UE literacy (R/W/B)

This course leads to a university entrance approved course.

### L3 TE REO MĀORI (L3TRM)

*This course follows on from L2TRM*

Students who are new to this subject will be given a workbook to complete in preparation for this course.

This course will be delivered 80% in Māori and 20% in English. Students will cover a variety of themes about the history of different areas, political and current events, Māori legends and cosmology, giving an opinion, future endeavours and skills.

Students will develop vocabulary, grammar and phrases to level 6,7 and 8 of the curriculum. In an immersion environment, there will be increased opportunities to speak Te Reo Māori in conversation and classroom activities. Involvement in Kapa Haka is encouraged.

Teacher in charge – Whaea Briar Cornwall

**Students in this course will be working towards**

12 credits that are internally assessed and 6 credits that are externally assessed

Course endorsement is possible in L3TRM

6R, 6W credits to UE literacy (R/W/B)

This course leads to a University approved course.

## TECHNOLOGY

Acting Head of Faculty – Ms Chloe Cope

ccope@lbc.school.nz

9 DVC	10 DVC	L1 DVC <sup>λ</sup>	L2 DVC <sup>λ</sup>	L3 DVC <sup>λ</sup>
9 DTS	10 DTS	L1 DTS	L2 DTS	L3 DTS
9 TFD	10 TFD	L1 TFD <sup>λ</sup>	L2 TFD	L3 TCH
9 TDT	10 TDT	L1 TDT <sup>λ</sup>	L2 TDT <sup>λ</sup>	L3 TDT <sup>λ</sup>
		L1 TEN	L2 TEN	L3 TEN
		L1 TWT	L2 TWT	L3 TWT

<sup>λ</sup> Portfolio subjects are indicated with this symbol <sup>λ</sup>. If choosing portfolio subjects, students are recommended to choose a maximum of two.

### Y9 DESIGN AND VISUAL COMMUNICATION (9DVC)

*This course leads to 10DVC*

A one semester course that begins with the application of basic theory and practical skills needed in both Architecture and Product design.

Development towards the key areas includes: • Understanding of design ideation and refinement • Understanding of design context and real-world problem solving • Design sketching, crating, rendering • Architecture case studies • Engineering and technical drawing content • Communication design

High end Technology skills: • Adobe Software • CAD Software • Laser cutter • Model making/prototyping

Teacher in charge - Mrs Chloe Cope

## Y9 DIGITAL TECHNOLOGY STUDIES (9DTS)

*This course leads to 10DTS*

This one semester course focuses on web-development, Computer Science theory and an introduction to Python programming

Web development includes:

- Human Computer interaction(HCI) using Nielson's Heuristics
- Design principles and Elements
- File management procedures
- Web design using HTML and CSS(Replit)
- Python programming (sequence, selection and iteration)
- Data representation (understanding Binary)
- Error control Encoding(Parity & check digits)

Teachers in charge: Mr Fazul Khan & Mr Tony Bailey

## Y9 FOOD TECHNOLOGY (9TFD)

*This course leads to 10TFD*

Food plays an important role in bringing people together and fostering a sense of belonging, across the diverse cultures of Aotearoa New Zealand. Through engaging with food technology, students will develop knowledge and skills about food commodities, healthy eating, basic techniques and processes. This one semester course will develop independence and confidence in food preparation and presentation, as well as safe and hygienic food practices. During the second half of the semester, the emphasis is on product design and development.

Teacher in charge - Mrs Debra Scragg

## Y9 DESIGN & TECHNOLOGY (9TDT)

*This course leads to 10TDT*

This course provides a practical introduction into Hard Materials and Electronics through specifically designed 'design and make' project tasks. Skills taught include the design process, the use of Adobe design, Software and Laser etching and Cutting.

Teacher in charge – Mr Matt Overington

## Y10 DESIGN AND VISUAL COMMUNICATION (10DVC)

*This course leads to L1DVC*

A one semester course that extends both practical and theory skills in Architecture and Product design. Those students not involved in year 9 DVC gain knowledge, whilst acting as a developmental refresher for those who completed Year 9 DVC.

Further development towards the key areas includes:

- Understanding of design ideation and refinement
- Understanding of design context and real-world problem solving
- Design sketching, crating, rendering
- Architecture case studies
- Engineering and technical drawing content
- Communication design. High end Technology skills;
- Adobe Software
- Autodesk Software
- 3D Printer
- Laser cutter
- Model making/prototyping

Teacher in charge – Ms Chloe Cope

## Y10 DIGITAL TECHNOLOGY STUDIES (10DTS)

*This course leads to L1DTS, L1TDT*

This one semester course focuses on 3D modelling, Game Animation, Web design(HTML & CSS) and Advanced Python Programming.

3D modelling, Web design, Game Animation and advanced Programming will include:

- Pseudocode
- 3D modelling using Blender
- Project Management using Gantt charts to plan and develop a website
- Web design using HTML and CSS(Replit)
- Python programming (input, output, sequence, selection, iteration to design, creating and debugging a computer program)

Teachers in charge: Mr Fazul Khan & Mr Tony Bailey

## Y10 FOOD TECHNOLOGY (10TFD)

*This course leads to L1TFD*

Food plays an important role in bringing people together and fostering a sense of belonging, across the diverse cultures of Aotearoa New Zealand. Through engaging with food technology, students will develop knowledge and skills about food commodities, healthy eating, basic techniques and processes. This one semester course will develop independence and confidence in food preparation and presentation, as well as safe and hygienic food practices. During the second half of the semester, the emphasis is on product design and development.

Teacher in charge - Mrs Debra Scragg

## Y10 DESIGN & TECHNOLOGY (10TDT)

*This course leads to L1TDT, L1TWT, L1TEN*

This course consists of a combination of Hard Materials and Electronic based projects. Students will learn about the theory of materials and basic electronics along with designing and making products that incorporate all of these areas.

Skills taught in year 9 (Adobe Design Software Design Process, Laser Cutting) will be reinforce in this course.

Teacher in charge – Mr Paul Kemsley-Smith

## L1 DESIGN AND VISUAL COMMUNICATION (L1DVC) λ

*This course follows on from 10DVC and leads to L2DVC*

There are two areas of study: • Spatial Design - architecture, landscape graphics, perspective drawing • Product Design - engineered products, consumer products, media products and associated drawing systems. A selected body of work will be promoted to an audience.

Teacher in charge - Mrs Chloe Cope

**Students in this course will be working towards**

5 credits that are internally assessed and 10 credits that are externally assessed.

Course endorsement is possible in L1 DVC

This course leads to a university approved course.

## L1 DIGITAL TECHNOLOGY STUDIES (L1DTS)

*This course follows on from 10DTS and leads to L2DTS*

**REQUIREMENTS:** Home internet, computer and 16Gb Flash drive

Students will learn how to:

- Develop a website using HTML and CSS
- Take end users into account and use the process of iteration throughout their design, development and testing phase
- Effectively use design elements
- Address relevant implications in their outcomes e.g. understanding the correct ethical procedures when producing, using and storing data
- Create a flexible and robust program using Python/Java as the programming language whilst following conventions of these programming languages
- Test and debug in an organised way with expected, boundary and unexpected data
- Demonstrate understanding of Human Computer interaction(HCI) using Nielson's Heuristics (3 hour external examination)

Teacher in charge: Mr Fazul Khan

**Students in this course will be working towards**

10 credits that are internally assessed and 5 credits that are externally assessed

Course endorsement is possible in L1DTS

This course leads to a university approved course.

## L1 DESIGN AND TECHNOLOGY (L1TDT) λ

*This course follows on from 10TDT and leads to L2TDT*

This course forms the foundation of a pathway to university. Delivering two internal and one external assessment the course is structured to encourage critical thinking and problem solving resulting in the design and production of hard materials-based solutions. Students will research, design then construct new products from wood, metals, plastics, fabrics, electronics, in single materials or combinations of these. They will also have the opportunity to use a variety of Computer Aided Design and manufacturing systems.

Teacher in charge: Mr Paul Kemsley-Smith

**Students in this course will be working towards**

10 internally assessed credits and 5 externally assessed

Course endorsement is possible in L1TDT

This course leads to a university approved course.

## L1 ENGINEERING (L1TEN)

*This course follows on from 10TDT and leads to L2TEN*

This course consists of a combination of written and practical work. Students will be assessed on their competence in using tools and machinery in the Engineering workshop, as well as their understanding of materials and safe working practices. It is designed for students interested in pursuing an apprenticeship in related fields.

Teacher in charge - Mr Matt Overington

**Students in this course will be working towards**

24 credits that are internally assessed and 0 credits that are externally assessed

Course endorsement is not possible in L1TEN

This course does not lead to a university approved course.

## L1 WOOD TECHNOLOGY (L1TWT)

*This course follows on from 10TDT and leads to L2TWT*

This is a NCEA Unit Standard Technology course using wood-based products as a materials medium. Students will gain credits for success with design, brief development, individual production of a prototype, and documentation of processes. This course is designed as a skills and knowledge prerequisite for Level 2 Wood Technology. An article of furniture will be made to take home.

Teacher in charge - Mr Jeff Evans

**Students in this course will be working towards**

18 credits that are internally assessed and 0 credits that are externally assessed

Course endorsement is not possible in L1TWT

This course does not lead to a university approved course.

## L1 FOOD TECHNOLOGY (L1TFD) λ

*This course follows on from 10TFD and leads to L2TFD*

Food plays an important role in bringing people together and fostering a sense of belonging, across the diverse cultures of Aotearoa New Zealand. Through engaging with food technology, students will combine practical skills with theoretical knowledge and develop their lateral thinking skills to innovatively solve problems. They will develop knowledge about materials, techniques and processes which are intrinsic to their application and use. In addition, they will learn to plan projects to develop specifications through design concepts and the use of briefs. Students will, throughout their learning, gain experiences, knowledge and attributes, and life skills that can lead to and support a wide range of pathways. This includes roles in the field of food technology, education, nutrition, food science, media and publishing and events management.

Students in this course will be working towards 12 credits that are internally assessed and 4 credits that are externally assessed.

Course endorsement is possible.

This course leads to a university approved course.

Teacher in charge Mrs Debra Scragg



## L2 DESIGN AND VISUAL COMMUNICATION (L2DVC) λ

*This course follows on from L1DVC and leads to L3DVC*

Two, half year projects from a student driven perspective. Brief, context and specifications are researched extensively by students before design ideation and refinement begins. Approximately 1/3 of course content is skill development where exercises and “real life learning” takes place. During the year, students will delve into important design principles through 2 projects. Although both will be product or spatial related, the design context aims to solve 2 very different world problems (new learning will take place within each assessment).

Teacher in charge - Mrs Chloe Cope

### **Students in this course will be working towards**

19 credits that are internally assessed and 7 credits that are externally assessed

Course endorsement is possible in L2DVC

0 Credits towards UE literacy (R/W/B)

This course leads to a university approved course.

## L2 DIGITAL TECHNOLOGY STUDIES (L2DTS)

*This course follows on from L1DTS and leads to L3DTS*

This course offers more advanced tuition in Web design, programming and database design

**REQUIREMENTS:** Home internet, computer and 16Gb Flash drive

Students will learn how to:

- Develop a conceptual design for an outcome using relevant conventions(*including web, coding, design elements and principles and Nielsen’s Heuristics*)
- Use advanced processes (including project management tools and techniques) to develop a digital media outcome(web-HTML & CSS)
- Use feedback from end users/stakeholders and information testing from testing procedures to improve their outcome.
- Address relevant implications.
- Use the process of iteration.
- Plan and create a computer program using Python/Java, adhering to the advanced concepts in Computer Science(optional)
- Plan and create a relational database(optional)
- Students will look at advanced concepts in Computer Science. Topics include computer security, encryption, error control, complexity and traceability and AI(3 hour external exam)

Teachers in charge: Mr Fazul Khan

### **Students in this course will be working towards**

16 credits that are internally assessed and 3 credits that are externally assessed

0 Credits towards UE literacy (R/W/B)

Course endorsement is possible in L2DTS

This course leads to a university approved course.

## L2 DESIGN AND TECHNOLOGY (L2TDT) λ

*This course follows on from L1TDT and leads to L3TDT*

Building on the foundation of the level one course and presenting a pathway to university the course increases the challenge of problem solving and design. Delivering three internal and one external assessment the course is structured to encourage critical thinking and problem solving resulting in the design and production of hard materials-based solutions. Students will identify their own design challenge. Research, design then construct new products from wood, metals, plastics, fabrics, electronics, in single materials or combinations of these. They will also have the opportunity to use a variety of Computer Aided Design and manufacturing systems.

Teacher in charge: Mr Paul Kemsley-Smith

### **Students in this course will be working towards**

Students on this course will be working towards 16 internally assessed credits and 4 externally assessed.

0 Credits towards UE literacy (R/W/B)

Course endorsement is possible in L2TDT

This course leads to a university approved course.

## L2 ENGINEERING (L2TEN)

*This course follows on from L2TEN and leads to L3TEN*

This course is tailored for students planning to pursue an apprenticeship in related fields. Participants will work towards following build instructions to complete individual projects. The course emphasizes the development and demonstration of skills and knowledge through practical tasks, written assignments, and graphic presentations.

Teacher in charge - Mr Matt Overington

### **Students in this course will be working towards**

18 credits that are internally assessed and 0 credits that are externally assessed

Course endorsement is not possible in L2TEN

This course does not lead to a university approved course.

## L2 WOOD TECHNOLOGY (L2TWT)

*This course follows on from L1TWT and leads to L3TWT*

This is a full NCEA Unit Standard Technology course using wood-based products as a materials medium. Students will gain credits for success with design, brief development, individual production of a prototype and documentation of processes. An article of furniture will be made to take home.

Teacher in charge - Mr Jeff Evans

### **Students in this course will be working towards**

18 credits that are internally assessed and 0 credits that are externally assessed

Course endorsement is not possible in L2TWT

This course does not lead to a university approved course.

## L2 FOOD TECHNOLOGY (L2TFD)

*This course follows on from L1 TFD and leads to L3TFD (in 2026)*

Food plays an important role in bringing people together and fostering a sense of belonging, across the diverse cultures of Aotearoa New Zealand. Through engaging with food technology, students will combine practical skills with theoretical knowledge and develop their lateral thinking skills to innovatively solve problems. They will develop knowledge about materials, techniques and processes which are intrinsic to their application and use. In addition, they will learn to plan projects to develop specifications through design concepts and the use of briefs. Students will, throughout their learning, gain experiences, knowledge and attributes, and life skills that can lead to and support a wide range of pathways. This includes roles in the field of food technology, education, nutrition, food science, media and publishing and events management.

Students in this course will be working towards 12 credits that are internally assessed and 4 credits that are externally assessed.

This course leads to L3 TFD

Course endorsement is possible.

This course leads to a university approved course.

Teacher in charge Mrs Debra Scragg

## L3 DESIGN AND TECHNOLOGY (L3TDT)

*This course follows on from L2TDT*

With the challenge of real world inspired problems students will extend their learning from the levels one and two courses. Delivering three internal and one external assessment the course is structured to encourage critical thinking and problem solving resulting in the design and production of hard materials-based solutions. However at level three students will be expected to find and work for a real client learning negotiation, planning and resource analyses to extend their capacity and confidence in design and problem solving.

Teacher in charge: Mr Paul Kemsley-Smith

**Students in this course will be working towards**

16 internally assessed credits and 4 externally assessed.

0 Credits towards UE literacy (R/W/B)

Course endorsement is possible in L2TDT

This course leads to a university approved course.

### L3 DESIGN AND VISUAL COMMUNICATION (L3DVC) λ

*This course follows on from L2DVC*

A single, full year project from a student driven perspective. Brief, context and specifications are researched extensively by students before design ideation and refinement begins. After refinement students have the option to delve in authentic technical drawing or promote their work in a formal exhibition space. Students will use a range of modes and media to communicate design ideas. This includes the laser cutter, 3D printer, sketching tablets, CAD, model making and more.

Teacher in charge - Mrs Chloe Cope

**Students in this course will be working towards**

10 credits that are internally assessed and 6 credits that are externally assessed

Course endorsement is possible in L3DVC

0 Credits towards UE literacy (R/W/B)

This course is university approved.

### L3 DIGITAL TECHNOLOGY STUDIES (L3DTS)

*This course follows on from L2DTS*

**REQUIREMENTS:** Home internet, computer and 16Gb Flash drive

Students will learn how to:

- Manage a project using project managing tools including agile methodologies such as “scrum” and “waterfall”
- Apply user experience(UX) methodologies to develop a design for a digital outcome, including competitive analysis, user personas, card sorts, wireframes and high fidelities
- Use complex processes to develop a digital outcome(web or App) synthesising information gained from planning, testing and trialling of components
- Students will study the area of Computer science. Topics include formal languages network communications protocols and big data.

Teachers in charge: Mr Fazul Khan

**Students in this course will be working towards**

16 credits that are internally assessed and 3 credits that are externally assessed

Course endorsement is possible in L3DTS

4B credits to UE literacy (R/W/B)

This course is university approved.

### L3 ENGINEERING (L3TEN)

*This course follows on from L2TEN*

This course is tailored for students planning to pursue an apprenticeship in fields related to manufacturing and fabrication. Participants will develop skills in producing components using precision machinery and engage in fabrication processes such as MIG welding. The course emphasizes a high level of proficiency and knowledge, which students will demonstrate through practical tasks, written assignments, and graphic presentations.

Teacher in charge - Mr Matt Overington

**Students in this course will be working towards**

18 credits that are internally assessed and 0 credits that are externally assessed

Course endorsement is not possible in L3TEN

This course is not university approved.

### L3 WOOD TECHNOLOGY (L3TWT)

*This course follows on from L2TWT*

This is a full NCEA Unit Standard Technology course using wood-based products as a materials medium. Students will gain credits for success with design, brief development, individual production of a prototype and documentation of processes. An article of furniture will be made to take home.

Teacher in charge - Mr Jeff Evans

**Students in this course will be working towards**

18 credits that are internally assessed and 0 credits that are externally assessed, with an optional further 16 internally assessed credits.

Course endorsement is not possible in L3TWT

This course is not university approved.

### L3 HOSPITALITY AND CATERING (L3TCH)

*This course follows on from L2TCH (2024)*

Food plays a key role in hospitality in bringing people together. Students will gain a wide range of skills and knowledge whilst working safely in the practical kitchen. The student learning material is supported by Service IQ. Students will, throughout their learning, gain experiences, knowledge and attributes, and life skills that can lead to and support a range of pathways in the hospitality and events management sector.

Teacher in charge Mrs Debra Scragg

**Students in this course will be working towards**

17 credits that are internally assessed.

Course endorsement is not possible in L3TCH

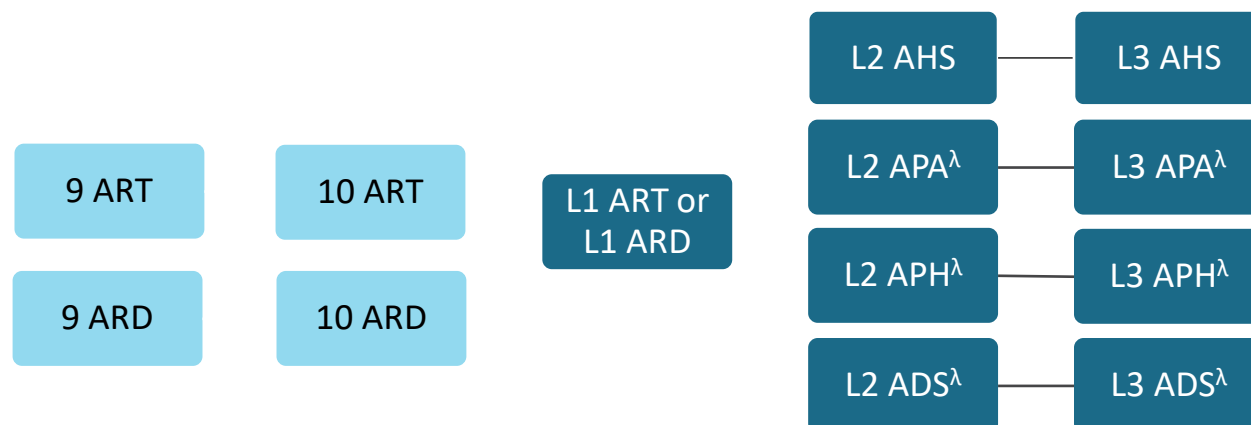
This course is not university approved.

## VISUAL ARTS

Head of Faculty – Mrs Liese Strong

Ext 893

[lstrong@lbc.school.nz](mailto:lstrong@lbc.school.nz)



<sup>^</sup> Portfolio subjects are indicated with this symbol <sup>^</sup>. If choosing portfolio subjects, students are recommended to choose a maximum of two.

### YEAR 12 & 13 PORTFOLIO VISUAL ART COURSES

With permission of the Head of Faculty, students may take up to two practical Visual Art subjects i.e. any combination of two of the following: ADS, APA, or APH. In addition to this, students could also benefit from taking AHS which will further enhance their understanding of art and artists.

#### Y9 ART (9ART)

*This course leads to 10ART, 10ARD*

This course is focused on developing a student's understanding of Art and ways to create it.

Students will develop technical skills in Drawing, Painting, Printmaking and Sculpture, whilst engaging in projects. Students will deepen their understanding of how to think creatively, analyse art-making methods and apply these to their own art-making practice.

Teacher in charge - Mrs Liese Strong

#### Y9 DIGITAL ART (9ARD)

*This course leads to 10ART, 10ARD*

This course is focused on developing a student's understanding of Digital Art and ways to create it.

Students will develop technical skills in Digital Photography, Digital Illustration and Stop-motion Animation, whilst engaging in thematic projects. Students will deepen their understanding of how to think creatively, analyse art-making methods and apply these to their own art-making practice.

Teacher in charge - Mrs Liese Strong

## Y10 ART (10ART)

*This course leads to L1ART, L1ARD*

This course is focused on further developing a student's understanding of Art and ways to create it.

Students will develop technical skills in Drawing, Painting, Design Illustration and Printmaking, whilst engaging in thematic projects. Students will deepen their understanding of how to portray both the physical and the imaginary, and will also develop the ability to think creatively, analyse art-making methods and apply these to their own art-making practice.

Teacher in charge - Mrs Liese Strong

## Y10 DIGITAL ART (10ARD)

*This course leads to L1ART, L1ARD*

This course is focused on further developing a student's understanding of Digital Art and ways to create it.

Students will develop technical skills in Digital Photography, Photographic manipulation, Digital Illustration, and Digital Animation using Adobe software; whilst engaging in thematic projects. Students will deepen their understanding of how to portray both the physical and the imaginary, and will also develop the ability to think creatively, analyse art-making methods and apply these to their own art-making practice.

Teacher in charge - Mrs Liese Strong

## L1 ART (L1ART) λ

*This course follows on from 10ART, 10ARD and leads to L2ADS, L2APA, L2APH, L2AHS*

This innovative programme builds on the skills learnt in 10ART and 10ARD and is designed to extend a student's understanding of art-making techniques and creative processes. Students will produce work using tactile art-making methods and there will also be opportunity for using digital methods.

Students will develop artistic responses to a broad theme and will learn to generate, develop and clarify their ideas using a variety of art-making methods. The focus of this year is on developing conceptual ideas and practical skills for future Art subject specialisation.

This course provides the essential foundations necessary for ongoing success in Senior Design, Painting and Photography.

Teacher in charge - Mrs Liese Strong

**Students in this course will be working towards**

5 credits that are internally assessed and 10 credits that are externally assessed

Course endorsement is possible in L1ART

**Please note: students may only choose L1ART or L1ARD** (it is not possible to do both, due to the same Achievement Standards being on offer)

This course leads to a university approved course.

## L1 DIGITAL ART (L1ARD) λ

*This course follows on from 10ART, 10ARD and leads to L2ADS, L2APA, L2APH, L2AHS*

This innovative programme builds on the skills learnt in 10ARD and 10ART and is designed to extend a student's understanding of art-making techniques and creative processes. Students will produce artwork using digital art-making methods and there will also be opportunity for using tactile methods.

Students will develop artistic responses and to a broad theme and will learn to generate, develop and clarify their ideas using a variety of art-making methods. The focus of this year is on developing conceptual ideas and practical skills for future Art subject specialisation.

This course provides the essential foundations necessary for ongoing success in Senior Design, Painting and Photography.

Teacher in charge - Mrs Liese Strong

**Students in this course will be working towards**

5 credits that are internally assessed and 10 credits that are externally assessed

Course endorsement is possible in L1ARD

**Please note: students may only choose L1ARD or L1ART** (it is not possible to do both, due to the same Achievement Standards being on offer)

This course leads to a university approved course.

## L2 DESIGN (L2ADS) λ

*This course follows on from L1ART, L1ARD and leads to L3ADS*

This course builds on digital and multi-media skills and techniques that have been developed in Level 1 Art and Level 1 Digital Art. The focus is on Graphic Design, a process of visual communication and problem solving through the use of image, typography and other graphic elements. Students will develop skills in generating artwork through a range of processes and become proficient in digital image-making techniques using Adobe software. Illustration and animation options are also available to students.

Students will select their own theme to guide individual design scenarios and briefs. Students will also look to contemporary designers' ideas to inspire their own artworks.

Teacher in charge - Mrs Liese Strong

**Students in this course will be working towards**

8 credits that are internally assessed and 12 credits that are externally assessed

Course endorsement is possible in L2ADS

0 Credits towards UE literacy (R/W/B)

This course leads to a university approved course.



## L2 PAINTING (L2APA) λ

*This course follows on from L1ART, L1ARD and leads to L3APA*

This course builds on painting and multi-media skills and techniques that have been developed in Level 1 Art and Level 1 Digital Art. Students will select their own theme to guide their portfolio of work throughout the year. A conceptual approach is encouraged to stimulate 'out-of-the-box' thinking and experimental painting approaches. Students will also look to both traditional and contemporary artists' ideas to inspire their own artworks.

Teacher in charge - Mrs Liese Strong

**Students in this course will be working towards**

8 credits that are internally assessed and 12 credits that are externally assessed

Course endorsement is possible in L2APA

0 Credits towards UE literacy (R/W/B)

This course leads to a university approved course.

## L2 PHOTOGRAPHY (L2APH) λ

*This course follows on from L1ART, L1ARD and leads to L3APH*

This course builds on digital and conceptual skills that have been developed in Level 1 Art and Level 1 Digital Art. Students will develop technical skills on how to operate a digital SLR Camera, set-up for photoshoots, operate studio lighting, and refine imagery using post-production techniques in Adobe software. Students will select their own theme to guide their portfolio of work throughout the year. A conceptual approach is encouraged to stimulate 'out-of-the-box' thinking and experimental photography approaches. Students will also look to both traditional and contemporary photographers' ideas to inspire their own artworks.

Teacher in charge - Mrs Liese Strong

**Students in this course will be working towards**

8 credits that are internally assessed and 12 credits that are externally assessed

Course endorsement is possible in L2APH

0 Credits towards UE literacy (R/W/B)

This course leads to a university approved course.

## L2 ART HISTORY (L2AHS)

*This course leads to L3AHS*

Art History is a subject which allows you to understand the essence of society's ideas and priorities through unravelling how this is mirrored in artworks and the lives of artists.

The topic of study for this course is "Towards Modernism" which covers 19<sup>th</sup> Century Art in France. This was a time of dramatic social and political change in world history brought on by the Age of Enlightenment, French Revolutions and the Industrial Age. Art movements from Neo-Classicism to Post Impressionism are studied to unravel artists' ideas and Interpretation of reality in this modern and uncertain age.

Study in Art History is complementary to other subjects such as History and Classics and does not need to be taken in conjunction with Practical Art. It is however a valuable subject for Visual Art students and is especially beneficial to those students interested in studying Art, Design or Architecture at a Tertiary level.

Students choosing this course must show an ability to respond to teacher led research and written tasks in the classroom and the ability to work independently. This course requires strong analytical and literacy skills.

Teacher in charge - Mrs Liese Strong

**Students in this course will be working towards**

12 credits that are internally assessed and 8 credits that are externally assessed

12R, 8B credits to UE literacy (R/W/B)

Course endorsement is possible in L2AHS

This course leads to a university approved course.

### L3 DESIGN (L3ADS) λ

*This course follows on from L2ADS*

This course builds on the technical and conceptual skills developed in Level 2 Design and will further student expertise in this field. At this level, students will be expected to choose their own themes, and study the work of contemporary designers to generate their own unique body of work.

Experimental technical skills with digital media are fostered as students explore a wide range of thematic ideas. Although print-based media is the most common area of study, illustration, animation and moving digital media are additional avenues for exploration linked to this course. Divergent conceptual thinking is encouraged and an eye for detail and precision is essential for success. There is a large external assessment component to this course which will require students to submit three portfolio panels of original work or a moving image portfolio.

This is a valuable subject for those students interested in studying Art, Design or Architecture at a Tertiary level.

Teacher in charge - Mrs Liese Strong

**Students in this course will be working towards**

8 credits that are internally assessed and 14 credits that are externally assessed

Course endorsement is possible in L3ADS

0 Credits towards UE literacy (R/W/B)

This course is university approved.

### L3 PAINTING (L3APA) λ

*This course follows on from L2APA*

This course builds on the technical and conceptual skills developed in Level 2 Painting and will further student expertise in this field. At this level students will be expected to choose their own themes and study the work of contemporary artists to generate their own individual programmes.

Experimental technical skills with wet and dry media are fostered as students explore a wide range of thematic ideas. Divergent conceptual thinking is encouraged and strong drawing skills are essential for success. There is a large external assessment component to this course which will require students to submit three portfolio panels of original work.

This is a valuable subject for those students interested in studying Art, Design or Architecture at a Tertiary level.

Teacher in charge - Mrs Liese Strong

**Students in this course will be working towards**

8 credits that are internally assessed and 14 credits that are externally assessed

Course endorsement is possible in L3APA

0 Credits towards UE literacy

This course is university approved.

### L3 PHOTOGRAPHY (L3APH) λ

*This course follows on from L2APH*

This course builds on the technical and conceptual skills developed in Level 2 Photography and is designed to further students' technical expertise in operating a digital SLR Camera. At this level, students will be expected to choose their own themes and study the work of contemporary photographers to generate their own individual programmes.

Experimental technical skills with both the camera and post-production software are developed as students explore a wide range of thematic ideas. Divergent conceptual thinking is encouraged and is essential for success. There is a large external assessment component to this course which will require students to submit three portfolio panels of original work or a moving image portfolio.

This is a valuable subject for those students interested in studying Art, Design or Architecture at a Tertiary level.

Teacher in charge - Mrs Liese Strong

**Students in this course will be working towards**

8 credits that are internally assessed and 14 credits that are externally assessed

Course endorsement is possible in L3APH

0 Credits towards UE literacy

This course is university approved.

### L3 ART HISTORY (L3AHS)

*This course follows on from L2AHS*

Art History is a subject which allows you to understand the essence of society's ideas and priorities through unravelling how this is mirrored in the lives and artworks of artists.

The topic of study is "Modernism to Post-Modernism". This period takes place in the second half of the 20<sup>th</sup> Century, a time of significant change within the wider world and mirrored within art. Art movements from Realism to Feminism and artist from within both the United States and Aotearoa, New Zealand are studied to unravel artists' reinvention and interpretation of their world in this modern and uncertain age.

Study in Art History is complementary to other subjects such as History and Classics and does not need to be taken in conjunction with Practical Art. It is however a valuable subject for Visual Art students and is especially beneficial to those students interested in studying Art, Design or Architecture at a Tertiary level.

Students choosing this course must show an ability to respond to teacher led research and written tasks in the classroom and the ability to work independently. This course requires strong analytical and literacy skills.

Teacher in charge - Mrs Liese Strong

**Students in this course will be working towards**

12 credits that are internally assessed and 8 credits that are externally assessed

Course endorsement is possible in L3AHS

12R, 8B credits to UE literacy (R/W/B)

This course is university approved.

---

[END OF DOCUMENT – CLICK TO RETURN TO CONTENTS](#)